

CLOCHANDIGHTER

Portlethen's Community Magazine

EDITION 125 – Autumn 2025



Portlethen Gala and the Climbing Wall

Charity No. SC000123



Join us at our Open Events Saturday 13 September Friday 21 November

Register now at www.rgc.aberdeen.sch.uk/beginyourjourney



ROBERT GORDON'S
COLLEGE



Independent co-educational nursery and day school for children aged 3 to 18 years

Editorial

Well, that's the Gala done and dusted for another year. Did you go? Another success for the hard-working Gala Committee. What a fantastic day, and

a good turnout too! Huge thanks to the committee and all the volunteers on the day. If you would like to see something different or would just like to join in the preparation for next year, then look out for the requests for volunteers. Work on next year's Gala will be starting soon!



I never fail to be amazed by the volunteers in our community. Two fine examples (but by no means the only ones) are the Allotment Association with its incredible progress in just a few short months (see pp.24-25), and the Men's Shed with all that it does not just for the wellbeing of its members but also for providing a useful and helpful service to the community (see p.56). Good luck to the latter for its pending Asset Transfer approval this month.

This edition sees something different from the PDCC. It is developing a Local Place Plan and, to this end, pp.73-76 comprise its Community Survey. Please complete the Survey, tear out those 4 pages (2 sheets), pop them in an envelope and put them through the letterbox at the Jubilee Hall. (Alternatively, complete the survey online by scanning the QR code on p.73.) The Survey is anonymous, but responses will help shape the future of Portlethen.

The Portlethen Town Association (PTA) may not have its own article this edition, but it carries on throughout the year, working solidly and quietly behind the scenes, maintaining the Christmas lights and monthly checks on the defibrillators in the town, to name but a couple of things. The PTA held its AGM in June, and the current committee is as follows:

- Chair – Darren Robertson
- Vice Chair – Ken Watson
- Secretary – Mags Fraser
- Treasurer – Alison Duncan
- Clochandighther Editor – Alison Lloyd-Wiggins
- Ordinary members – Kevin Fraser, Roy Kemp, Allyson Michelle Miller, Mandy Ross

The Cloch welcomes requests from local community groups. This, your local community magazine, is free to all; the money raised from advertising covers expenses (not least the printing costs), and anything left over is for the community. Please get in touch if you think we can help your group with a specific purchase.

Lastly, if you're thinking of submitting an article about your club/group/society for the next Cloch, might I just remind you of the importance of including contact details and/or your location? Thank you,

Alison Lloyd-Wiggins - Editor



Email the Clochandighther on clochandighther.editor@gmail.com



CENTRAL HEATING SPECIALISTS

Established in 1982

We have the expertise to ensure that you receive nothing but the best service



- Fully Fitted Bathrooms ~ all trades catered for
- Central Heating Systems
- Boiler Installations with Energy Saving Controls



Reg No 6

For free estimates contact Ian Cruickshank
Tel 07850 780001 Email contact@candn.uk.com



www.candn.uk.com





Kincardine & Deeside Befriending

According to Age Scotland's 2025 national survey of over 50s, 46% say they are lonely all or some of the time. 51% of over 65s in Scotland said they relied on their TV or radio for company.

Pictured, are Fred and Hannah having a fish and chips lunch at Gourdon Harbour. Fred was diagnosed with dementia and was referred to us by his NHS linkworker. He lives very rurally (which he loves), about three miles from the nearest village. His wife is his full-time carer and his contact with other people is limited. Fred has



always been active and participated in many sports so we matched him with Hannah, who loves her tennis. They hit it off instantly and have been out and about visiting various cafes around the south coastal strip. While they are out, this gives Fred's wife some time to herself although to be fair, she generally uses this time in her role as a befriender for a lady nearby!

Do you have some spare time and might like to volunteer with us? We would love to hear from you. It only requires a couple of hours once a week or once a fortnight. We are always on the lookout for volunteers who we try to match locally, so we won't be asking you to travel a long way and we will look after your travel expenses and your snacks. And don't worry if you don't drive – there's always someone who can't get out and about, who just needs a friendly face.

We have befriendees waiting across Kincardine, so if you live in or near Portlethen, Newtonhill, Stonehaven, Inverbervie, Gourdon, St Cyrus, Laurencekirk, Fordoun, Fettercairn (or anywhere in between!), please reach out. It's a great way to get involved in the community and is so rewarding to see a smile on the faces of our befriendees.

If you think that you might have a little free time, and that you might like to brighten up someone's day, please get in touch with us either by email info@kdbefriending.org.uk, or by telephone on 01569 765 714. You can also find us on Facebook and we do have a website for further information and you'll also find an application pack there <https://kdbefriending.org.uk>.

COULL CARS

Hillside, Portlethen

THE LOCAL NAME YOU CAN TRUST

- ✂ MOT's
- ✂ Servicing & Repairs
- ✂ Tyres
- ✂ Brakes, exhausts & clutches
- ✂ Diagnostic equipment



CONTACT US TODAY

☎ Tel: 01224 781888

✉ Email: contact@coullcarsaberdeen.co.uk

FREE COLLECTION FROM THIS AREA

🌐 www.coullcarsaberdeen.co.uk

📘 [Facebook.com/coullcars](https://www.facebook.com/coullcars)

MARK MILNES



Painting and Decorating Services

- ♦ Interior and Exterior
- ♦ Wallpaper Hanging
- ♦ Quality Products with a Quality Finish
- ♦ Professional and Reliable Service



FREE ESTIMATES

FOR COMPETITIVE RATES, PLEASE CALL

07793 677908

Email: mark.milnes@hotmail.co.uk



ROTWISE®

- **Woodworm • Dry & Wet Rot • Damp Control**
- **Water / Flood Damage • Insurance Work**
- **Cornice Work • Plastering**
- **30 Year Guarantee**

Local family owned company specialising in timber preservation and dampness control.

Call or email to organise your free survey.

• 01224 211999 • info@rotwise.com

35 York Place, Aberdeen, AB11 5FW



Our services are available to anyone age 60 or over or living with a disability or long term health problem

Small Repairs/Handyman Service

Do you have a small plumbing, joinery or electrical job that needs attention? Or a small indoor or outdoor task that you need help with? Our inhouse tradesman can help. No job is too small

Give our team a call and an appointment can be arranged to suit.

Minor Aids/Adaptations Service

Would you benefit from a handrail at external steps or a door entrance. We can supply and fit modular handrails - contact us for further information and a member of our team can arrange to visit you and supply an estimate

CONTACT US TO FIND OUT MORE
01224 625822 OPT 1

www.aberdeencareandrepair.co.uk

Portlethen A2B dial-a-bus

The service operates weekly with an Aberdeenshire Council wheelchair-accessible minibus

Wednesdays: 9.45 – 14.30 hrs

The A2B service is open to:-

- People who have difficulty walking
- People with other disabilities
- Residents who don't live near a bus stop or bus route.



If you think you need door-to-door transport you may qualify. We can take you anywhere within Portlethen e.g. shopping, medical centre, the library or to connect onto another bus service. You can ask for a trip at any time between 9.45 and 14.30 hrs, but you will need to fit in with other passengers. Phone us to find out more about the service.

All passengers have to be registered as an A2B member.

All trips must be pre-booked. Bookings can be made up to 7 days in advance, or up to 14 days for a medical appointment.

Call us on the A2B hotline number **01467 535 333**. Choose **option 1** for bookings, **option 2** for cancellations, **option 3** for general enquiries.



a mark of respect

MARK SHAW


FUNERAL SERVICES

“ A funeral is not a day in a lifetime, but a lifetime in a day ”

347 George Street
Aberdeen, AB25 1EQ
Tel: 01224 640008

26 Abbotswell Crescent
Kincorth, Aberdeen, AB12 5JW
Tel: 01224 876000

Email: care@shawfunerals.co.uk
www.shawfunerals.co.uk











NATURAL DOG TREATS

BAILEY'S BITES

PICK N MIX SUBSCRIPTION BOXES TREAT BOXES ONLINE AND CUSTOM ORDERS



WWW.BAILEYS-BITES.CO.UK
 F: @BAILEYSBITESABERDEEN
 I: @BAILEYSBITESABZ
 MANDY@BAILEYS-BITES.CO.UK
 07795113655
 PORTLETHEN, ABERDEENSHIRE





ELECTRICAL SERVICES

Expert Electrical Solutions for Your Home and Business!

OUR SERVICES:

- ✓ Indoor & Outdoor Lighting
- ✓ Rewiring & General Repairs
- ✓ Fuse Board Upgrades
- ✓ Sockets & Switches



CONTACT US ☎ 07843 236630 🌐 www.skelectricaltd.com

Inspiring Aberdeenshire 2025 finalists

Community Spirit Award

Darren Robertson (Portlethen)



In lieu of the usual article from Portlethen Town Association (PTA), I wanted to use the space to recognise one of our own, Darren Robertson. Darren has his finger in so many Portlethen pies, but not, I hasten to add, those that he sells at Portlethen's Place to Eat!

Darren has been nominated for the Inspiring Aberdeenshire Community Spirit Award 2025, and, in the footsteps of our very own Julie Hay (Fine Piece Café) and Morag Kennedy (Youth Club) in 2024, has reached the final this year! Of course, this is an achievement in its own right – for all of them – and I congratulate them for it. This year, the winners for each category will be announced at the Inspired Aberdeenshire event in September. Good luck, Darren!

This is what the Inspiring Aberdeenshire website has to say about Darren:

Darren is chairman of the Portlethen Town Association and the Portlethen Gala. These groups provide the Christmas tree, Christmas lights and the Gala. He is also on the committee for the Portlethen Jubilee Hall. Since he joined the Jubilee Hall committee, the hall has been transformed - in no small part - thanks to Darren, who arranged for all the new chairs and tables as well as the decoration of the space itself.

He organises the yearly Santa Run which brings smiles to the faces of residents as Santa goes around the streets, and he arranged for defibrillators to be installed around the town.

Portlethen is very lucky to have Darren as a resident, and this nomination is a way for the community to say thank you.

After last year's winners were announced, Provost Judy Whyte had this to say:

"Inspiring Aberdeenshire never fails to amaze me, because each year it reminds me of the need to reflect on how astonishing our communities are. This is the aim of Inspiring, to showcase the work of people in our communities."

Alison Lloyd-Wiggins

Clochandighter Accounts

Transactions in the quarter to 31st July 2025

	Credit	Debit	Balance
Balance b/fwd			£10,075.49
Advertisers	4825.00		£14,900.49
Winter & Simpson Printers		-3,433.00	£11,467.49
Sale of equipment	540.00		12,007.49
Postage and envelopes		-42.00	£11,965.49
Bank Charges		-12.75	£11,952.74
Litter pickers		-39.90	£11,912.84
Cloch deliverers' Thank You @ Golf Club		-240.00	£11,672.84
Scotia Seeds		-120.42	£11,552.42
Christmas lights refurb		-836.46	£10,715.96

SOUNDS BURRILIENT



AV INSTALLATIONS

SATELLITE & AERIAL; Installations /Service calls
FLAT SCREEN TELEVISION ; Installations & Wall mounting
HOME CINEMA SYSTEMS, Designed, supplied & installed
CCTV SYSTEMS ; Designed, Installed & Maintained
AUTHORIZED DEALER : Sonos, Monitor Audio, Sonance ,etc.
 & More

Domestic and commercial work



Tel :07762069425

E-mail: info@soundsburrilient.co.uk

WEB : www.soundsburrilient.co.uk

www.facebook.com/soundsburrilient.homecinema



Mearns FM **Your Community, Your Voice**

There's something fresh in the airwaves this autumn – Mearns FM has officially launched DAB! That's right – your trusted local voice is now broadcasting across Aberdeen and surrounding areas via **Digital Audio Broadcasting**, as well as on **FM 105–107** and various streaming online including via **RadioPlayer**, **Radio Garden**, and smart speakers.

Having previously tested the benefits of DAB for community radio, this is a huge leap forward for us, and for you – our listeners, local champions, and community stars. We're louder, clearer, and more accessible than ever before. Whether you're in Newmachar, Portlethen, Westhill, Stonehaven, Bridge of Don, Laurencekirk or tuning in from a tractor in the middle of the Mearns – we're with you.

Community radio is more than just music and chat – it's a powerful platform rooted in the heart of the people it serves. At Mearns FM, we believe in broadcasting with purpose – delivering local news, championing community voices, and shining a spotlight on what matters most to our towns and villages. We're not a faceless network – we're your neighbours, your friends, and your fellow residents, connecting people across Aberdeen and the Mearns.

We actively encourage our communities to engage with us! Whether it's showcasing community issues, launching local projects, celebrating achievements, or promoting events, Mearns FM is the perfect platform to reach a broad local audience. We regularly conduct interviews with local businesses, charities, and community groups. From one-off radio features to weekly slots, we're keen to hear from local musicians and creatives, grassroots charities, or even the unsung heroes making a difference behind the scenes.

One of our 'champion' abilities is to provide a professional live sound service for public events of all kinds — whether it's a festival, gala, sporting event, or fireworks display. From public announcements to live or recorded music, indoors or outdoors, we've got you covered. You can take the mic yourself or let one of our experienced radio presenters handle announcements and commentary to keep your audience engaged. Whether you need background music throughout the day, backing tracks for performers, or full-stage sound support for a live band, we'll make sure your event sounds great. Also an important income generator for sustaining Mearns FM. We are open for event bookings for the remainder of the year, and able to take bookings for 2026 - Contact us via email: events@mearnsfm.org.uk

We are currently researching a 'Student Sound-Off' initiative. The concept to provide a platform for young voices. From DJ slots to a 'Student Voice of the Month' competition, we want to hear what the next generation has to say. It's all about inclusion, creativity, and confidence. We would love to hear from students and their thoughts on this - email: secretary@mearnsfm.org.uk

For local businesses, Mearns FM offers unbeatable reach right into the homes of your customers. Our advertising, sponsorship, and advertorial rates are the most competitive in the North East – we collaborate with you to ensure mutual benefit. We're also available to profile your business through interviews and feature segments. Just let us know your needs and we'll help you make it happen. Remember, we release special Christmas advertising bundles! Contact us – email: sales@mearnsfm.org.uk

It's our privilege to host and support community events all year round. This autumn, we're especially excited about our upcoming appearances at the Stonehaven Open Air Pool with their monthly midnight discos, Stonehaven Bonfire Festival, local galas, school events, and one of our most popular themes – the Disco Night! Join us in Inverbervie on 25th October for our 80s & 90s Disco Evening, preceded by children's discos earlier in the day. These aren't just fun nights out – they're vital fundraising opportunities to help keep Mearns FM on the air and growing.

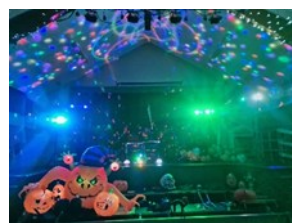


Mearns FM is proudly operated by a dedicated pool of 25 presenters – all of whom volunteer their time and talents. Every donation, no matter how small, directly helps sustain our operations and enables us to do more in the community. We are always grateful for public support – it's what keeps our mics on and our message strong.

Mearns FM AGM is on Sunday 5th October 2025 in Stonehaven Legion, upstairs function room at 19:30 (7.30pm) and open to anyone who wishes to attend. Please confirm your attendance to: secretary@mearnsfm.org.uk

- * To donate, please request a payment link: secretary@mearnsfm.org.uk
- * Community events and discos: events@mearnsfm.org.uk
- * Community engagement & initiatives: secretary@mearnsfm.org.uk
- * Local artists & creatives: studio@mearnsfm.org.uk
- * Interested in presenting/DJing? Contact: volunteers@mearnsfm.org.uk
- * Advertising & sponsorship: sales@mearnsfm.org.uk

Maxine Smith,
Mearns FM Secretary to the Board
secretary@mearnsfm.org.uk



Portlethen Moss Conservation Group

Registered Scottish Charity No - SC040350



Our Group's Projects - Portlethen Moss, Portlethen Community Woodland, & Community Wildlife & Sensory Garden

Portlethen Moss – Local Nature Conservation Site (LNCS)

We were very saddened that the Moss was set on fire twice earlier this year by local youths. It's unthinkable the impact it would have had on wildlife, in particular nesting birds. The fires spread quickly due to the dry weather and came very close to nearby housing. Thanks to residents who alerted the emergency services and to the emergency services for their quick response. Nature is very resilient; it has to be, and already we're seeing regrowth in the barren burned out areas that were once rich with vegetation. While the moss is designated as a Local Nature Conservation Site, the area near housing is in private ownership – once thought suitable for further development, so we are very restricted in what we can do to manage that part of the Moss.

Community Woodland

The Woodland was used again this year as the venue for the Portlethen Run4Fun; it's great that the Woodland is being used for so many different activities. We continue to cut the grass paths in the orchard and maintain the hedgerow, fruit trees and bushes. Sadly, there's been a 'mysterious grass cutter' who cut all the grass in the orchard including our areas of wildflower planting. We know it wasn't Landscape Services, and the mystery continues, we will be putting a sign up to stop any further 'unauthorised cutting'. During the growing season, we cut only the grass paths, allowing wildflower and areas of long grass to grow to help pollinators, who in turn pollinate the orchard. Then in late autumn once the wildflowers have set seed, we cut everything down.

Community Wildlife & Sensory Garden

The garden is now entering into its second year and is slowly maturing. Earlier this year we added a new sensory lavender border, thanks to funding from NESCAN. It's doing really well and, at time of writing (early /July), it's already flowering and, being a drought-tolerant plant, it's coping very well with the dry hot weather we're having.

Our Kincardine & Mearns Ranger organized a 'Pollinators Portrait' event to mark the first year of the garden opening on Thursday 7 August.

If you wish to know more about the group, or if you want to become a member (new members are always very welcome) please do not hesitate to contact us through our Facebook page or at one of our events.

Being a group member is neither onerous nor time consuming, we have 'hands on' events throughout the year that everyone is welcome to take part in. It's very rewarding, you can see the results of the work we do, and you know that you're doing something really positive for our local environment.

<https://www.facebook.com/portlethenmoss>
<https://www.facebook.com/PortlethenWoodland>

Please help us raise funds for these community projects each time you shop online, at no cost to you whatsoever, you'll be amazed at how many businesses support this - even Domino's Pizza

<http://www.easyfundraising.org.uk/causes/portlethenmossconservationgroup>



How much do you know about Hinduism?

Tucked away in the historic Bucksburn Old Stoneywood Church, the **Aberdeen Hindu Temple** is a vibrant spiritual and cultural sanctuary, the only Hindu temple of its kind in the North-East of Scotland. While many pass by without knowing what lies inside, this beautiful building is now home to ancient traditions, community spirit, and the gentle hum of Sanskrit chants.

The temple is run by a registered charity, Aberdeen Hindu Temple Trust (AHTT), and is entirely led by volunteers. AHTT serves not only the Hindu community but also warmly welcomes anyone curious about Indian culture, philosophy, or spiritual practice. From children learning their first devotional songs to families celebrating together, the temple fosters connection and compassion.

What makes the Aberdeen temple truly special is its authenticity. We are proud to host traditional Vedic rituals, including Abhishekam (ceremonial bathing of the deities), archana (personal prayers), and other pujas (involving offering of flowers and chanting) performed with precision and devotion by trained priests.

In a fast-moving world, the temple offers a place of stillness, where ancient wisdom meets modern community spirit. Whether you are looking to learn, reflect, or simply sit in peace, you will find a warm welcome here. The temple also actively engages with the wider community by hosting events such as the Consulate General of India camp for consular services, interfaith dialogues, and summer camps for children to explore culture and values.

We encourage you to look at the website for the Aberdeen Hindu Temple for details of our classes, events and videos of rituals. We hope you will visit soon!

<https://aberdeenhindutemple.org.uk/>

Himanshu Srivastava

Himanshu is a senior IT consultant and volunteers at AHTT. He also spreads knowledge about Hinduism at Scottish schools.

Helping Our Endangered Hedgehogs

www.facebook.com/HedgehogsofPortlethen

British hedgehogs have declined by between 30-75% in rural areas since 2000.

By August, many hoglets will be independent of their mothers; once they leave the nest at around 8 weeks of age they go on to live solitary lives. At this time, young hedgehogs can struggle to find enough water and food to eat and you may find them wandering out during the day; it's best to call a rescue for advice as being so small and inexperienced they're very vulnerable to predation out in the day.

You can help them to thrive and remain nocturnally active by providing a shallow bowl of water and one of dry kitten food, every night – dry food is better in summer as it doesn't go off. If you hear a hoglet peeping like a little bird with no sign of its mother, it needs rescuing ASAP – never try to care for one yourself it WILL DIE.

Mothers will often go on to have a second litter late in autumn, the hoglets from these litters are on a race against time to gain enough weight to support them over winter and hibernation. Again, with your help in your gardens, providing a bowl and water and one of dry kitten food our endangered population of hedgehogs will remain healthy.

We're very lucky in Portlethen to have hedgehogs living all over our small town. Simple steps to help them, such as making sure there's a small space where they can enter and exit your garden, allowing them to roam freely away from roads. Remember they really are the gardener's friend, they will eat all the bugs that like to eat your plants.



Very important - I reiterate, please provide a shallow bowl of water, if it's the only thing you can do: if there's no puddles then there's no water for hedgehogs. So many die because they simply can't find water, it's such an avoidable waste of a precious life for the UK's favourite mammal which is at risk of extinction.

As always a hedgehog out in the day is not ok so if you see one, no matter how well it may look, 99.9% of the time it's a very poorly hedgehog and needs containing in a high sided box while you call **The New Arc** for advice tel: **01358 701723**.

Check out the Hedgehogs of Portlethen & Surrounding Area Facebook page where there's lots of information, use the search tab to look for information and if you don't find the answer, you need send a message directly.

We are not a rescue, but can advise on how to help hedgehogs.

THE LEATHAN

LOCAL COMMUNITY PUB
Always a Warm Welcome



Sky Sports, BT Sports, Premier
Sports, Pool, Darts, Live Music,
Discos & Dog friendly

Fresh, Homemade food served
every Thursday - Sunday,
12:30pm till 7:45pm
Takeaways available



Our Lounge is Available For Private
Hires and Funeral Teas. To Make a
Booking, Call us on 01224 784423



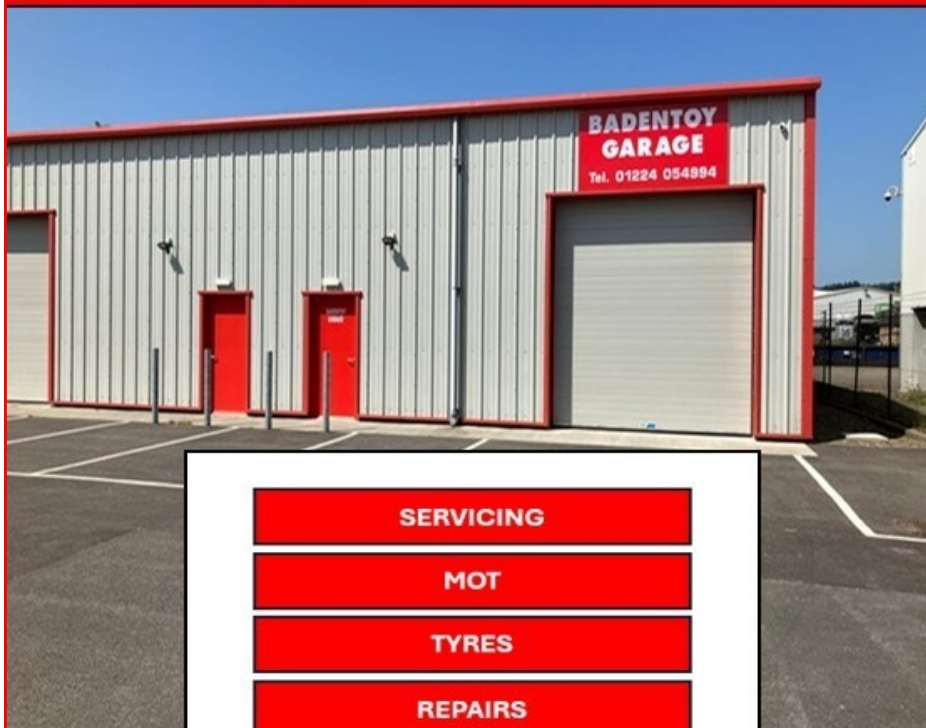
The Leathan, Cookston Road, Portlethen, AB12 4PT

Badentoy Garage

Phone: 01224 054994

Web: <https://badentoygarage.co.uk>

Mail: info@badentoygarage.co.uk



SERVICING

MOT

TYRES

REPAIRS

DIAGNOSTICS

**Address: Unit 4, Saltire Business Park, Badentoy Avenue,
Portlethen, AB12 4YB**



Tel: 01224 950925
Mob: 07432 272893
Smilne.slating@gmail.com

For all your roofing needs look no further than
S Milne Slating Services.

We carry out the following works:

- Slating, tiling works.
- Gutter cleaning, repairs and renewals.
- Harling/Roughcasting all cement works.
- Felt flat roof renewals and repairs.

Free estimates available. Emergency call out service.
All of our works are guaranteed.



C.M Portlethen Handyman

- Grass Cutting
- Gardening & Landscaping
- Decking
- Fencing
- Sheds
- Fence, shed, decking, soffit
Painting
- Driveway Cleaning
- Plus much more
- **Free Estimates**



Craig Murdoch
Bramble Place
Portlethen
Aberdeenshire
AB12 4UG

Tel: (01224) 360005
Mobile: 07756 758921

PD PRESTIGE PD DECORATORS

Domestic & Commercial Painters & Decorators

07763 675122

info@prestigedecorators.com

www.prestigedecorators.com

Mains of Portlethen Farm, Portlethen, Aberdeen, AB12 4QP

- Excellent customer service
- Professional approach
- Quality workmanship
- Quality materials sourced
- Competitive prices
- Friendly team
- No job too small
- Fully insured
- All works guaranteed for 12 months

'where price and quality meet'

Please get in touch for a free no obligation quotation



GROUNDWATER
ARCHITECTURAL DESIGN

We have over 30 years' experience working with individual and corporate clients on a number of small, medium and large architectural projects throughout the northeast

- Free initial consultation • Full design service •
Building consents obtained •
Extensions and alterations • Conversions • New builds

Tel: 01224 782035 Mob: 07783148045

Email: info@groundwaterdesign.co.uk

www.groundwaterdesign.co.uk



www.ct-garageservices.uk

**Book Your
Vehicle in Today**
07377 442829

GARAGE SERVICES

VEHICLE MAINTENANCE & REPAIR

Servicing &
Repairs
MOT's

Brakes
Exhausts
Tyres

Clutches
Batteries
Diagnostics

0% FINANCE ON ALL SERVICES

Spread the cost over 4 months
No credit checks
All customers 100% guaranteed

CALL TO BOOK
07377 442829

CT GARAGE SERVICES
MARYWELL COMMERCIAL PARK
UNIT 5, BAY 2, AB12 4SB

OPENING HOURS
08.00 - 17.00 (MON-SAT)

✉ contact@ct-garageservices.uk 🏠 www.ct-garageservices.uk

PORTLETHEN'S PLACE TO EAT

BREAKFAST - 8 Items **£6.50**

Bacon, Sausage, Tomato
Egg, Black Pudding,
Hash Brown
Potato Scone & Beans.

HOT FILLED ROLLS

Bacon £3.20
Sausage £3.20
Lorne £3.20
Egg £2.80
Black Pudding £3.20
Extra Item 80p



CHIPS

Chips £2.80
Chips & Cheese £3.60
Chips & Gravy £3.40
Chips & Curry Sauce £3.40
Chips Cheese & Gravy £4.20
Chips Cheese & Curry Sauce £4.20

COLD FILLED ROLLS

BLT £3.20
Cheese £3.00
Ham £3.00

BURGERS

1/4lb Beef Burger £3.80
1/4 Cheeseburger £4.20
Bacon Burger £4.40
Bacon Cheeseburger £4.60
Chicken burger £4.20
Veggie Burger £3.20
Hot Dog £3.50
Extra Burger £1.60

EXTRAS

Sofie 60p
Chilli Mince £1.60
Cheese (slice) 60p
Soup £1.60

DRINKS

Tea £1.20
Coffee £1.40
Hot Chocolate £1.50
Decaff Tea/Coffee £1.50
Cans £1.20
Flavoured Water £1.00
Water £1.00
Cartons 80p

SWEET TREATS

Sweet Treats 80p
Cakes (as priced)
Crisps 80p

Portlethen's Place to Eat - Retail Park, Muirend Road, AB12 4XP
Open Tuesday to Saturday 9.00am - 3.00pm (Closed on Sunday)
Phone orders welcome Call: 07583 703105 (Please allow at least 20 Minutes for your order).



Rapid Roof Repairs & Property Maintenance

t:07731962456



**67 Bruntland Court,
Portlethen,
Aberdeen,
AB124UQ**

t :07731962456

t: 01224784743

local tradesman with 30 years experience

**Slating, Tiling, Repointing, Flat roofs,
Guttering, Velux windows, UVPC cleaning,
Chimney repairs, Harling, Roof cleaning,
Grass Cutting and garden maintenance,
Fencing, Power washing and Painting**



**SPECIALISING IN BATH & SHOWER ROOMS
IN AND AROUND ABERDEEN FOR THE LAST 20 YEARS
I PROVIDE MY OWN TEAM OF TRADESMEN
WITH EXCEPTIONAL SKILLS & HIGH STANDARDS
TO DELIVER ONLY THE BEST WORK POSSIBLE.**

LOCAL, PROFESSIONAL & RELIABLE

**JOHN S THOMSON
TEL: 07825917605**





Portlethen & District Community Allotment Association

<https://www.facebook.com/groups/PDCAA/>

The progress picture

Welcome to our latest update on the progress of our allotments at Hillside for September 2025.

Over the past few months, much has happened, and on 15th March, we opened our site to allow the members to begin their individual plot development, ranging from 25, 50 up to 100sq mtrs, and we have over 45 individual growing spaces with an active waiting list.



As you can see a sample of the work completed since accessing the site with a multitude of planting and landscaping has been achieved, and harvesting is taking place. The members are to be congratulated.

We currently have 389 members, who support our work in the development of our local project for the benefit of the Portlethen community.

The committee is currently in the process of becoming a charity, with all necessary paperwork with OSCR, giving us the potential to access additional (new) funding streams

A few adopted a no-dig section, but many chose raised beds to cultivate a variety of edible plants and produce, including filling our raised beds in the Polycrub with tomatoes, cucumbers and staging full of propagated seedlings for planting out.

The site has been transformed to what you will see in the photo and is a credit to those who, from a grassy wet start worked extremely hard to get to this point so quickly.

There has been great involvement from the four local schools, in establishing their own piece of ground, producing tatties, peas, beetroot, salad leaves, pumpkins, onions, radish, and sunflowers for which we can harvest the seeds next year. All students from the schools were keen participants and not one reneged on the tasks in hand and in fact kept asking for more to do. A magnificent work ethic from them. I thank all the staff that encouraged and supported their own students to participate.

Oh! the wheelbarrow ride may have influenced both students and staff!

We also had the local youth club come and participate with a long pumpkin bed or raising funds, we supported the Newtonhill cubs' plant sale and Lairhillock school with a variety of plants as part of their curriculum, and attended the Hillside School Summer Fayre where we raised just over £50 towards our funds.

The site perimeter fence has been surrounded with beech hedging to three sides to create future wind breaks and populated with over two hundred native trees at the front carpark entrance. We have also planted plums, pears and apple trees along the front of the MUGA gifted by Aberdeenshire council. This has been duplicated within our designated orchard area with sixteen native orchard trees from funds donated by Kenny Lorimer in memory of his late wife Christine.

Thank you for the continued support from local business for topsoil (A&M Smith) and compost (ABK aggregates) and funding from Asda and Co-op. The securing of ongoing finance is a constant undertaking by our resolute member Colin Pike. We thank you very much Colin.

- Native tree (young saplings) donations from Ewan Cameron have been placed in our nursery beds meantime, to be planted out later this year.
- As part of their 25th anniversary celebrations, the Happy Plant in Mintlaw awarded us a £500 voucher which will be put to effective use.
- We are continually trying to secure funds for infrastructure projects, but specifically for compost toilets for our schools and members to be able to use, and additional troughs to enable us to recycle water from our polycrub roof.
- There's ongoing dialogue with Scottish Water regarding securing a permanent water supply (standpipe) inside our fenced area; this has not been forthcoming so far, but we continue to engage with them for a resolution as soon as possible.
- From recent correspondence from the Property Department, the lease from the Council is in the final stages of being drawn up; we have asked for sight of the draught copy prior to passing it on to our legal team.

If your company would like to support a great community project, please contact our Chair, Cameron Deans on pdcaachair@outlook.com. I am available (Martin Dear martindear57@gmail.com) to come and talk to any workplace or group, to clarify our objectives, or indeed answer any questions you may have about supporting this community project. By supporting us, you could also be positively supporting the wellbeing of your employees, as well as the children and adults who live within the community. With your help we can benefit the community in which we work and live. Thank you.

Martin Dear, Liaison member, On behalf of the Allotment Committee

Appeal to Local Landowners: Help Us Build a Home for Community Football in Portlethen

Portlethen Sports Club, proudly serving our community since 1991, is seeking the support of local landowners who may be willing to lease, gift, or sell a plot of land suitable for the development of community football pitches.

Portlethen Sports Club currently has approximately 270 players representing them, ranging from 5 to 18 years of age.

At the moment, the club must compete with other local sports groups, including adult teams, for access to council run facilities, which are not always available or in suitable condition. We also have access to grass areas on local public parks, but again these are not always available when required, or in the best condition to use. Often these areas are heavily littered or damaged, coaching staff often find themselves removing glass from the playing surfaces to make them safe to play on.

Incumbent club chairman Daniel Skene commented: "As our club continues to grow, so does the need for accessible, high-quality facilities where children, young people, and adults can come together to play, train, and thrive. We are currently exploring the possibility of expanding the club to include a dedicated girls team(s), as well as potentially adding a walking football group to the offering. Without the appropriate resources in place, these will remain a pipe dream. A dedicated space for football would not only support our teams but also promote health, inclusion, and community spirit across Portlethen and the surrounding area."



Councillor Catherine Victor added: "Since my election in 2022, to be one of Ward 17 Councillors, I was astonished to discover that Portlethen, a town of 9000+ residents and growing, did not have a football pitch or changing facilities/sports pavilion for the community to freely access. Practically every other town/village in Aberdeenshire, have all these facilities in place, some with more than one. Portlethen is a growing and thriving community, and deserves somewhere for our football club to call home. When I raise the issue, the answer I get is 'there is no available suitable land'. Please, if you can help our very successful sports club find ground for pitches and a pavilion, that we can develop into a long-term home for all our gifted players, do get in touch either with the club or with myself. We need your help!"

If you or someone you know might be able to help, please get in touch. Together, we can create a lasting legacy for generations to come.

Contact: <mailto:mcllr.c.victor@aberdeenshire.gov.uk>

House of Salvation Church, Portlethen.
Scottish Charity No: SC045795

From joyful moments at our vibrant Fun Factory events designed for children aged 5-11 in our community, to heartfelt visits to Lethen Park Care Home, House of Salvation Church, Portlethen continue to nurture connection, care, and celebration in our community.

This August brings our Youth Hangout, which is open to the wider community.

We invite you to an uplifting musical evening on Friday September 12th at Portlethen Academy. It's open to all!



We meet for service **every Sunday at 11am**
at Portlethen Academy. Come and be part of it!

Contact - Joy on 07877 103721

Email – pastor@houseofsalvation.org.uk

HS IT and Networks

IT Specialist

Specialising in PC, Laptops, Servers, Cisco & HP Networking Gear.

- Computers & laptop rebuild including migration to Windows 11
- Windows 10 to Windows 11 migration with no data loss
- Linux, Windows 11, Virtualisation and Servers installation & troubleshooting
- Forensics grade software based Data Recovery
- Network and Cyber Security for home and offices
- Virus, ad-ware, spyware, hack ware, hijack ware, malware removal
- Wireless Surveys, and WiFi signal improvement
- Installation & upgrades of Routers, switches, Firewalls
- Remote/TeamViewer based support available
- Site call-outs, and out of hours service available *



For consultation please email **Himanshu Srivastava BSc (Hons)** at **admin@hsnetworks.co.uk** with cc to: **yeshu26@gmail.com** or phone **0784 7469133**

<https://www.facebook.com/HSITNETWORKS>

Linkedin profile: <https://www.linkedin.com/in/himanshusrivastavaengineer>

* As per availability



Apex Accountancy Solutions Ltd



Bookkeeping / Tax Returns

Payroll

Onsite Support

Payroll Process Improvement

Rosalind Brown
Portlethen | Aberdeenshire

Tel: 07976008798
Email: solutions@apexpayb.co.uk
Web: apexpayrollandbookkeeping.co.uk
FB: [ApexAccountancySolutionsLtd](https://www.facebook.com/ApexAccountancySolutionsLtd)

SCO-DEC

PROFESSIONAL PAINTING DECORATING AND
PROPERTY CARE SERVICES

Free Quotes and Advice

DAVID SCORGIE Tel. 07710796514

You have reached your destination.

Affordable luxury
motorhome hire.



JRK Motorhomes
Freedom to Roam

Find out more by calling
07501 917614

or visit our website at
www.jrkmotorhomes.co.uk

C.M Portlethen Sheds

- Custom Sheds
- Made to customer sizes
- Erecting of pre bought sheds
- Re felting of shed roofs
- Painting and repairs



Craig Murdoch
Bramble Place
Portlethen
Aberdeenshire
AB12 4UG

Tel: (01224) 360005
Mobile: 07756 758921



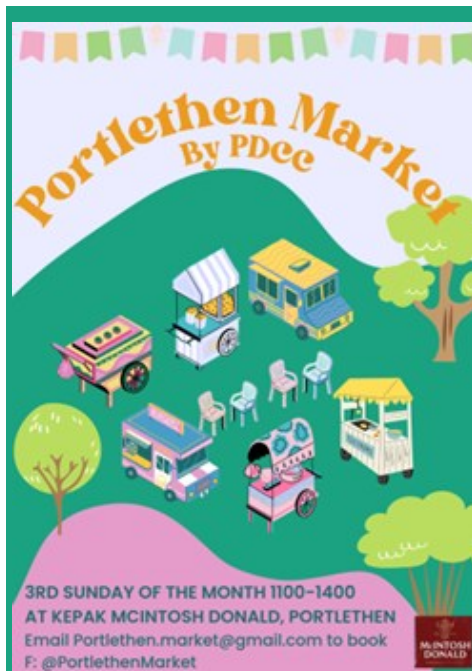
SMART BLINDS

Aberdeen & Aberdeenshire's
Number 1 Family Blind Company

We are a local family business based in
Cove with 18 years
experience, measuring,
manufacturing and fitting high
quality blinds at competitive prices.
We promise to beat any like for like
quote.

Call **01224 891177**

smartblindsabdn@gmail.com
www.aberdeensmartblinds.co.uk



Portlethen Market By PDce

3RD SUNDAY OF THE MONTH 1100-1400
AT KEPAK MCINTOSH DONALD, PORTLETHEN
Email Portlethen.market@gmail.com to book
F: @PortlethenMarket



A2D Garden Services

Professional, reliable and friendly service.
Grass cutting, hedge trimming, planting
and general garden maintenance.

Andrew Duncan, *HND Horticulture*
Based in Findon S.E.P.A. Registered
Contact for a free quote
Tel 07500 558158
E.mail a2dardens@aiduncan.plus.com




Michael Morton Painting & Decorating Services

All aspects of internal and external decoration undertaken
Ames taping - Wallpapering
Local references available on request
30 years experience in the trade
Please call Mike for your friendly no obligation quote





balfour+manson
Legal excellence. Caring people.

Your local solicitors

Balfour+Manson provides a full range of services for all your legal requirements, including:

- Wills, Powers of Attorney, Trusts, Tax
- Residential property work and estate agency
- Family law
- Personal injury and medical negligence claims
- Employment law
- Resolving disputes



Amy McKay
Partner
01224 498076
amy.mckay@balfour-manson.co.uk

Accredited by The Society of Trust and Estate Practitioners (STEP)



Greg Lawson
Partner
01224 472999
greg.lawson@balfour-manson.co.uk

Accredited by The Society of Trust and Estate Practitioners (STEP)

11 The Green, Berrymuir Road
Portlethen AB12 4UN

Tel: 01224 784855
info@balfour-manson.co.uk

www.balfour-manson.co.uk





MOT SERVICING REPAIRS TYRES & MORE

ABZ AUTOWORKS
CENTRE

Local Auto repair and servicing centre
offering Affordable, Reliable solutions for
your vehicle or fleet

- MOT (Class 4 & 7)
- MOT REPAIRS
- SERVICING
- BATTERIES
- EXHAUSTS
- TYRES
- ELECTRICAL FAULTS
- DIAGNOSTICS

OPEN 6 DAYS A WEEK

www.abzautoworks.co.uk



01224

084459



FIND US AT:

ABZ Autoworks Centre
Unit 1 Barclayhill Place
Portlethen
Aberdeen
AB12 4PF



eb-architect.com



Architects
Registration
Board



THE ROYAL INCORPORATION OF ARCHITECTS IN SCOTLAND
CHARTERED PRACTICE

eb-architect ltd

Chartered Architect

Alterations | Extensions
Conversions | New Builds

Measured Surveys | Outline Proposals
Planning + Building Warrant Applications
Construction + Tender Packages
3-D Renders | Space planning
Contract Management

01224 969600

Office 10,
Badentoy Business Centre
Portlethen



Local Blind Company

All types of Blinds and Shutters supplied and fitted.

Free Estimates and fitting!

Call Richard on 07834611660

Customblindsaberdeen@gmail.com



In the last few months, we have completed all our youth projects with great success.

PSQ (Primary Schools Quiz): Our winning team from Fishermoss School went forward to the area round and despite not reaching the District Final they enjoyed the experience of being in the Beach Ballroom, supported by their teachers and our members. The District Round, comprising teams representing clubs throughout the North of Scotland and also held in the Beach Ballroom in June, was also well supported by our youth leaders.

Youth Competitions: Awards were presented to the winners of our annual youth competitions, with Young Musician and Young Chef being presented at the Academy awards evening and Young Writer in school.

RYLA (Rotary Youth Leadership Awards): RYLA is a Rotary leadership development course. It is open to young people who are 16 or 17 and takes place at Abernethy Outdoor Centre in Nethybridge in July. We shared the cost with another club this year and interviewed 3 applicants for the place, selecting Maya. An extra place became available, and our reserve Lauren was delighted to accept. What a wonderful week Maya and Lauren had, the weather was kind, and we look forward to hearing more about their week when they present to us as a club after the summer break. We can always see the change in confidence when our candidates return, such a worthwhile experience.

Community: Members have been out and about at local fairs, having had a presence at Cove Gala and the Skateraw Fair. At time of writing, we are looking forward to attending Portlethen Gala with our ball pool and the Scoop a Duck game for the children - and adult kids too!

International: We continue to support our school project in Bubaare, Uganda. We're planning our Autumn and winter programme and would be delighted to welcome new members.

Rotary International's 'Service Above Self' motto reminds us to carry out humanitarian service; we'd really like to do more in our area but are hampered by a lack of like-minded people. We have the skills, just not enough bodies. If you would like to find out more, please contact us on:

Email: acm739@btinternet.com or message via our Facebook page, Portlethen and District Rotary.

Portlethen Bowling Club



The club Summer Fayre was held on Saturday, 26th July. It was a very successful event with over 300 people through the gates.

We are extremely grateful to all who gave up their time to support our local club.

To all stall holders, a very big thank you for once again turning up and I hope you all had a good day.

Thanks to Keith Brown for organising the event and to all the members of the club who gave their time to run games on the green, the BBQ, bar and stalls. Without their continued support, the day would not be successful.

Thanks also go to our three new sponsors, Lethen Motors, Vehicle Solutions Aftersales, and Cordiners Sawmills; also to Asda, Warburtons, and McIntosh Donald for their support and kind donations towards our BBQ for the Fayre.

From a bowling point of view, we are coming close to finals time in all competitions. I wish all the semi-finalists and finalists all the best in the competitions and look forward to watching some exciting games.

For anyone wishing to try bowling as a sporting activity, we run beginner classes on a Tuesday evening at 6.30pm. If you are interested, then come along; everyone is welcome no matter what age.

Walter McMillan,
President





Kincardine Coastal

Kincardine Coastal Church of Scotland



Portlethen



Newtonhill

Services

Kincardine Coastal Church looks forward to welcoming both old and new friends of all ages.

Sunday Morning Service in Newtonhill is at **9:30 am**, with a later service in **Portlethen** beginning at **11:00 am**.

Soupa Tuesday Lunches

These enjoyable events continue to be offered in Newtonhill Church on the first Tuesday of every month, beginning on 2nd September. Everyone is very welcome to join us in the church. **£6 for soup, sweet & coffee**

Car Wash

We provide a washing service in the car park at Newtonhill Church on the first Saturday of each month through to November.

Fairtrade Fortnight - 22nd September – 5th October 2025

A breakfast service on 31st August at Portlethen church, following the Joint Service

Craft Fayre

Saturday, 20th September, Portlethen Church Hall 2.00pm - 4.00pm, raising funds for The Larder

Christmas Coffee Morning

Will be held in Newtonhill Church on Saturday, 29th November with the usual stalls.

The Girls Brigade

1st Newtonhill Girls' Brigade continues to meet every Monday evening in Newtonhill Church, beginning at 6.15 pm, with activities for girls from 5 years' old and upwards.

They would be happy to welcome any girls from Portlethen too.

Support from the community is always welcome and if you require further information, please contact girlsbrigade@newtonhillchurch.org.uk



The Guild

The Guild meets regularly in Newtonhill Church on a Wednesday. New members are always welcome to join us.



If you would like to get involved in any of the events or organisations listed above, please speak to anyone at the church or through our website: www.kincardine-coastal-church.org.uk

Portlethen Health Walking Group

The group is always looking for new members to join us on our walks. Walking could improve your health and fitness.

We meet every Wednesday; the walk starts at 10.00am from the Jubilee Hall. The walks last about one hour and are flat and easy. We walk at a leisurely pace.

The walks are in and around the Portlethen parks, the Community Woodland and the Moss.



We now have a Facebook page, "The Portlethen Walking Group" where you can keep up to date on our walks.

If you require any more information email me, Raymond White, at mastrickwalkers@gmail.com



We Clean Ovens

...so you don't have to!

Call us today to have your cooking appliances sparkling, using our own eco friendly products.

Our oven cleaning experts will leave you free to enjoy your valuable leisure time.

- Range & Aga Specialists
- Ovens & Hobs
- Extractor Hoods
- Microwave Ovens
- Traditional Stoves

oven
oven valeting service

Local | National | Affordable



For LOCAL Service call: **01569 552344** ovenustonehaven.co.uk



REC & PRESCHOOL

Ages 3yrs+
Just for fun
Boys & Girls
No Experience Req

Cheer, Dance & Gymnastics

View our timetable, prices & book online:
www.allstarcdg3.wixsite.com/allstarcdg




COMPETITION TEAMS

CHEER, POM, HIP HOP, JAZZ, LYRICAL & TUMBLING

Please visit for more information
www.ladanceandcheer.wixsite.com/ladc



NEW OPEN PLAN FACILITY WITHIN PORTLETHEN

NOW AVAILABLE TO HIRE

SPRUNG, MATTED FLOOR & MIRRORS
IDEAL FOR DANCE / FITNESS CLASSES,
PRESCHOOL & COMMUNITY GROUPS

STUDIO 6

PLEASE GET IN TOUCH FOR MORE INFO
STUDIO6RENTAL@OUTLOOK.COM



AFRIMART - African-Caribbean Store

AFRIMARTUK

NOW IN

PORTLETHEN

AFRIMARTUK
01224 01138
Available on the App Store

EG
on the move
Portlethen Services

UNIT 48 CITY SOUTH BUSINESS PARK
PORTLETHEN BY EG PETROL STATION.
ABERDEEN

TURN RIGHT

Interocean Marine Services
Revive! Aberdeen
AFRIMART UK
Saltire Cookers - Refurbished Aga...
Cwtch Hair And Beauty Boutique
MGS Logistics
A92

SCAN FOR DIRECTIONS

UNIT 48 CITY SOUTH BUSINESS PARK
PORTLETHEN BY EG PETROL STATION.
ABERDEEN

EIS WASTE SERVICES

Total Waste Management & Recycling



Recycling For Zero Waste

01224 784100

www.eiswaste.com

- **Competitive Skip Hire**
- **Skips & Containers from 4yd Mini Skips to 40cu.yd Ro/Ro**
- **Drop Door Skips for Wheelbarrow Loading**
- **Confidential Document Destruction**
- **Office Waste Recycling**
- **Same Day Delivery, Fast Friendly Service**

As a keen supporter of the local community we would like to offer you *10% discount on all Skip Hire and Confidential Waste Destruction as a reader of the

CLOCHANDIGHTER

To claim this exclusive offer for residents all you need to do is contact us for a quotation and quote **COVE10** to a member of our team and your discount will be applied

*this offer is available to customers with a home address in Portlethen where the skip must be placed

**EIS Waste Services Ltd, a Family owned Local
company for the Local Community**



EIS Waste Services is a trading name of EIS Waste Ltd Registered in Scotland SC254990.
Registered Office Gallowhill Recycling Centre, Checkbar Nigg, Aberdeen AB12 4LP



Kincardineshire
Development
Partnership

Meikle Carewe Wind Farm Community Fund

The Meikle Carewe Wind Farm Community Fund opened for applications on 1 July 2025. Applications to the fund can be made from any constituted community group, club, society, charity or other not-for-profit entity that operates and benefits residents living in the following Community Council areas (the Area of Benefit):

- Crathes, Drumoak and Durris
- Newtonhill, Muchalls & Cammachmore
- North Kincardine Rural
- Portlethen and District
- Stonehaven and District

The energy company RES has established a community fund which will see more than £25,000 available to support local community projects every year during the lifetime of the Meikle Carewe Wind Farm. The fund is administered by Kincardineshire Development Partnership (KDP) and managed by a Decision-Making Panel made up of representatives from the local Community Councils.

The fund total for 2025 is £39,572.48.

The fund is open for applications from 1 July 2025 to 30 September 2025. The Decision-Making Panel, along with a non-voting representative from Kincardineshire Development Partnership (KDP), will then meet to consider applications.

Application forms and guidelines will be available from:

KDP website: www.kdp.scot

Tel: 07903 156864 Email: margo@kdp.scot

Need to speak to your local MP/MSP?

Andrew Bowie MP

House of Commons

London, SW1A 0AA

Tel. 01224 766959

or e-mail andrew.bowie.mp@parliament.uk

Audrey Nicoll MSP

51 Victoria Road, Torry, Aberdeen AB11 9LS

Tel. 01224 876743

or email: audrey.nicoll.msp@parliament.scot

Twitter: @Audrey4ASNK



MEET THE TEAM **BILL FRASER – CHAIRPERSON**



Portlethen and District
Voluntary Community
Ambulance Association

Scottish Charity Number: SCO 31829

After retiring in 2021, I moved to Aberdeenshire with my wife, Linda in June 2022 to be closer to immediate family. Having settled into our new home in Chapelton and after getting the house and garden into shape, I found I had some spare time on my hands so decided to help out the community and volunteered for the Community Ambulance, joining the team in May 2023.

I joined initially as a relief driver and soon was offered Tuesday afternoons as a permanent slot which is when you will tend to see me behind the wheel. I enjoy driving and helping people and being relatively new to the area this has helped me see parts of the area I otherwise might not have visited. It is good having a bit of a chat and a laugh with the passengers as having a smile on your face helps brighten everyone's day.

Not long after I joined, the post of Special Requests and Deputy Rota Coordinator was created to have a central point for receiving and managing requests to use our 'wee blue bus'. I was persuaded to take on this role and have enjoyed helping several other organisations in the area with outings requests while maintaining our main focus on helping patients get to and from their appointments at the Medical Centre and Dental Care in Portlethen.

I have recently taken on the position of Chairperson and look forward to the challenges ahead. Earlier this year our previous Chairperson, David Walton, felt a need to step down from the role earlier than he would have liked, for health and personal reasons. I would like to take this opportunity to thank David for his time in the Chair which saw the launch of our new minibus at the start of 2024 with an Open Day to mark the occasion. David will continue to be involved with the Ambulance Association and has left it in good health with a great friendly team and running like a well-oiled machine.

HOLYROOD GARDEN PARTY – COLIN STRATTON



It was a privilege and an honour for my wife and me to be asked to represent the Community Ambulance at The Royal Garden Party at Holyrood Palace, the king's residence in Edinburgh. The invitation arrived in the middle of June, inviting us to attend the Garden Party on 1st July 2025. It was a nice but overcast day and, along with 8000 guests, we had to pass through tight security before we entered Holyrood Palace Gardens.

As we walked through the gardens, we were entertained by two military bands. The Royal Party, which consisted of the King, Queen and Princess Anne, emerged from the Palace at 4:00pm, and each of them took a different path and chatted to various people along the way. Neither my wife nor I was approached to speak to those in the Royal Party, but we were close enough to take a photo of the King.



Around 5:00pm we joined a queue for afternoon tea. The catering was excellent and within 5 minutes, we emerged with a cup of tea, sandwiches and delicious cakes. It was a fantastic experience and one which will live in our memories for years to come.

The committee would like to thank H & P (formerly KCA Deutag Ltd) for their generous donation which contributed to MiDAS training costs for our new drivers and refresher training for some of our long-standing team members.

If, having read this, you have some spare time on your hands each week and would like to help out as one of our drivers, then, if you have a D1 on your driving license, give us a call; we are always looking for more volunteers to join us onboard.

Contact Lee Drain on 07876 301062 (ldrain@aol.com)

or Bill Fraser on 07974 971055 (billfraseramb@yahoo.com)



Bridge End, Downies Road,

Portlethen

Tel: 01224 781158 Email: lethenmotorsltd@outlook.com

MOT TESTING STATION - CLASS I, II, IV
FOR DIESEL, PETROL CARS & LIGHT COMMERCIALS UP TO 3000kgs
SERVICING, DIAGNOSTICS, MECHANICAL REPAIRS
TO ALL TYPES OF VEHICLES & MOTORCYCLE TESTING
Electronic Wheel Balancing
Tyre & Exhaust fitting at competitive prices
MINTEX - Brakes Fitted LUK - Clutches Fitted



**All our work is carried out to very high standards at very competitive prices,
by qualified skilled mechanics and Electric/Hybrid Vehicle qualified staff**

All major credit cards accepted

10% discount when service is booked with MOT



Fully Qualified and over 20 years' experience.

Beauty Room in Portlethen. Treatments include Hair Removal, Gelish Nails, Facials, Spray Tans, Ear Piercing, Manicures, Pedicures, Teeth-Whitening, Eye treatments - Tinting, Extensions, and Lifts,

PORTLETHEN GROUP PRACTICE



Staffing

Doctors

We are delighted to announce that we have appointed two new Salaried GP's to the Practice. Dr Fiona Mosgrove joined the Practice on 30th May, working Wednesdays and Fridays. Dr Aisling Halliday joined the Practice on 5th June, working Wednesdays and Thursdays. Both Dr Mosgrove and Dr Halliday have settled in well and are already assets to the team.

In these difficult times for GP recruitment, we are delighted that we have been successful in appointing two new members to our team.

Dr Graeme Brown retired from the Partnership at the end of March. We are delighted to say that Dr Brown has now taken up a salaried GP post with us. Dr Brown will work in the practice on Mondays and Tuesdays.

Nursing Team

We are delighted to inform you that both our Practice Nurses, Laura and Diane have successfully completed their training in diabetes care and have both been running diabetic clinics alongside Irene our experienced diabetic nurse for the past 9 months. This has enabled the practice to provide diabetic clinics 5 days per week.

Practice Pharmacist

We successfully recruited a new Practice Pharmacist in February 2025. Varrie Watson joined the practice after working for over 20 years in community pharmacies throughout Grampian. Welcome to the team Varrie.

Staff leaving

It is with very heavy hearts that we will be saying farewell to our Lead Practice Pharmacist, Dr Gillian Cunningham. Dr Cunningham and her husband will be moving to Australia at the end of August. Dr Cunningham has been with the practice for over 20 years and was pivotal in the management of our prescription assistants. Dr Cunningham has continued to oversee all aspects of the repeat prescription workload. Dr Cunningham also runs Cardiac and Hypertension clinics. Dr Cunningham will be a huge loss to the practice, but we want to wish her all the very best in her move to Australia.

GP Registrars

Portlethen Medical Centre has a long history as a training practice.

Dr Austin Akpojishi our ST1 GP registrar has completed his first 6 months of GP training. He will leave us in August and return to us in August 2026 as a ST3 GP to continue his GP registrar training until 2027. Dr Austin has been a great member of the team. We want to thank everyone who has been supportive of his training. We look forward to welcoming Dr Austin back in 2026.

Dr Laura Jane Martin will re-join the practice on 15th August to resume her ST3 GP registrar training. Some of you may remember when Dr Martin was here in 2024 on her ST1 6 months training placement. Dr Martin will be with us until 2027.

Repeat Prescriptions

The online repeat prescription service is available from 8.30am on Mondays through to 5pm on Fridays (24 hours a day). Please note the service is not available over the weekend, when the practice is closed.

We encourage patients to use this service, as it is the safest and most efficient method for ordering repeat prescriptions. We continue to encourage more patients to sign up for this service. If you wish you can sign up on the practice web site or by speaking to one of our reception team who will be happy to help you.

If you don't wish to use the online service you can order your repeat prescriptions by placing your repeat prescription re-order form in the box at the front entrance or by posting the repeat slip to the practice. Please do not hand in the repeat slip to the local pharmacies. This will delay the process of collecting your prescriptions. Please note we do not accept repeat prescription requests over the telephone.

Please remember we require 3 full working days notice before you can collect your repeat prescriptions from the pharmacy of your choice.

Engage Consult

We would like to thank all the patients of Portlethen Medical Centre for their ongoing support of the Engage Consult access system. We are continually looking at ways of improving the system. We welcome feedback from the patients, relatives and staff. It is very much a work in progress. We are very grateful to have supportive patients as we recognise that this has been a major change in how patients access care.

Staff Training and development days

The practice will be closed for staff training and development on the following dates. The practice will be providing an emergency service only during these times. There will be Instructions on the recorded message advising how patients can contact the doctor.

Wednesday 27th August 13.00 – 18.00; Wednesday 27th November 13.00 – 18.00

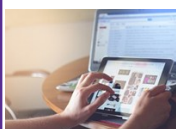
In Memory of our former lead nurse, Kate Bisset

Many of you will remember our lead nurse Kate Bisset. Kate sadly passed away in October 2021 after a courageous battle. It was always planned that the practice would commission a tribute to Kate. This has now been fulfilled. A beautiful table and benches have been made out of a single oak tree. It has taken a long time to find the exact tree. Dr Reed has been liaising with Touckswood Forester from Stonehaven for 3 years to find the right tree and then to create the table and benches, but my goodness, has it been worth the wait. We have this positioned at the back for the practice so staff can take their breaks outside when the weather permits. This summer of great weather has seen plenty of use of the table and benches. All the staff love it and we hope it will be enjoyed for many years to come. We are in the process of arranging for a plaque to be fitted. I am sure if you are walking round the practice in the evenings or weekends, you will have seen it. It really is beautiful. Kate would have loved it. Thank you to Mr Edward Ewan who helped manoeuvre the table and benches into place with his tractor, along with Dr Reed and the team from Touckswood.

Portlethen Library: Discover Your Local Library!

Your community library is buzzing with activity whether you're a book lover, a parent looking for fun ways to keep your children engaged, or someone simply looking to meet new people.

Bookbug Every Tuesday at 10am, Portlethen Library hosts a Bookbug session free and open to all. The sessions, featuring story and songs, are aimed at pre-schoolers and are relaxed and fun. We also host a monthly Bookbug session on the first Wednesday of the month at the Asda Café at 11am.



Tech Help Are you over 50 and in need help with email or using a new device? Stop by during the Digital Skills session on the first Thursday of the month from 10.30am-12.00p.m

Lego Club Get creative and come along to Lego Club after school on a Monday 3.30-4.30pm (and during the holidays). Free and open to all school-age children.

Games Group A new games group is meeting in Portlethen Library every Monday from 10am-1pm. We have Boggle and Rummikub, or bring your own game.

Chat & Craft This creative group meet every Wednesday 1.30-3.30pm and is open to all crafters no matter your skill level. Come along and meet new friends.

Exciting Library Events Coming This Autumn!

The library team at Live Life Aberdeenshire is looking forward to a fun-filled autumn, with a fabulous range of activities planned for the upcoming Tattie Holiday programme. Families can look forward to creative, engaging, and free events taking place across libraries in the region. Full details of what's happening in your area will be available on the Live Life Aberdeenshire website closer to the time — so keep an eye out!

Looking ahead to November, libraries across Scotland will once again take part in the Scottish Book Trust's Book Week Scotland celebrations. This year, all authors featured in Live Life Aberdeenshire's library events will be local writers, offering a fantastic opportunity to celebrate homegrown talent. Full details of the programme will be shared on the library website and social media channels toward the end of September.

Visit the library or check our website for a full calendar of events.
www.livelifeaberdeenshire.org.uk

Library opening hours are:

Monday 9-5	Tuesday 9-1
Thursday 3-7	Saturday 10 -2

Newtonhill Portlethen 50+ Walkers

Enjoy walking in our beautiful countryside?

Our group welcome new walkers so please get in touch with Christine on 07762 746710 or email Membership.Grampian50plus@outlook.com

We are part of a Network of 46 groups in the Grampian area, who arrange extra walks, training and events.

A weekly email is sent out with details of the next Monday's walk and where to meet (either Newtonhill Church, or Bourtree Hall in Portlethen) at 9.30 a.m.

For newcomers to the group, their first walk is free. After that, it's £5 for each walk, to cover car share costs. Walks vary from 5 to 7 miles usually within an hour's drive, often with longer and shorter walk options.

Bring walking boots or shoes (with a good grip), waterproofs, hat/sun-hat & gloves, a packed lunch and a drink. Hope to see you on a walk soon!



NP Walkers enjoying lunch by the River Dee

John Duncan Joinery

UPVC WINDOWS & DOORS
GENERAL JOINERY

📞 07843 095378

📞 01224 784464



For all your Joinery Requirements

Email: johnduncanjoinery1964@gmail.com

Councillor Catherine Victor



We have had a busy few months in the Council leading up to recess at beginning of July. That does not mean we are all on holiday, but it gives us a break from official meetings for a few weeks. That's welcome, lets my brain chill for a bit!

We have another new leader of the council in Stuart Adams, same Admin group, just changed their leader for the second time, so leader No.3. We'll see how that goes.

There has been a lot of discussion going on about our Sheltered Housing (SH) stock, and how we can alter things to help balance the housing budget. This does not affect Ward 17 directly, as our SH is not one in any danger of closure but, as elected Councillors, we have a chance to put our input at the workshop meetings. There were 17 SH on the list for discussion, mostly North Aberdeenshire, and the initial thoughts were to close them all as they were not financially viable for various reasons. My first thoughts, on hearing this was the effect on the residents of these facilities. This was their home we were discussing and it's all very well to say they will be compensated and found a new home, but I know, from the experience of my mother living in a SH, that there is a lot more to be considered than just a roof over your head. These complexes are little communities, where they look after one another and depend on the friendships that develop within. After much consultation and discussions, including the public, the list came down to 7, still too many in my opinion, but a move forward. There are still discussions going on, so we will see where we end up.

Our grit bins are the next point of discussion. First, I must remind the readers, that as part of the Opposition Group, we did not have the removal of the Bins in our budget proposals. We took a different route to balancing the Council Budget. However, our budget proposals were not adopted and the Admin one was, including losing some grit bins. Never did I think that they were talking about 1200 bins! There was no discussion on this, and it came as a shock, that not only were they not filling the bins, but they were going to physically remove all the ones that did not fit the criteria, 1200 in total. I have been in discussion with RI to request a rethink and allow Communities to adopt their bins and be responsible for their filling. Simple common sense, you would think but it's taking some persuading to have them rethink policy. I am optimistic but we wait and see.

I am also helping to get a combined group together from Ward 17 to start a Growing Club for the whole area. They have a similar group in Mearns which has been very successful in growing plants to distribute to all the towns and villages in their area. Not only does it provide joy in the summer, but it is also very good for your mental health to be involved in this type of outdoor pursuit. If you are interested contact your local Community Council to get involved.

I hope you have had a wonderful summer; next edition will be for Xmas.

Catherine Victor

Contact your Local Councillor

David Aitchison - cllr.d.aitchison@aberdeenshire.gov.uk

Shirley Burnett - cllr.s.burnett@aberdeenshire.gov.uk

Mel Sullivan - cllr.m.sullivan@aberdeenshire.gov.uk

Catherine Victor - cllr.c.victor@aberdeenshire.gov.uk

SPEAR

- PHYSIOTHERAPY
- SPORTS MASSAGE



Better Never Stops

01224 900102



SCAN TO BOOK

OUR CLINIC LOCATIONS:

PAUL LAWRIE GOLF CENTRE, ABERDEEN SPORTS VILLAGE,

WESTHILL & THE SHED HEALTH CLUB (TARVES)



ELECTRO-TEK
ELECTRICAL CONTRACTOR

Domestic,
Commercial
& Industrial
Electricians



We offer first class electrical services across the North East. Our fully qualified, professional electricians are on hand to support you and are committed to providing an outstanding customer service every time.

- All Aspects of Electrical Maintenance & Repairs
- Lighting Design & Installation
- Additional Sockets, TV & Phone Points
- EV Car Charging
- Installation of Smoke Detectors
- Inspection, Testing & Certification
- Landlord Services (EICRs, PAT Testing etc)
- Commercial Maintenance (Guaranteed Fast Response)

10%
LABOUR DISCOUNT
FOR NEW
CUSTOMERS

GET IN TOUCH FOR A FREE NO OBLIGATION QUOTE TODAY

www.electro-tek.co.uk
01224 791914 / info@electro-tek.co.uk



Abersheen Valeting

Mobile Valeting and Detailing



- **Full Valets**
- **Interior Valets**
- **Exterior Valets**
- **Monthly Maintenance Cleans**
- **Machine Polishing**
- **Winter Protection**
- **Paint Enhancement**
- **Stain Removal**
- **Free Quotes**

*We treat your car as if it was our own and can take care of it from the comfort of your own home.
Over 5 years experience and fully trained.*



Contact: Craig Fyfe
Phone: 07783191797
Email: info@abersheenvaleting.co.uk

Portlethen based but cover Aberdeen and Shire

JM MAINTENANCE SERVICES

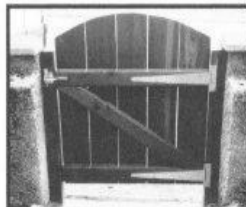
Call Jim Michie on 07766 946852

PRIVATE & COMMERCIAL
Free Estimates
SEPA Registered



- ✓ Paving & Lock Block
- ✓ Decking
- ✓ Fencing inc Ranch and Upright
- ✓ Driveway Cleaning & Power Washing
- ✓ Shed & Greenhouse Erection

- ✓ Grass Cutting
- ✓ Gardening & Landscaping
- ✓ Garden Tidy Up & Weeding
- ✓ Hedge Trimming
- ✓ General Home DIY & Maintenance





McINTOSH DONALD

MASTERCRAFT BUTCHERS

VALUE PACK

1LB MINCE
4 BURGERS
4 PORK CHOPS
1LB SAUSAGES
2LB ROAST BEEF



McINTOSH DONALD

MASTERCRAFT BUTCHERS

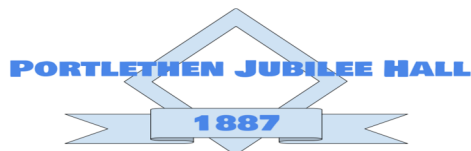
FAMILY PACK

1LB MINCE
1LB STEW
4 BURGERS
1LB SAUSAGES
PACK OF BACON OR 6 EGGS



McINTOSH DONALD

For over 100 years,
McIntosh Donald has
been butchering,
carving and standing
proud over every
serving of our prime
Scottish meat.



Email - Jubileehallportlethen@gmail.com
Facebook - Jubilee Hall Portlethen



News from your community hall

It's hard to believe, as I write this, that the kids are off on summer break; many of our regular Lets also take a summer break and this gives us a chance to refresh areas of the fabric of the hall that have taken some wear and tear over the first half of the year.

This is an ideal opportunity to recognise the hall committee, who do so much to support the local community through their efforts, often in the background, often unseen, but nevertheless, invaluable.

Darren, my Vice Chair, seems tireless in his efforts to improve the hall. Thanks to Darren, we now have an Evacuation Siren and with the help of our Booking Clerk, Charles, an effective Fire Plan which guides our clients safely out of the building and into the assembly area by the RagBag bins. We have new markings in the car park, to assist in maximising the number of cars we can accommodate. We also have two designated parking spaces reserved for disabled clients.

Our toilets seem to be on a continuous improvement cycle, with new electronic hand driers, new flooring, and the latest upgrade; timers to control the heating in the toilet area! The controller can be set from 15 minutes up to 2 hours and the heaters will switch off automatically after the selected interval. This avoids the cost of the heaters running when the hall is not occupied.

Our cash flow is managed by our Treasurer, Mandy. Like a few of our committee, Mandy has a full-time job and keeps an eye on our income and expenditure in what little spare time she has. We have recently recruited an Invoice Clerk, who we hope will take some of the pressure off Mandy.

As the hall gets more and more popular, pressure falls upon Charles, our Booking Clerk, who keeps on top of all our hall bookings. He fields enquiries, maintains the hall diary and ensures there is someone available to open and close for each of our "one off" bookings.

Julie and Veronica run our Flagship enterprise, the Fine Piece Café on Wednesday mornings. Their tireless efforts to welcome, seat, feed and entertain dozens of locals every week is a wonder to all! which has been recognised widely in the local community.

As if that wasn't enough, they also run our Lunch Club once a month for those in the community with special needs, a very worthy cause.

Joyce is another invaluable member of our committee. Since she lives nearby, she has taken on the unenviable roll of our "bin lady"! She also opens and closes the hall with monotonous regularity when there is no one else available - she deserves more than a medal!

Ken provides practical support in many areas - he knows about "shared drives" and also where to get free trees! These are rare skills that need to be nourished and encouraged!

Marion is the Committee Secretary, note the capitals! She keeps minutes of our (often rambling) meetings, keeps us on track when we wander and generally maintains some order during our monthly meetings.

Damien is our IT guru. He alone understands the heating system and the hall WiFi and we are grateful for his ongoing support in keeping the hall warm in winter and cool in the summer. The WiFi supports connection to our sound system and allows our clients to connect to our fixed, ceiling mounted projector and screen should they want to hold meeting with presentations.

Finally, let me recognise Heather, who is relentless in her desire to see the RagBag bins filled and, more importantly, emptied on a regular basis. While the returns on the clothing and shoes donated has steadily fallen over the past months, the regular trickle of funds it generates is a very welcome source of income for the hall.

I would like to thank each and every one of my committee for their dedication and support over the years. It really is much appreciated.

We are moving the organisation to an Integrated Organisation under the Scottish Charities Regulator, and this will take a great deal of work over the next 12 months. It will not deflect us from our primary role of supporting our community, so please, if you have not visited the hall yet, please do so and we'll look forward to hosting your event in the near future.

- We look forward to seeing you soon! Dave Johnstone, Chair

BOOK THE HALL

The booking rates for the Jubilee Hall are as follows:

- Rental of hall: £20 per hour
- A projector, screen and high quality sound system are available for an extra £20 per booking.

Contact our email address to book the hall, or for general enquiries:

Jubileehallportlethen@gmail.com



The Lodge of Portlethen No. 1805

*On the roll of
The Grand Lodge of
Ancient Free and Accepted Masons of Scotland*

Hi to everyone. Now we are into, if not past, the summer and holidays, we hope you have all taken advantage of this and enjoyed time with the family or just enjoyed the break.

The Lodge has been quite busy since our last article, and we have just started a clean-up and general refurbishment of the Bourtree Community Hall. The hall and other rooms are in the process of being cleaned and painted. There will be removable boards so



that each hall user can hang up their own notice boards and remove and store them when they leave the hall, thus leaving the hall clear for the next group. 99.99% of the work has been completed by R.W.M. Bro James Martin who has taken the time to

paint the hall and is steadily working his way through the other rooms, painting them as well. We are awaiting some parts to repair the toilets and repair the general damage which has been done to the hall. Once this is completed, people will be able to come and have a look before the various groups are back.

Just a wee reminder: There is a DE-FIB outside the Bourtree Community Hall door, in case you need to use it. All you have to do is call the emergency services, ask for the Ambulance Service, and give them the location and you will receive the code.

The Province of Kincardineshire has two well versed gentlemen, total volunteers, who are quite willing to spread information about Prostate Cancer to any group at an agreed time, this also includes women's groups, as typical men seem to leave the symptoms for another day whereas the lady of the house might be able to spot changes and get him to the Doctor for the test. I mentioned before that the Grand Master Bro Ramsay McGee had tasked the lodges to raise awareness and money for Prostate Cancer Scotland, and I was informed the total money raised is now over £2million pounds, what a great achievement.

The Provincial Charity Ball is now sold out with some 30 people on the reserve list. They will probably have to look for a bigger venue for next year!

Now, this is quite important: We would like to stir up a memory in the minds of the older Master Masons or Masons who have fallen away from their Mother Lodge for whatever reason, be it work commitments, moving away or maybe just out of the routine of attending. Hopefully, you are not on your own, just twiddling your thumbs or even doing some gardening just to pass the time away. Why not instead come along to The Lodge on the first Friday of each month January through to December? We would be happy to see you and hopefully this would get you out the house for a while, maybe make

new friends, enjoy a cup of tea /coffee and sandwiches/sausage rolls, and a good blether with Brothers who you may already know. So don't be bashful. Drop me a line or give me a call and you will be met, introduced to all, and hopefully enjoy your evening with us.

YOU WILL BE MADE VERY WELCOME

As always, our invitation goes out to all Honourable men of like-minded thoughts to come and join us, just give me an email or call and I will arrange for you to meet some brothers who will answer as many of your questions as they can.

Until the next edition, stay safe and we wish you all good health and happiness.

BONNIE LANDSCAPES & SHEDS

Fencing Patios Paths Gravel Turfing

6 x 4 Sheds (custom sizes also available)

Contact John – mobile: 07504782322

Email: bonnielandscapes@yahoo.co.uk



- Luxury taxi
- Airport and Hotel Transfer
- rail & ferry transfer
- local & long distance

- Sightseeing tours
- vip work
- corporate accounts
- card payments available

07525 471063

News from the Shed

Portlethen & District Men's Shed is open to anyone who wishes to come along and see what The Shed does. **Our opening hours are Monday, Wednesday and Friday from 10am to 1pm. Check out our Facebook page for more details.** We are located on Cookston Road next to the Porty Cabin.

Whether you wish to be actively involved 2 or 3 times a week or occasionally, you will be made welcome.

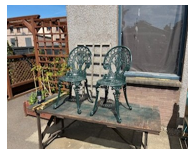
The members continue to respond to requests from the local community. These range from garden planters, garden benches, garden furniture and other smaller items. The Shed is happy to repair or refurbish your garden furniture and other items that are within our capabilities so just let us know what you need. Should you wish the members to make you an item or if you have a project you would like us to assist with, please get in touch and we can discuss your requirements.

As you may be aware, the Men's Shed has outgrown its current premises and has asked Aberdeenshire Council to approve the transfer of an unused building, as per Scottish Government Community Asset Transfer Legislation, to the Men's Shed. This is the Social Work Building that has been unused since November 2024. To our surprise, it has been a long and hard fight, and we expect a decision on our submission in early September. The legislation does allow several levels of appeal should we get a negative decision in September. The Men's Shed gratefully thanks the wide range of Portlethen residents, organisations, and members of the UK and Scottish Governments who have written numerous letters of support for our desire to move to larger premises. The Men's Shed currently has a number of community groups using our current Shed for their meetings and we believe we can help support more local groups in various manners if we get the building transfer approved.

Here are some of the numerous pieces of garden furniture we have been rebuilding recently for the local community.



Rebuilt
garden
bench



Refurbished
garden
chairs

If you wish to make a donation to Portlethen & District Men's Shed of timber or tools, please get in touch. We can arrange collection of your donations. Our thanks to everyone who donated tools and wood over the past few months.

If you wish to join the Portlethen & District Men's Shed, please contact the email address below and ask for a Membership Form or come along for a blether and learn more about how to get involved.

Jim Duguid, Secretary, Portlethen & District Men's Shed

Email: secretary@portlethenmenssheds.co.uk



Welcome to the Bettridge Centre, your friendly local leisure centre in Newtonhill, here for you and all your family.

With regular pre-school, after school, sports and keep fit classes; dance, yoga and martial arts; singing and craft groups, lunch club and social occasions – we welcome everyone of all ages and all abilities.

And when you want to celebrate a special event, we can offer you the venue you need at a price you can afford. Our friendly, professional staff are here to help you make it a day to be remembered.

New Party Packages!

Our popular Saturday Coastal Play Parties have been relaunched and they're booking up fast – check out our website's Parties page to find out more. DIY parties are also available with a wide range of equipment to hire.



The centre is fully accessible and has disabled toilet and shower facilities. With easy transport links via the A92 and the bypass, plus free car parking - make life simple for your guests by holding your event here.

To find out more about us and what we have to offer, visit www.bettridgecentre.org.uk, follow our Facebook page or call **01569 731320** during office hours, we'd be delighted to hear from you!

THE LARDER (PORTLETHEN AND SURROUNDING AREAS)

#THELARDER #FORTHECOMMUNITYBYTHECOMMUNITY



Can you believe it..... The Larder celebrated it's 5th Birthday in July?!

When we moved into the Porty Cabin, we didn't expect to be there a year later but all of a sudden, it's been 5 years! Things have changed quite a lot since 2020 but unfortunately, we are helping more individuals and families than ever before.

If you find yourself struggling with food cost and could benefit from extra help, please scan the QR Code in our poster opposite to place an order or visit our Facebook page and click the link to open a Google form to choose the items you are short of. We can also be contacted via c19portlethenhelp@gmail.com or 07376 133870.

The Larder at the Porty Cabin on Cookston Road (opposite Portlethen Primary School) is here to ease some of your financial difficulties, as no one should have to choose between "Heat or Eat". We offer fresh milk, bread, eggs, fruit and vegetables, freezer, fridge and cupboard items, toiletries, cleaning and baby items, all for a small donation, pay what you can.

The Larder is open **Monday 6pm-8pm, Friday 2.30pm-4.30pm and Saturday 10am-12pm.** Our volunteers are there to help anyone needing some extra support and you do not require a referral from another organisation.

There are still many people in our local community that do not realise that The Larder is available to **EVERYONE**, not only families that are struggling financially. Please come in and visit The Larder to see the organic vegetables donated from the farm at Bridge of Muchalls through the @oneseedforward organisation and the fruit and vegetables received weekly from FareShare. These items are for **EVERYONE** to benefit from, for a small donation, pay what you can. We also sell fresh farm eggs, soup packs, fruit packs and bananas at a fair price. This QR Code can be scanned if you would like to donate to The Larder Funds.



Please see our weekly Facebook updates on the food items donated or pop in to see for yourself. All monetary donations are then used to purchase fresh items weekly. The Larder also accepts donations of non-perishable food items, cleaning and toiletries items and any type of pet food.

Please pop in soon to see our Larder Team.



FRESH FRUIT AND VEG

FREE SANITARY PRODUCTS

MEALS

Portlethen Larder

FRIDGE ITEMS

CUPBOARD ESSENTIALS

MILK & BREAD

FRESH FARM EGGS

Donations always appreciated

Supporting the community who may be facing hardship in a dignified way.

Stopping food waste in our community by offering surplus food.

No referral needed.
Open to all.

Scan the QR code or use the contact details to request a order.

Porty Cabin
Cookston Rd
07376133870
c19portlethenhelp@gmail.com

MON 6-8, FRI 2.30-4.30 AND SAT 10-12

@thelarderportlethen






Fishermoss School

'Being the best we can be'
Respect-Honesty-Responsibility-Kindness-
Hardworking

A celebration of our Primary 7 Leavers' achievements.....

Young Volunteers Awards

As a school, we actively encourage our Senior Pupils to be involved in the iVolunteer Awards Scheme. Many of our Primary 7 pupils did a fantastic job volunteering both at school and in the community. Pupils can achieve Bronze award for a minimum of 10hrs volunteering, Silver for 25hrs, Gold for 50hrs & Platinum for 100 hrs and over. Pupils who took part were presented with their certificates and trophies at our Leavers' Assembly. Congratulations to the following pupils for their achievements..... Alivia Lawrie, Charlie Tait, Innis Mathers, Roman Brown, Sasha Rimsa, Kasper Buchnajzer, Megan Christie, Taonga Daka, Lucas Lafferty & Maja Stolarczyk for achieving Bronze. Bradley Burnett, Wumi Mtika & Maia Murray achieved Silver, and Siana Angus, Matthew Harrison, Ross Morrison & Juliette Starr achieved Gold. Lucy Cruickshank, Iona Kennedy, Aila MacDonald & Sanvithi Shastry for achieving Platinum, the top award! Our Fishermoss School 'Young Volunteer of the Year' shield has gone to Aila MacDonald for having the highest number of volunteering hours. Congratulations to them all for their efforts and for showing kindness, responsibility and hard work. Something for them to add to their CVs!



Lectures for Schools Aberdeen University

Our **Primary 7 pupils** attended lectures for Schools at Aberdeen University, run by **The Hydrographic Society** - Scotland Branch. In their annual Schools Lectures, they presented 'Surveying for the Energy Industry', with talks about what surveying is, new technology and gadgets used, and presentations from people who have worked offshore. The aim was to inspire young people from Primary 7 upwards to consider science subjects when they make their choices for Nat5 and beyond, and to have fun while learning. As part of the event, there was the opportunity for schools to participate in a range of poster competitions. Our Primary 7 pupils did us proud with their entries which were of a very high standard! Congratulations to **Logan Purves** for winning the trophy for the Remotely Operated Vehicle Simulator game, which included winning £150!



Scottish Maths Challenge

Gold stars to our **Primary 7** pupils who participated in the Scottish Maths Challenge and successfully gained awards. Congratulations to Juliette Starr on achieving a Gold Award. Juliette attended a prizegiving ceremony at the University of Aberdeen. The ceremony began with a presentation by Dr Markus Upmeyer on the subject of Finite Geometry: The Math Behind a Good Game of Dobble! Who knew! This was followed by a celebration lunch. Congratulations also to Ross Morrison, Aila MacDonald & Alivia Lawrie for achieving Bronze. We are extremely proud of our Primary 7 mathematicians. Hats off to them for all their hard work and getting involved!

Fishermoss Sailing Club



Well done to **Charlie Tait**, one of our **Primary 7** pupils, for entering the Scottish Schools Sailing Championship event at Loch Earn and the Blue Toon Schools sailing event for Aberdeen and Aberdeenshire school pupils. He was our solo sailing representative for Fishermoss School and was a great ambassador for our school. We are so proud of his sailing skills and all he achieved at these events. There were 60 boats in total at the event, sailors from all over Scotland. Charlie sailed exceptionally well and finished 5th out of 14 boats in his fleet overall. The top 5 were all from Aberdeenshire!

John Muir Award

Well-done to all our **Primary 7** pupils for their hard work to achieve their John Muir awards. This meant completing four sections; Discover, Explore, Conserve and Share. The pupils planned and carried out each section of the award. The creativity demonstrated, the responsibility taken and the enthusiasm for the natural world was great to see. We trust that this has enhanced their awareness of wild places and that they enjoyed taking responsibility for them and sharing their experience. The John Muir Award is a progressive scheme, and we hope that our pupils will continue to create positive connections with nature.



We wish our Primary 7 Leavers every success in their Secondary Education, and we look forward to welcoming new pupils in the Autumn Term.

Margaret Ferguson
Head Teacher



865 (Portlethen) Squadron: Success Continues!

The successful start to 2025 has continued at 865 (Portlethen) Squadron, with other standout achievements taking centre stage — both marking our continued commitment to excellence, leadership, and service.

In the last edition of the Clochandighter, we were awaiting the results of the next stage of the Less Trophy Competition to find the best Squadron in Scotland and Northern Ireland – well we were delighted to find out that we won that stage!! This is one of the highest honours within the Region and a true reflection of the hard work, teamwork, and professionalism shown by our cadets and staff alike.

As a result of this success, we progressed to the next stage competition, which seeks to identify the best squadron in the RAF Air Cadets organisation. We were privileged to welcome Commandant Air Cadets, Air Commodore Al Lewis to the unit in June. During his visit, he spent time with our cadets and staff, gaining insight into our activities and ethos during a typical parade evening. It was a proud opportunity to showcase who we are and what we do and of course celebrate our success with cake! We now await the results of this competition where we are up against another 5 Squadrons from across the organisation.

Just after our visit from Air Commodore Lewis we went along to Douneside House to collect the MacRobert trophy for winning the Wing Stage of the competition – this turned out to be a rather damp affair thanks to a yellow weather warning for rain. However, we didn't let that dampen our spirits as we lifted the trophy for only the second time.

The following weekend, we were back into more competition this time at the annual competition day at Gordon Barracks. The cadets enjoyed a day showing off their skills in air rifle shooting, aircraft recognition, banner drill and foot drill. and the Battle of Britain Memorial flight.

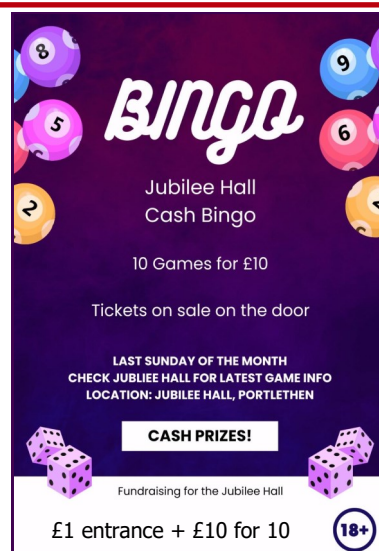
Summer camp this year was at RAF Spadeadam, where the cadets went on several section visits and took part in some adventure training. Other camps have included Gold First Aid, Space camp, Royal International Air Tattoo and most recently Regional Fieldcraft camp. All these camps help our cadets (and staff) broaden and deepened their knowledge of a wide range of skills.

Outwith these larger scale events, our cadets have also been busy across a range of other exciting activities, including:

- Air Experience Flying at Leuchars - Cadets took to the skies in April in the Grob Tutor aircraft, learning basic flying skills and experiencing aerobatics.
- Inter Squadron Athletics competition – taking other Squadrons on in different track and field events
- Skateraw fair – the local village fair where we have a PR stand with our flight simulator and we also help other stall holders and event organisers.

With a strong start to 2025, we look to continue the achievements and successes throughout the rest of the year!

We are always looking for more staff and cadets, so if the above sounds interesting and you would like to get involved, please contact us on 865@rafac.mod.gov.uk or follow us on Facebook at **865 (Portlethen) Air Cadets**.





It is great to be part of the community here in Portlethen! We have been encouraged to see more folks join us from week to week; with a growing and engaging kids group each Sunday, with new families and individuals joining in our Sunday worship, and a Tuesday toddler group that is bursting at the seams! If you have ever had questions about faith or wanted to explore church, you would be most welcome to join us.

Sundays at PCF

10:30am
Jubilee Hall

You are welcome!
A service with prayer, worship and a
message from the Bible.

We have plenty of time to connect
over tea and coffee and kids
activities are provided



Craft Group



Thursdays at 7pm
Porty Cabin

Tuesdays at 10am
Jubilee Hall

Join us to make crafts, learn new skills, have a blether and connection with others each week.

A group for parents, carers and toddlers to come and sing, play and snack together



We have been running regular events for youth and young adults in the last term, from Youth Alpha to Open Mic nights. If you are a teenager or young adult and want to explore faith – follow us on socials @portlethenchristianfellowship

If you want to connect or hear any more about what goes on you can email zak@portlethencf.com or check out our website

portlethencf.com



In May, our Scouts participated in MacTuff Really Muddy Aberdeen, raising £1500 to buy essential items for CFINE. This was their second charitable effort after previously supporting Portlethen Larder in the same way with food donations of £120 from Scout group funds. Eager to expand their impact, the Scouts chose CFINE, Community Food Initiative North East, which provides various services across Grampian. To learn more, they interviewed their development worker Sophie as part of their badgework. Some of the interview along with details on how to reach out to CFINE for assistance, can be read below. The full interview can be found on our Facebook page.

CFINE provide a variety of services and support. Our donation of 1,452 items - including food, toiletries, and pet food—exceeded our Scouts' goal and was distributed in food parcels throughout the city and shire to help those in need. CFINE estimated this equated to around 2,000 meals.

If you need assistance, support is available:

Emergency Food

CFINE's food bank (2-4 Poynerook Road, AB11 5RW) is open weekdays from 10am–3pm. No referral needed.

Welfare advice (Crisis Loans, budgeting, benefits)

Call 01224 531386, Monday–Friday, 10am–4pm.

Now on to the interview...

How do you help people? What are some of the things you help them with?

Access to food and skills development, finance education and wellbeing. Our aims are to improve health and wellbeing and the environment and tackle poverty. We help those who are disadvantaged on low income across the North East of Scotland.

How many people do you help per month? How many donations does that take?

500 + people per month across all services, food banks and community pantries.

How much food and products do you hand out each year?

The last year 600 families were supported. 28,000 separate visits to the pantries and 280,000 products being handed out. 45,700 food parcels were sent out to those in need.

What is the age range of service users you support?

Any age. Families, Individuals, Elderly, some babies and children through Child Smile group.

What impact has the increased cost of food had on the charity?

If people can no longer donate, total donations drop. Financial donations also buy less food, so food banks prefer direct food donations since money does not go as far.

What is the Pantry? How do people know where to find the mobile pantry/does it move about?

Community Pantries allow people to access food through an annual membership of £3, allowing access to a weekly shop for any 10 items for £2.50, usually around £20 value. Mobile vans take the pantry out across Grampian where there are poor transport links and limited fresh food availability. Locations rotate, advertising on social media/website/word of mouth.

How do you decide who can receive food or help from CFINE?

We provide support without asking personal questions, making it easier for people to access services like financial advice, health and wellbeing assistance, and food aid without stigma.

Can anyone work at CFINE?

Yes, you can volunteer for work experience or to give back to the community. While some staff are paid, most are volunteers, including people who previously used the services and now help others.

How do you decide what should go in each of the bags? Do you plan out ingredients for different meals? Do you do the shopping online or in-stores?

Food parcels vary based on stock and donations, aiming to include something for each meal: breakfast, lunch, dinner, dessert.

Shopping is done online for large amounts or in-store for small purchases to save on delivery fees.

Your HOPE programme supports prisoners being released from HMP Grampian. How many prisoners attend your workshops in the prison and how many of those do you see after they are released?

The Hope project supported 58 ex-offenders. The project helps with preparing for employment, securing housing, and establishing independence. Some participants also went on to volunteer for CFINE after their release from prison.

What do you do with the food that is donated but won't last very long?

Distribution is faster. For items like tins, packets, and bottles, expiry dates can sometimes be extended by 3 months.

What group of originations has donated to you the most?

The top donators are the Scottish government, Aberdeen City Council, and Aberdeenshire Council.

What other services do you provide other than access to food?

A range of services includes:

- *SAFE: Financial assistance to access eligible aid.*
- *8-week warehouse skills programme to boost employability.*
- *Mental health and wellbeing support available to all.*
- *Fareshare Grampian provides items to local foodbanks (e.g., Portlethen Larder).*
- *HOPE: Supports former HMP Grampian prisoners with reintegration.*
- *Budget cooking skills training for affordable meals.*
- *Fruit and veg distributed to businesses and homes via donation or delivery.*



Sophie presenting Scouts with
"Certificate of Appreciation"

Keep Scouting alive and well in and around
Portlethen
1st Portlethen Scout Group
Scottish Charity Number: SC032167



AUTOBODY REPAIR SPECIALISTS

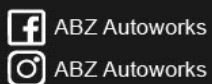


FAMILY RUN
20 YEARS EXPERIENCE
INSURANCE APPROVED

APPROVED PAINTS
TRAINED TECHNICIANS
BRANDED COMPONENTS



CONTACT US FOR A
NO OBLIGATION QUOTE



01224 084459
info@abzautoworks.co.uk
www.abzautoworks.co.uk

ABZ Autoworks Centre
Unit 1 Barclayhill Place
Portlethen
Aberdeen
AB12 4PF



Looking for new members

Are you maybe feeling lonely or isolated?



Would you like to meet new people for tea, coffee, cakes, as well as music and games, and lots of laughs?

The Young at Heart Group is just for people like you!

NO-ONE SHOULD FEEL ISOLATED



Come along and join this lively group of elderly members,
on Wednesdays 1.30pm -4.00pm
in the community room at Portlethen Academy

We also have two outings per year (Summer and Christmas).

Don't worry about getting there - the Community Ambulance is available to collect you and return you home.

For more information, contact Gordon Good on
01224 966547 or email

thehappygoods57@gmail.com



.. Or just turn up. You'd be made most welcome!!



Portlethen Financial Services

Mortgage Brokers | Financial Advisers | Later Life Lending

Unit 14 The Green, Berrymuir Road, Portlethen, Aberdeen, AB12 4UN
Telephone: 01224 784030 | info@portfs.co.uk | www.portlethenfinancial.co.uk



- | | |
|------------------------|----------------------------|
| *Mortgage | * Remortgage |
| * Buy to Let | * Self-Build Mortgage |
| * Additional Borrowing | * First Time Buyer |
| * Equity Release | * Retirement Interest Only |
| * Life Insurance | * Critical Illness Cover |
| * Income Protection | * Mortgage Protection |

**To arrange a review of your mortgage needs and life insurance
get in touch: email info@portfs.co.uk or call 01224 784030**

Impartial & Unbiased advice for all your mortgage and insurance needs

Your property may be repossessed if you do not keep up repayments on your mortgage

Equity Release refers to home reversion plans and lifetime mortgages. To understand the features and risks, ask for a personalised illustration

For Equity release advice we will charge a fee of £495, and we will also receive commission from the

**TREAT YOUR CARPETS AND SUITE
AND HAVE THEM**



CARPET & UPHOLSTERY CLEANING
INDEPENDENTLY OWNED
& OPERATED
DOMESTIC & COMMERCIAL
Est 1995

Always using premium products for the best possible results.

All carpets pre-sprayed, sanitised/deodorised and spot and stain removal applied where and when possible.

All carpets and rugs raked or brushed for aeration and presentation

Coasters are used where and when needed.

See reviews and pics:

Google, Yel.com, Facebook
Allkleenaberdeem.co.uk

Contact us:

Tel: 07836 248022
Email: allkleen@hotmail.co.uk
Fb Messenger, WhatsApp



BON ACCORD

Chiropody



SUSAN DUNCAN
MSSCh MBChA

20 North Silver Street
Aberdeen, AB10 1RL

Home Visits and Evening
Appointments Available

Telephone 01224 783552
Or 07946 507623

Registered member of the British
Chiropody and Podiatry Association

Nearly there!

**Don't forget to
read and complete
the Local Place
Plan Survey**

starting on page 73

**Then pull out pages
73-76,
pop them in an
envelope and through
the Jubilee Hall
letter box**

Thank you



K6 KABs

**Wheelchair Access
General Taxi Runs
Contracts**

Tel 07747 200662



SCOTT TURNBULL TILING

07718 927758



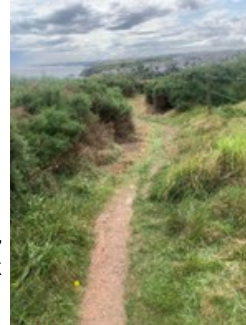
PLATINUM JUBILEE COASTAL PATH PROJECT

Recent News from the Aberdeenshire Coastal Path

After a few outings exploring possible coastal path routes, the Aberdeenshire Coastal Path Volunteer group has recently been out doing vegetation clearance on the path around Cran Hill by Newtonhill. The path group uses hand tools - scythes, loppers, shears etc - to keep the path clear of the summer growth. While this is hard work; it is also environmentally more friendly and certainly more satisfying.



Start of the day - plenty to do!
Scythes waiting in the background



Much clearer now! This should last the season,
but we will need to check and come back
..... but not until next year, with luck!

There's still plenty to do.
We will be back out soon, we hope!

If you are keen to learn more about volunteering, the development of the Aberdeenshire Coastal Path, or the recently formed North East Scotland Coastal Trust, please sign up for our Quarterly Update - due soon:

platinumjubileecoastalpath@gmail.com

Caspar, Luke and James
Project Officers
Platinum Jubilee Coastal Path Project



Local Place Plan Survey

The Portlethen & District Community Council is committed to ensuring that Portlethen remains a vibrant, inclusive and sustainable place to live, work, and play. In line with the Planning (Scotland) Act 2019, we are developing a Local Place Plan that reflects what matters most to you - our residents, local businesses, and community groups.

Your insights will help us identify priorities for:

- Community facilities and amenities
- Green spaces, parks, and play areas
- Transport links, walking routes, and cycling paths
- Housing, development, and design quality
- Local economy, skills, and employment opportunities

By sharing your views, you'll help shape projects and policies that affect day-to-day life in our area.

The survey takes around 10–15 minutes to complete and is available here in the Clochandighter (*can be torn out and dropped off in an envelope through the Jubilee Hall letterbox*) or online on the PDCC Facebook page or via the QR code below.

All responses are anonymous and treated in confidence. We'll use aggregated findings to draft the Local Place Plan. The survey closes on October 22nd. After the survey closes, we'll:



1. Analyse responses and identify key themes.
2. Host a public workshop to discuss draft recommendations.
3. Finalise and publish the Local Place Plan by April 2026.

Your feedback will directly inform funding bids, planning applications, and community-led initiatives over the next decade.

Thank you for taking the time to help us build a stronger, more connected community.

P.T.O.>>

Portlethen Local Place Plan Community Survey – Page 1

This survey gathers community input to help shape the future of Portlethen through the Local Place Plan. Learn more about Local Place Plans on

<https://www.ourplace.scot/home/local-place-plans>

About You

1. What is your age group? (circle only one option)

- ☐ Under 18 ☐ 18-24 ☐ 25-34 ☐ 35-44 ☐ 45-54 ☐ 55-64 ☐ 65+
☐ Prefer not to say

2. What is your connection to Portlethen? (circle all that apply)

- ☐ I live here ☐ I work here ☐ I study here ☐ I own a business here
☐ I visit regularly ☐ Other:

3. Which part of Portlethen do you live in (if applicable)?

Review of 2019 Community Action Plan

4. Do you remember the 2019 Community Action Plan (CAP)? (circle only one)

- ☐ Yes, I'm familiar with it
☐ I've heard of it, but don't know the details
☐ No, I don't know about it

5. Do you still agree with the following priorities from the 2019 CAP? (tick one answer per row)

Topic	Strongly agree	Agree	Neutral	Disagree	Strongly disagree
Improve local paths and cycleways					
Develop more community events					
Enhance green spaces and parks					
Support local businesses					
Improve public transport links					
Create more youth activities					

6. How important are the following specific actions today? (tick one answer per row)

Topic	Very important	Important	Neutral	Not important
Improve local paths and cycleways				
Develop more community events				
Enhance green spaces and parks				
Support local businesses				
Improve public transport links				
Create more youth activities				

7. Do you feel progress has been made on these priorities since 2019? (tick one answer per row)

Topic	Yes	Somewhat	No	Not sure
Improve local paths and cycleways				
Develop more community events				
Enhance green spaces and parks				
Support local businesses				
Improve public transport links				
Create more youth activities				

P.T.O.>>

Portlethen Local Place Plan Community Survey – Page 2

Looking ahead - Local Place Plan

8. What are the top 3 things you would like to see improved or developed in Portlethen over the next 5-10 years?

9. Which of the following areas should be a priority in the Local Place Plan? (Please circle up to three areas)

- ☐ Housing, Transport and connectivity
- ☐ Environment and green spaces
- ☐ Community facilities
- ☐ Local economy and jobs
- ☐ Health and wellbeing
- ☐ Youth and education
- ☐ Arts, culture, and heritage
- ☐ Other (please specify):

10. Do you have any other comments or ideas for the future of Portlethen?

Thank you for completing our survey. Please pop it through the Jubilee Hall letterbox or fill in the online form (via the QR code).

Portlethen & District Community Council

Useful Addresses and Phone Numbers

Bourtree Hall

Booking Secretary
Angelene McKay
Tel: 01224 782734

Bourtree Pre-School Group

Bourtree Hall
Berrymuir Road
Tel: 01224 782472

Family Resource Centre

Portlethen Academy
Bruntland Road
Tel: 01467 537111

Fishermoss School

Berrymuir Road
Tel: 01224 472875

Franciscan Missionaries

16 Dunvegan Avenue

Hillside School

Newlands Drive
Tel: 01224 472850

Homestart

32 David Street
Stonehaven
Tel: 01569 767773

Jubilee Hall

Booking Secretary
E: Jubileehallportlethen@gmail.com

Portlethen Academy

Bruntland Road
Tel: 01224 782174

Portlethen Church Office

Tel: 01224 782883

Portlethen Library

Portlethen Academy
Bruntland Road
Tel: 01224 472870

Portlethen Medical Centre

Old Portlethen Road
Tel: 0345 0130720

Portlethen School

Cookston Road
Tel: 01224 472845

Post Office

Morrisons Daily
Unit 4-5
The Green
Berrymuir Road
Tel: 01224 783752

Social Work Department

Portlethen Academy
Adult Services
Tel: 01569 690532
Children's Services
Tel: 01467 537111

Swimming Pool and Academy Sports Facilities

Oak Drive
Tel: 01224 472873



Advertisers' Quick Reference



AFRICAN-CARIBBEAN CASH & CARRY

Afrimart UK	01224 032061
-------------	--------------

ARCHITECTS

Ewen Buchan	01224 969600
Groundwater Architectural Design	01224 782035

CAR VALETING SERVICE

Abersheen Valeting	07783 191797
--------------------	--------------

ELECTRICIAN & ELECTRICAL CONTRACTOR

SK Electrical	07843 236630
---------------	--------------

ESTATE AGENT

Balfour Manson	01224 784855
----------------	--------------

GARAGE SERVICES

Badentoy Garage	01224 054994
Coull Cars Ltd MOT	01224 781888
Custom Tuning	01224 954061
Lethen Motors Ltd MOT	01224 781158

LANDSCAPE GARDENER

Bonnie Landscapes	07504 782322
-------------------	--------------

PAINTER & DECORATOR

Michael Morton	07809 896151
----------------	--------------

SLATER

S Milne Slating Services	01224 950925
--------------------------	--------------

SOLICITOR

Balfour Manson	01224 784855
----------------	--------------

TAXIS

A2B Taxis	Murray -	07525 471063
K6 KABS	Gordon -	07747 200662

FULL PAGE (Colour)	£200.00
HALF PAGE (Colour)	£100.00
QUARTER PAGE (Colour)	£ 55.00
FULL PAGE (Black & White)	£ 90.00
HALF PAGE (Black & White)	£ 50.00
QUARTER PAGE (Black & White)	£ 25.00

ADVERTISERS' QUICK REFERENCE* £ 5.00
***available only to those with full advertisements**

Favourable comments received about work done by advertisers are
 acknowledged by a rosette in their advertisement

Note to readers:



Advertisers can only be awarded a ROSETTE if they
 are nominated by YOU.

If you feel that they should have a Rosette, please
 email

clochandighter.editor@gmail.com



Articles

Do you have something the Community should know about?

Do you have something of interest you would like to share?

Then what are you waiting for?

This is YOUR magazine, so just send it to:-

clochandighter.editor@gmail.com

**CLOSING DATE FOR
 THE WINTER EDITION IS
 15th OCTOBER 2025**

Laws Tyres

www.laws-tyre.com

Tyres & Exhausts : Brakes
Alloy Repairs : TPMS Repairs
Suspension Replacement etc

MOT?

Clochandlighter Special*

Subject to availability at our MOT Station at Laws Tyres Altens

BOOK NOW on 01224 230750 QUOTE CLOCH24



£30

FREE

Drop off service
Loan Car Available
Tea and coffee
Wifi

CALL US NOW on
01224 230750
Altens Branch