

CLOCHANDIGHTER

Portlethen's Community Magazine

EDITION 128 – Summer 2026



**Portlethen and District Men's Shed
new home**



Charity No. SC000123

ROBERT GORDON'S COLLEGE
1418 St Andrew's Place
1ST XV RUGBY
H SCHOOLS SHIELD FINAL 2025

ROBERT GORDON'S COLLEGE

There is no limit to what you can achieve.

Apply online now for August 2026 entry.

Independent co-educational day school for children aged 3 to 18 years.



ATHLETIC EDGE



Editorial



Welcome to the Summer edition of your Clochandigher! There's always a lot going on in the Summer, but here I shall keep it local with a few dates for your diaries:

- Saturday, 20th June (10am-1pm) - Fishermoss Summer Fayre
- Sunday, 21st June (11am - 2pm) - Portlethen Market
(further dates to be found on page 30)
- Saturday, 27th June (times TBC) - Portlethen Primary Summer Fayre
- Saturday, 27th June (times TBC) - Skateraw Fair

On the subject of the Porty Market, did you know that there are two free spaces every month open to children's and adults' community groups for fundraising/advertising services? These, apparently, are rarely used. The email to contact if you would like to make use of this opportunity, or to hold a business stall (for which the fee is *not* waived), is Portlethen.market@gmail.com.

This edition, I have added a new page, which may be of help to some people. It is a list of emergency numbers. I am certain that I have not covered everything, and would welcome your feedback (on the email below), including any other phone numbers which you feel appropriate, but you will find the "Work in Progress" list on page 76.

There is a heartfelt plea on page 73, written on behalf of a disgruntled patient, regarding the correct use of Blue Badges in the dedicated parking spaces at the Medical Centre. Please take a look and familiarise yourself with the rules.

On a related topic, that of medical supplies being delivered to the homes of those unable to get to the pharmacy themselves, I have also been asked to sing the praises of the Michies' drivers, but most especially Robin Ripley. He has been a stalwart of this voluntary delivery "team" for many years, going out in all weathers to make sure the medications reach patients. A very big thank you for all you have done and we wish you a long and happy retirement!

And finally, our very own Leathen pub were this year awarded Best Pub in the East *and* Best Dog Friendly Venue of the Year at the Scottish Entertainment and Hospitality Awards ceremony. Well done to you all!

Alison Lloyd-Wiggins - Editor

Email the Clochandigher on clochandigher.editor@gmail.com





CENTRAL HEATING SPECIALISTS

Established in 1982

We have the expertise to ensure that you receive nothing but the best service



- Fully Fitted Bathrooms ~ all trades catered for
 - Central Heating Systems
- Boiler Installations with Energy Saving Controls



Reg No 6

For free estimates contact Ian Cruickshank
Tel 07850 780001 Email contact@candn.uk.com



www.candn.uk.com



MARK MILNES



Painting and Decorating Services



- ◆ Interior and Exterior
- ◆ Wallpaper Hanging
- ◆ Quality Products with a Quality Finish
- ◆ Professional and Reliable Service

FREE ESTIMATES

FOR COMPETITIVE RATES, PLEASE CALL

07793 677908

Email: mark.milnes@hotmail.co.uk



ROTWISE®

- **Woodworm** • **Dry & Wet Rot** • **Damp Control**
- **Water / Flood Damage** • **Insurance Work**
- **Cornice Work** • **Plastering**
- **30 Year Guarantee**

Local family owned company specialising in timber preservation and dampness control.

Call or email to organise your free survey.

• 01224 211999 • info@rotwise.com

35 York Place, Aberdeen, AB11 5FW

COULL CARS

HILLSIDE, PORTLETHEN

THE LOCAL NAME YOU CAN TRUST

- MOT's
- Servicing & repairs
- Tyres
- Brakes, exhausts & clutches
- Diagnostic equipment



BOOK NOW

01224 781888

contact@coullcars.co.uk

[facebook.com/coullcars](https://www.facebook.com/coullcars)

Free collection from this area

Councillor Catherine Victor



Hi all, it's been a busy few months since I last wrote a post.

Here are some highlights:

Firstly a visit to the Solstice Nurseries out in Banchory Devenick. I was greeted by Iona, George and Jackie. After a much-needed cup of coffee, they took me on a tour of the Nursery. They grow all sorts of plants in their poly tunnels there, to supply Landscape Gardeners from all over the Northeast. Their main goal is helping mentally-challenged people find their feet again. I met a few on the day, all working away to keep the plants healthy and keep the place tidy. They are recommended for a position in the nursery by Mental Health advisers such as their GP or Health worker or the NHS department for mental health in Aberdeen. Some have worked there for many months while others come and go on shorter visits. They are all benefiting from being close to nature and working with their hands. I left there feeling uplifted and look forward to another visit soon.

The other news was not so welcome. Banchory Devenick Primary has had to close due to excessive repairs required to the boiler and other areas. There were 25 children attending the school at the time, but around 50% came from outside the catchment area. The Council arranged a consultation night with the parents, to explain the situation, and it was a very emotional meeting. Most children have transferred to Lairhillock, although the Council's preferred school within the cluster was Fishermoss in Portlethen. The Council were, however, accommodating regarding the parents' wishes, and the children are now enrolled in their preferred school. It is sad to see a rural school close but, on this occasion, I do not think there was an alternative. There will be a consultation night in the Portlethen Academy, open for all to attend, on 14th June at 7.00pm (I think) but check that before you go along. Unfortunately, I cannot be there that night but some of the other councillors will attend.

There has also been consultation of 'safe walking routes' to school going on all over Aberdeenshire. The Council is looking to reduce the requirement for school transport if it is deemed safe to walk and within the designated millage. One route that they concluded was safe was the Checkbar to Portlethen Academy road. I have lodged my reservations on that route unless there are safe crossings provided at the two roundabouts that must be crossed, especially the one coming off the A92 approaching Portlethen/Findon etc. I was supported in my recommendation by the parents, so we will see if we are successful in getting the necessary crossing established.

I also visited the Men's Shed in their new accommodation at Rowanbank. Early days yet but I look forward to seeing the progress they will make in the weeks to come. They have the space now to fully utilise all the talent in the group. Once they are settled, other groups will be able to join them, and I look forward also to creating a gallery of memorabilia from Fred Stewart's collection of photos etc., depicting historic events and people from the area. Exciting days ahead.

These were some of the important things going on that affect Portlethen and District. Until next time, my contact is cllr.c.victor@aberdeenshire.gov.uk.



Happy Soles
Foot Health Care by Angela


Need Help With Your Foot Health?

Professional & Compassionate Foot Care Services

- ✓ Qualified FHP
- ✓ Nail Trimming
- ✓ Corn & Callus Removal
- ✓ Diabetic Foot Care
- ✓ Fungal Nail & Foot Treatment

All In The Comfort Of Your Own Home


 **07599 735067**



**A2B TAXIS
PORTLETHEN
07525471063**




- **Luxury taxi**
- **Airport and Hotel Transfer**
- **rail & ferry transfer**
- **local & long distance**
- **Sightseeing tours**
- **vip work**
- **corporate accounts**
- **card payments available**

BOOK NOW  **07525 471063** 



mark shaw

FUNERAL SERVICES

For all styles of funeral,
whether traditional,
modern, or direct cremation.
Whether now or planning for the future.

If you'd like more information
you can email us at care@shawfunerals.co.uk
or visit our website www.shawfunerals.co.uk

347 George Street
Aberdeen, AB25 1EQ
Tel: 01224 640008

26 Abbotswell Crescent
Aberdeen, AB12 5JW
Tel: 01224 876000

Muirend Road
Portlethen, AB12 4NX
Tel: 01224 876000



GOLDEN CHARTER
FUNERAL PLANS



NATURAL DOG TREATS
BAILEY'S BITES



**PICK N MIX
SUBSCRIPTION BOXES
TREAT BOXES
ONLINE AND
CUSTOM ORDERS**



WWW.BAILEYS-BITES.CO.UK
F: @BAILEYSBITESABERDEEN
I: @BAILEYSBITESABZ
MANDY@BAILEYS-BITES.CO.UK
07795113655
PORTLETHEN, ABERDEENSHIRE




ELECTRICAL SERVICES

Expert Electrical Solutions for
Your Home and Business!

OUR SERVICES:

- ✓ Indoor & Outdoor Lighting
- ✓ Rewiring & General Repairs
- ✓ Fuse Board Upgrades
- ✓ Sockets & Switches

CONTACT US ☎ 07843 236630 🌐 www.skelectricaltd.com



What's Been Happening in Portlethen?

Where is the time going this year? It feels like we've only just packed away the winter coats, and already there's so much happening around Portlethen!

First off, a big thank you to Ken and Kay Watson for all their hard work sorting out the town's wildflowers. If you've been out and about, you'll have noticed the lovely splash of colour — they've really helped brighten the place up.

There's also something exciting to look forward to this Summer. The Portlethen Gala is back on 8th August 2026 at Bourtree Park, running from 12–5pm. This year's theme is Circus, so expect plenty of fun, laughter, and maybe even a few surprises along the way. Definitely one for the diary!

On a more practical note, a new defibrillator has now been installed in the old phone box on Cookston Road, just opposite the shops. It's a great addition to the area and could make all the difference in an emergency.

You might also have spotted the brand-new welcome signs as you come into the village. They're a lovely touch and give Portlethen a warm, friendly feel right from the start.

Meanwhile, the Fine Piece Café at the Jubilee Hall continues to go from strength to strength. It runs every Wednesday from 10am to 12pm and has become a real hub for the community. A big well done to Julie and the team for all their hard work—it's clearly paying off!

And finally, if you've got a bit of spare time and fancy getting more involved, there are always opportunities to volunteer locally. It's a great way to meet people, support the community, and make a difference—so don't be shy about getting in touch.

All in all, there's plenty to be proud of in Portlethen. It's the people that make the place, and it's great to see so many pitching in and keeping things going strong.

Darren Robertson,
PTA Chair



Change



Heritage



Strength & Unity



Unending

Clochandighter Accounts

Transactions in the quarter to 30/04/26

	Credit	Debit	Balance
Balance b/fwd 31/01/26			£12,371.74
Advertisers	4,290.00		£16,661.74
Winter & Simpson Printers		-3,433.00	£13,228.74
Santa Run donation		-256.62	£12,972.12
Postage		-32.00	£12,940.12
Bank Charges		-12.75	£12,927.37
Donation to Gala 2026		-1,000.00	£11,927.37

SOUNDS BURRILIENT



AV INSTALLATIONS

SATELLITE & AERIAL; Installations /Service calls
FLAT SCREEN TELEVISION ; Installations & Wall mounting
HOME CINEMA SYSTEMS, Designed, supplied & installed
CCTV SYSTEMS ; Designed, Installed & Maintained
AUTHORIZED DEALER : Sonos, Monitor Audio, Sonance ,etc.
 & More
 Domestic and commercial work



Tel :07762069425

E-mail: info@soundsburrilient.co.uk

WEB : www.soundsburrilient.co.uk

www.facebook.com/soundsburrilient.homecinema

Portlethen Library

If you're into it,
read into it.

Discover your local library

GO
ALL
IN.

Step into the library and let your summer adventure begin.

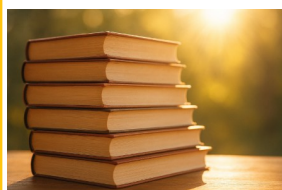
This year, we are proud to announce the theme of the Summer Reading Challenge is READ supporting the National Year of Reading 2026.

From Monday 1st June to Monday 31st August, the library will come alive with this exciting challenge encouraging everyone to keep reading, exploring, and imagining all summer long.

Whether they love magical adventures, mysteries, comics, or non-fiction, ebooks or audio books there is something for every reader on our shelves. The challenge is open to all ages just collect your card at the library and get reading.

Summer at the library is about more than books. Our Summer of Play programme combines reading with creativity, exploration, and hands-on fun. Throughout the summer, children can enjoy storytelling sessions, craft workshops, themed challenges, games, and treasure hunts that bring books to life in exciting new ways.

Families are invited to join the adventure too. Parents, carers, grandparents, and siblings can all take part in summer activities, making the library a place to connect, share stories, and enjoy quality time together.



This summer, READ, play, and explore with us at the library. From Monday 1st June to Monday 31st August, join the Summer Reading Challenge and discover a season packed with stories, creativity, and adventure.

For more information visit our website

www.livelifeberdeenshire.org.uk or our Facebook page:

<https://www.facebook.com/PortlethenLibraryAberdeenshire>

CAROL

MOBILE MASSAGE
& REFLEXOLOGY



"I'm qualified to HNC level in complementary therapies and fully insured"

Express Facial with Back, Neck & Shoulder Massage - 60mins, £50

A relaxing back massage to ease away tension followed by a lovely facial which includes a double cleanse, exfoliation, mask, scalp massage and moisturiser all tailored to your skin type.

Relaxing Facial - 60mins, £50

A relaxing facial which includes a double cleanse, exfoliation, facial massage, mask, scalp and hand massage & moisturiser all tailored to your skin type.

Swedish Massage - Full Body 60mins, £60

Restores balance and eases tension in the soft tissue and muscles.

Aromatherapy Massage - Full Body 90mins, £80

A very relaxing massage using essential oils blended specifically for you.

Back, Neck & Shoulder Massage - 30mins, £30

A relaxing stand-alone treatment or can be an add-on treatment.

Hot Stone Massage - Full Body 60mins, £60

Using warm basalt stones to completely relax any tension away.

Reflexology - 60mins, £60

Using gentle pressure on the reflex points on the feet to help the body's own healing process.

Cupping Therapy - 30mins, £30

Targeting specific areas of the body to promote healing.

10% Discount
on any 1 hour treatment
Just quote Clochandighter

Call or Text
07731629116



Portlethen Moss Conservation Group

Registered Scottish Charity No - SC040350



Our Group's Projects - Portlethen Moss, Portlethen Community Woodland, & Community Wildlife & Sensory Garden

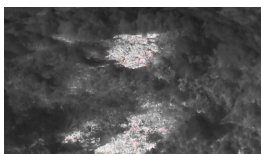
Portlethen Moss – Local Nature Conservation Site (LNCS) We need your help to stop fire raisers in 2026

Sadly, after the terrible fires on the moss last year, lessons have not been learned, with fires being made in dens as early as April.

At time of writing, we are in the process of ordering 'High Fire Alert' signs which will be opened at times when there's periods of high fire risk; we will also post on social media to alert the community.

If you are in the moss or live nearby, and witness evidence of fire starting, please alert the police/fire service. Fire destroys the fragile habitat on the moss and the wild-life it supports.

Below are drone pictures captured after the fires last year where you can clearly see the extent of the fire damage. Also see the infrared image at night where the glow of the heat in the peat is clearly visible; fanned, this could easily reignite.



*Daytime & infrared images of
the areas damaged by fires
in 2025*

Our group, in partnership with the Kincardine & Mearns Ranger, are carrying out peatland restoration which helps stop the peat from drying out, this preserves the peat so it can continue to store carbon and makes it less likely to catch fire. If you'd like to learn more and/or get involved, the Ranger is organizing an event to mark NE Climate week later this year. Keep checking our Facebook page for information.

Community Woodland

During winter when all the trees were bare, it was clear to see the remnants of last years bird nests. Beautiful big chunky wood pigeons can be seen wandering around and flying into the trees which is a real sign that the young woodland is maturing nicely. The chiffchaffs arrived in March; they're lovely small brown birds that emigrate here from Africa every year to breed. They're easy to identify by their call which tells you who they are by repeating 'chiffchaff, chiffchaff'. Willow and sedge warblers also arrive in April and occasionally a grasshopper warbler will stop to rest for a few days before moving on.

Our group continues to care for the WW1 Memorial Orchard and increase biodiversity there which helps attract pollinators to the fruit trees and bushes. At time of writing, we're planning to reinforce the grass entrance to the orchard as it is becoming worn with footfall.

If you'd like to help please message us on our woodland Facebook page.

Community Wildlife & Sensory Garden

In April, we created 2 new sensory beds. Thanks to Nescan Seed Fund, which went towards purchasing 48 lavender plants, topsoil and grit. Thanks to Aberdeenshire Council for the logs they kindly delivered for us to use as sustainable edging.

In early spring we planted 18 wild roses gifted to us by Greenspace Aberdeenshire, once established they will create a great source of nectar and food for wildlife and of course will be there for visitors to the garden to admire.

It's still early days, as the garden is just in its third year and will take quite a few years for things to mature. But the promise of what's to come is there to be seen and we're delighted that so many members of the community appreciate and visit the garden.

It's always lovely to see Bourtree Nursery and Fishermoss School regularly visiting the garden. If you've not made it along to visit it yet, please do especially in Spring and Summer, but please remember the flowers are for the pollinators so please don't pick them.

Again, if anyone would like to be involved contact our Facebook page.

If you wish to know more about the group or if you want to become a member (new members are always very welcome) please do not hesitate to contact us through our Facebook page or at one of our events. Being a group member is neither onerous or time consuming; we have 'hands on' events throughout the year that everyone is welcome to take part in. It's very rewarding, you can see the results of the work we do, and you know that you're doing something really positive for our local environment.

<https://www.facebook.com/portlethenmoss>

<https://www.facebook.com/PortlethenWoodland>

Please help us raise funds for these community projects each time you shop online, at no cost to you whatsoever. You'll be amazed at how many businesses support this.

<http://www.easyfundraising.org.uk/causes/portlethenmossconservationgroup>

<http://www.easyfundraising.org.uk/causes/portlethenmossconservationgroup>

Helping Our Endangered Hedgehogs

www.facebook.com/HedgehogsofPortlethen

British hedgehogs have declined by between 30-75% in rural areas since 2000.



The importance of water!

By June, the hedgehog breeding season is well underway. These rare and elusive mammals are in serious decline and need all the help we can give them – remember they're not pests or rodents! They're the gardener's friend, they will feast on all the bugs that like to eat your plants.

A shallow bowl of water can be lifesaving for a thirsty hedgehog after a long day in a hot nest during summer.

Hedgehogs need to drink lots of water and can't travel far to find it like birds can – if there's no puddles, then there's no water for hedgehogs. If they can't find water, they become dehydrated, then can't eat and it's a fast downward spiral from there.

You can also help them survive by providing dry kitten kibble, wet cat or dog food, these foods provide everything they need. Be wary of some commercially-produced foods sold as hedgehog food as they're unregulated and often contain things that are actually harmful to hedgehogs. Keep it simple kitten kibble, wet cat or dog food, water and nothing else.

The nights are short and they will venture out at dusk before its very dark and still be active at dawn as it's starting to get light – this is normal, they're making the most of the short nights.

However, if you see one out in the middle of the day it's a red flag... hedgehogs are nocturnal and only venture out in the middle of the day when they are poorly. As prey animals they will hide illness as a survival mode, so don't be fooled, if you see one eating, drinking and moving around out in the midday sun, its poorly. They never sunbathe and seeing a hedgehog lying out in the open is a sign that the hedgehog is very ill. There is only one exception in summertime and that's when a mother hedgehog may venture out, but to see this is very rare so please don't assume, always seek expert advice.

What can you do to help a hedgehog out in the day?

- **Contain it in a high sided box with something it can hide under – e.g. an old towel or some newspaper**
- **Place it somewhere safe and quiet**
- **Call your nearest rescue for advice right away, never try to look after it yourself it will die, don't wait to see if the hedgehog 'recovers' and if it's trying to get out of the box it still doesn't mean it's ok. Hyperactivity is another sign of illness (see contact details for the NE rescue New Arc below)**

A hedgehog out in the day is not ok so if you see one, no matter how well it may look, 99.9% of the time it's a very poorly hedgehog and needs containing in a high sided box while you call **The New Arc** for advice **tel: 01358 701723**.

Check out the Hedgehogs of Portlethen & Surrounding Area Facebook page where there's lots of information, use the search tab to look for information and if you don't find the answer you need send a message directly.

We are not a rescue, but can advise on how to help hedgehogs



Tel: 01224 950925
Mob: 07432 272893
Smilne.slating@gmail.com

For all your roofing needs look no further than
S Milne Slating Services.

We carry out the following works:

Slating, tiling works.
Gutter cleaning, repairs and renewals.
Harling/Roughcasting all cement works.
Felt flat roof renewals and repairs.

Free estimates available. Emergency call out service.

All of our works are guaranteed.

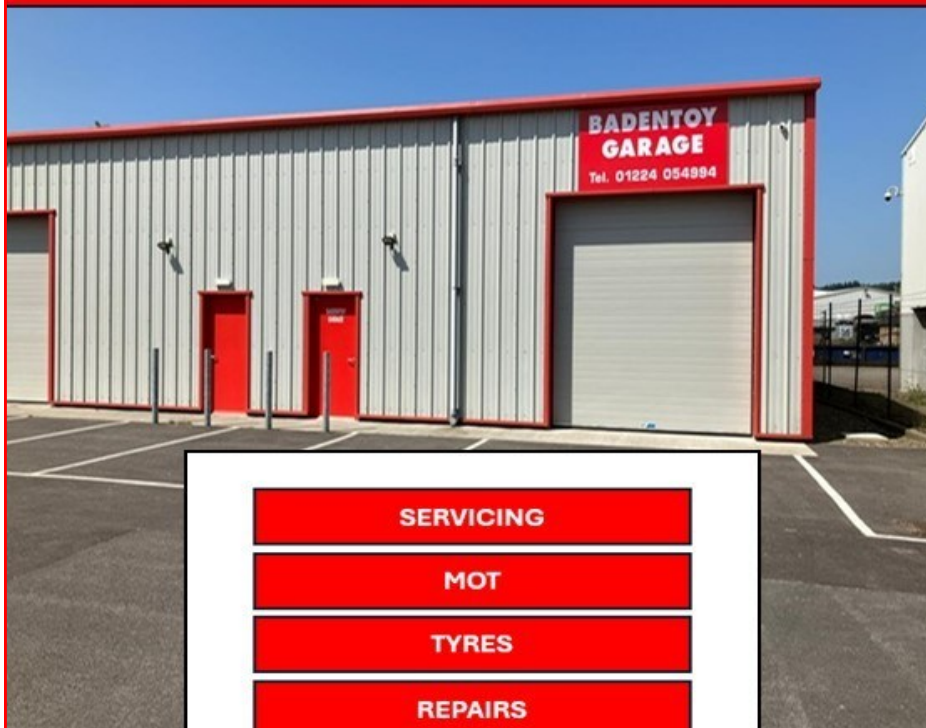


Badentoy Garage

Phone: 01224 054994

Web: <https://badentoygarage.co.uk>

Mail: info@badentoygarage.co.uk



SERVICING

MOT

TYRES

REPAIRS

DIAGNOSTICS

Address: Unit 4, Saltire Business Park, Badentoy Avenue,
Portlethen, AB12 4YB

THE LEATHAN

LOCAL COMMUNITY PUB
Always a Warm Welcome



Sky Sports, BT Sports, Premier Sports, Pool, Darts, Live Music, Discos & Dog friendly

Fresh, Homemade food served every Thursday - Sunday, 12:30pm till 7:45pm
Takeaways available



Our Lounge is Available For Private Hires and Funeral Teas. To Make a Booking, Call us on 01224 784423



The Leathan, Cookston Road, Portlethen, AB12 4PT

BONNIE LANDSCAPES & SHEDS

Fencing Patios Paths Gravel Turfing

6 x 4 Sheds (custom sizes also available)

Contact John – mobile: 07504782322

Email: bonnielandscapes@yahoo.co.uk

The background of the advertisement features a dark night scene of a house with a red cherry picker extending to the roof. On the left, there is a circular inset showing a well-lit interior of a lounge or dining area with several chairs and tables.

PRESTIGE DECORATORS

Domestic & Commercial Painters & Decorators
07763 675122
info@prestigedecorators.com
www.prestigedecorators.com



GROUNDWATER ARCHITECTURAL DESIGN

We have over 35 years' experience working with individual and corporate clients on a number of small, medium and large architectural projects throughout the northeast

- Free initial consultation • Full design service • Building consents obtained •
- Extensions and alterations • Conversions • New builds

Mob: 07783148045

Email: info@groundwaterdesign.co.uk

www.groundwaterdesign.co.uk

CT GARAGE & TUNING SERVICES
CAR GARAGE

NEW LOCATION IN THE PRIME CENTRE OF PORTELTHEN

Unit 1 Barclayhill Place, Portlethen, AB124PF



OUR SERVICE

- MOTs
- Diagnostics
- Services
- Tyres
- Exhausts
- Batterys
- Brakes /Clutch's
- Remapping/Tuning
- Rolling Road Dyno
- Underbody Protection
- Tracker/Immobilizers
- DPF Cleaning
- Wheel Alignment
- Performance Parts

CONTACT US

01224 547486
contact@ct-garageservices.uk



PORTLETHEN'S PLACE TO EAT

BREAKFAST

- 8 Items **£6.80** (Served Until 11.30am)

Bacon, Sausage, Tomato
Egg, Black Pudding,
Hash Brown
Potato Scone & Beans.

HOT FILLED ROLLS

Bacon	£3.50
Sausage	£3.50
Lorne	£3.50
Egg	£3.00
Black Pudding	£3.50
Extra Item	80p

CHIPS

Chips	£3.00
Chips & Cheese	£4.00
Chips & Gravy	£4.00
Chips & Curry Sauce	£3.40
Chips Cheese & Gravy	£4.20
Chips Cheese & Curry Sauce	£4.20

COLD FILLED ROLLS

BLT	£3.60
Cheese	£3.00
Ham	£3.00

BURGERS

1/4lb Beef Burger	£4.00
1/4 Cheeseburger	£4.50
Bacon Burger	£4.60
Bacon Cheeseburger	£5.00
Chicken burger	£4.60
Veggie Burger	£4.00
Hot Dog	£3.60
Extra Burger	£1.80

EXTRAS

Softie	60p
Chilli Mince	£1.60
Cheese (slice)	60p
Soup	£1.80

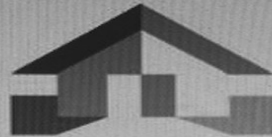
DRINKS

Tea	£1.50
Coffee	£1.60
Hot Chocolate	£1.50
Decaff Tea/Coffee	£1.60
Cans	£1.20
Flavoured Water	£1.00
Water	£1.00
Cartons	80p
Fresh Orange	80p

SWEET TREATS

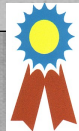
Sweet Treats	from £1.00
Cakes	(as priced)
Crisps	80p

Portlethen's Place to Eat - Retail Park, Muirend Road, AB12 4XP
Open Tuesday to Saturday 9.00am - 3.00pm (Closed on Sunday)
Phone orders welcome Call: 07583 703105 (Please allow at least 20 Minutes for your order).



Rapid Roof Repairs & Property Maintenance

t:07731962456



67 Bruntland Court,
Portlethen,
Aberdeen,
AB124UQ

t :07731962456

t: 01224784743

local tradesman with 30 years experience

**Slating, Tiling, Repointing, Flat roofs,
Guttering, Velux windows, UVPC cleaning,
Chimney repairs, Harling, Roof cleaning,
Grass Cutting and garden maintenance,
Fencing, Power washing and Painting**



**SPECIALISING IN BATH & SHOWER ROOMS
IN AND AROUND ABERDEEN FOR THE LAST 20 YEARS
I PROVIDE MY OWN TEAM OF TRADESMEN
WITH EXCEPTIONAL SKILLS & HIGH STANDARDS
TO DELIVER ONLY THE BEST WORK POSSIBLE.**

LOCAL, PROFESSIONAL & RELIABLE

**JOHN S THOMSON
TEL: 07825917605**





Portlethen Community Allotment

Welcome to our latest newsletter, with the new season in full swing on our site.

Members are now working on their plots to plant new crops and improve their own area with more raised beds and infrastructure.

Our membership continues to rise, and we have over 400 members and 40 or so plot holders.

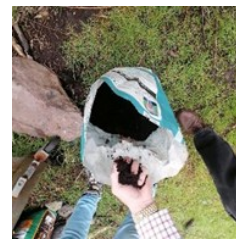
We have just added five new plot holders from this April with a little ground still to let so our waiting list is open for any budding gardeners. Just become a member by logging on to our page and once approved you can complete a plot note of interest form in the files section and send it to me at (martindear57@gmail.com).

Water is still an issue with no resolution to have the mains installed between the water board and Aberdeenshire council. There is an impasse between them, we believe.

To help a little, we installed another set of water troughs on the North side of the Polycrub to harvest the rainwater, along with two IBC tanks on the West side to pump the surplus into them from the troughs. We want rain at night and fine during the day!

We have a couple of events happening early May and in June from Pam Nwelih delivering workshops on propagation and seeds and later compost and soil to our members in the Polycrub. Thank you, Pam.

Two members attended the gardening/composting event organised by KDP at Johnshaven on 3rd of May, where they were shown how the local community pull together to make a large amount of green compost from the vegetation waste created around the village. They have a good surplus, into which we can tap.



Our local schools have been just wonderful in attending their plots and have planted loads so far, that were grown on site and transplanted out.

We have hillside nursery class each Monday morning and Friday afternoon are our most experience apprentices. Their teacher Mrs Snelling had propagated strawberries from her plot in Newtonhill and brought them up for the Nursery to plant in their tyre beds. Loads of enthusiasm from the pupils each visit.

Then we have Portlethen every Tuesday pm, with pupils completing their own plot work and having time to do community work on site as well.

Fishermoss has been active on their plot with a good variety of seeds and plants from their sowing in the tunnel now transplanted along with strawberry plants.

The participation keeps growing with a timetable now in place for every class (13 of them) at Hillside to have an allotment experience up until summer break.

We have a calendar of things they want to experience and grow including wheat, sweetcorn, and barley as it all links it to Where My Food Comes From. We at the allotment have a guide/plan to make sure we support the pupils and staff to meet the outcomes for the school and tick as many boxes as we can.

Finally, the Academy will have been back by the time this goes out and will have worked on their plot and put a variety of seeds in the ground for harvesting later this year.

All schools will have, over the weeks, completed varying tasks of community work on our allotment.

You can keep up to date with the schools' activities on our Facebook page <https://www.facebook.com/groups/PDCAA/> as I write a narrative after each visit, about the success, they all have.



We are still planning an asset transfer of the site to use as a community allotment going forward and are setting up a working group to pursue that aim.

If you want to come up and see what has been happening, just appear or let me know so I can give you a tour. If you want to help financially, or by gifting materials such as compost for the schools, please feel free to come along.

Our next fundraising plan is to purchase composting toilets so as we can expand the experiences to a wider group of people, including those with mobility issues or disabilities.

Martin Dear, on behalf of the committee.

**PORTLETHEN
& DISTRICT
MEN'S SHED**

News from the Shed

Portlethen & District Men's Shed (PDMS) is open to anyone who wishes to come along and see what we do. **Our opening hours are Monday, Wednesday and Friday from 10am to 1pm. Check out our Facebook page for more details.** We are located on Cookston Road AB12 4PT, next to the Porty Cabin. Whether you wish to be actively involved 2 or 3 times a week or occasionally you will be made welcome.

As mentioned in the last Clochandighter, our Men's Shed has been working with Aberdeenshire Council to buy the unused Portlethen Social Work Building to give Shed members more space to continue and eventually expand the services we provide for the community. We have used the Community Asset Transfer process that was laid down by the Scottish Government some time ago. This process allows groups like the Men's Shed to take on the ownership of unused buildings for the benefit of the local community rather than let them decay as happens to many unused buildings these days.

Portlethen & District Men's Shed finally received ownership of the building late on Friday, 17th April 2026, after what was an 18-month battle with Aberdeenshire Council officers. We do wish to thank all the Aberdeenshire Councillors who supported our efforts to take ownership of the Rowanbank building. The building has been gutted so we are starting the process of bringing the building back into a functioning space. We have already received donations from the community that will help in the rebirth of this building to be a useful, working space for the benefit of the community. We will be continuing to seek help and support from the Portlethen Community so if you are able to help in any way then that will be much appreciated by the Portlethen & District Men's Shed.

We do not expect to be able to move into the new building for some months to come so for the moment you can connect with us at the Cookston Road Shed.



Here is photo of what will shortly be the new home of the Portlethen & District Men's Shed



New Men's Shed



Main Workshop



Small Workshop

We have already started discussions with Portlethen Community Groups who may want to share parts of this building with the PDMS. So, if you want to use part of this building in the future then please get in contact.

Members continue to respond to requests from the local community to make or repair a whole range of items. So, if you want your garden furniture repaired, refurbished or just repainted in time for Spring then come by our Shed for a chat. We have started making planters for Spring planting so let us know what you need. Clothes Props have been popular in the last few weeks with 10 supplied for 3 local residents. If you wish the members to make you an item or if you have a project you would like us to assist with, please get in touch and we can discuss your requirements.

If you wish to make a donation to Portlethen & District Men's Shed of timber or tools, please get in touch. We can arrange collection of your donations. Our thanks to everyone who donated tools and wood over the past few months.

If you wish to join the Portlethen & District Men's Shed, please contact the email address below and ask for a Membership Form or come along for a blether and learn more about how to get involved.

Jim Duguid, Secretary

Email: secretary@portlethenmensshed.co.uk

C.M Portlethen Sheds

- Custom Sheds
- Made to customer sizes
- Erecting of pre bought sheds
- Re felting of shed roofs
- Painting and repairs



Craig Murdoch
Bramble Place
Portlethen
Aberdeenshire
AB12 4UG

Tel: (01224) 360005
Mobile: 07756 758921

HS IT and Networks

IT Specialist

Specialising in PC, Laptops, Servers, Cisco & HP Networking Gear.

- Computers & laptop rebuild including migration to Windows 11
- Windows 10 to Windows 11 migration with no data loss
- Linux, Windows 11, Virtualisation and Servers installation & troubleshooting
- Forensics grade software based Data Recovery
- Network and Cyber Security for home and offices
- Virus, ad-ware, spyware, hack ware, hijack ware, malware removal
- Wireless Surveys, and WiFi signal improvement
- Installation & upgrades of Routers, switches, Firewalls
- Remote/TeamViewer based support available
- Site call-outs, and out of hours service available *



For consultation please email **Himanshu Srivastava BSc (Hons)** at **admin@hsnetworks.co.uk** with cc to: **yeshu26@gmail.com** or phone **0784 7469133**

<https://www.facebook.com/HSITNETWORKS>

Linkedin profile: <https://www.linkedin.com/in/himanshusrivastavaengineer>



* As per availability



Apex Accountancy Solutions Ltd

Rosalind Brown
Portlethen | Aberdeenshire

Tel: 07976008798
Email: solutions@apexpayb.co.uk
Web: apexpayrollandbookkeeping.co.uk
FB: [ApexAccountancySolutionsLtd](https://www.facebook.com/ApexAccountancySolutionsLtd)



Bookkeeping / Tax Returns
Payroll
Onsite Support
Payroll Process Improvement

Love to travel?

Let me help you plan your next adventure 🌴



I'm a fully ABTA & ATOL protected, local Independent Travel Advisor — I can book everything from family holidays and cruises to romantic getaways and everything in between all with trusted travel partners.

- City Breaks
- Cruises
- Package Holidays
- Ski Trips
- Safaris
- Staycations
- Sports & Entertainment Packages

Plus, if you'd love to earn an income from travel, I can show you how to start your own travel business too!

📞 07834958322
✉ hillside-travel@outlook.com
📘 Hillside Travel
📷 [hillside.travel.lindakeir](https://www.instagram.com/hillside.travel.lindakeir)

House of Salvation Church, Portlethen. **Scottish Charity No: SC045795**

Celebrating Community, Sharing Hope

As the sunshine returns to Portlethen, we're grateful for the joy-filled moments we've shared with our neighbours this spring — moments that remind us why community matters and how small acts of kindness can brighten an entire town.

Spring Highlights

Fun Factory – Mother's Day Edition

The Jubilee Hall was buzzing with colour, creativity and laughter as children aged 5 – 11 enjoyed games, crafts, and a warm, friendly atmosphere. It was a beautiful reminder of how much joy can be found when families gather and children are given space to play, learn, and shine.



Portlethen Easter Egg Hunt at Nicol Park

What a day! Nicol Park was buzzing with excitement as families from across Portlethen turned out in great numbers for a fun-filled afternoon of games, prizes, chocolates and plenty of Easter excitement.

Easter Visit to Lethen Park Care Home

We were honoured to return to Lethen Park Care Home for a special Easter edition of music, encouragement, and companionship. Sharing songs and conversation with the residents continues to be one of the most meaningful parts of our ministry — a reminder that every season is an opportunity to bring comfort and joy.

Coming Up This Summer

- **Fun Factory – Summer Edition**
Saturday 13th June, 1–3pm at Nicol Park
A joyful afternoon of games, crafts, and friendship for children aged 5–11.
- **Summer Musical Event**
August at Portlethen Academy
An uplifting evening of music and community — more details coming soon.

You're Always Welcome

Join us every **Sunday at 11am** at **Portlethen Academy Theatre**. Whether you're new or local, there's a place for you in our church family

Contact - Joy on 07877 103721 / 01224 516003

Email – pastor@houseofsalvation.org.uk

Portlethen Market
By PDec

3RD SUNDAY OF THE MONTH 1100-1400
AT KEPAK MCINTOSH DONALD, PORTLETHEN
Email Portlethen.market@gmail.com to book
F: @PortlethenMarket

2026 Dates

- ~~15th Feb~~
- ~~15th Mar~~
- ~~19th Apr~~
- 17th May
- 21st Jun
- 19th Jul
- 16th Aug
- 20th Sep
- 18th Oct
- 15th Nov

MCINTOSH DONALD



**The Leathan
Award-winners
at
The 14th Annual
Scottish Entertainment
And Hospitality
Awards**

**Highly recommended
Best Pub in the East
AND
Best Dog Friendly Venue
of the Year**

b+m

balfour+manson

Legal excellence. Caring people.

Your local solicitors

Balfour+Manson provides a full range of services for all your legal requirements, including:

- Wills, Powers of Attorney, Trusts, Tax
- Residential property work and estate agency
- Family law
- Personal injury and medical negligence claims
- Employment law
- Resolving disputes



Amy McKay
Partner
01224 498076
amy.mckay@balfour-manson.co.uk

Accredited by The Society of Trust and Estate Practitioners (STEP)



Greg Lawson
Partner
01224 472999
greg.lawson@balfour-manson.co.uk

Accredited by The Society of Trust and Estate Practitioners (STEP)

11 The Green, Berrymuir Road
Portlethen AB12 4UN

Tel: 01224 784855
info@balfour-manson.co.uk

www.balfour-manson.co.uk



Living well in Kincardine and Mearns

A collaboration between
Inverbervie, Stonehaven, Laurencekirk
and Portlethen Medical Practices



**Thursday
June 11th**



Drop in from
1-7.30pm



**Stonehaven
Town Hall**

What to expect



Simple, practical help to make healthier choices



Support to build small habits that last



Friendly one-to-one support to help you cut down on unhealthy habits



A chance to find local groups and activities that can help your health



Short, relaxed talks and "have-a-go" sessions running through the day



If you require assistance with transport, please contact  Tel 01467 536111  Email travel@thinc-hub.org



Michael Morton Painting & Decorating Services

All aspects of internal and external decoration undertaken

Ames taping - Wallpapering

Local references available on request

30 years experience in the trade

Please call Mike for your friendly no obligation quote

Tel: 07809896151 or e-mail: mike.paintin68@gmail.com



eb-architect.com



THE ROYAL INCORPORATION OF ARCHITECTS IN SCOTLAND
CHARTERED PRACTICE

eb-architect ltd

Chartered Architect

Alterations | Extensions
Conversions | New Builds

Measured Surveys | Outline Proposals
Planning + Building Warrant Applications
Construction + Tender Packages
3-D Renders | Space planning
Contract Management

01224 969600

Office 10,
Badentoy Business Centre
Portlethen



Local Blind Company

All types of Blinds and Shutters supplied and fitted.

Free Estimates and fitting!

Call Richard on 07834611660

Customblindsaberdeen@gmail.com

Rotary

Portlethen and District



PSQ winning team

Primary Schools Quiz: The Primary Schools Quiz (PSQ) was held in March, with Newtonhill, Fishermoss, Portlethen and Hillside schools taking part. As part of the transition from P7 to S1, it was hosted by Portlethen Academy and the whole P7 class attended to support their two teams, A and B. Hillside B came out winners, with Hillside A close behind. The winning team goes forward to the Area Round, to be held in Curl Aberdeen on Saturday 16th May, we wish them well.

RYLA: We are looking forward to sending our selected candidate to the male camp at Abernethy this summer. We interviewed two great candidates again but as I write can only fund one. We have had a generous gift of four corporate box tickets for Andre Rieu at the P&J Arena and hope to raffle them at our District Assembly to boost our RYLA fund, in the hope of sending both boys. RYLA is the Rotary Youth Leadership Award, with the emphasis on leadership. The candidates take part in outdoor challenges, leading one themselves, and listen to inspirational speakers throughout the week, resulting in a certificate which they can add to their CV for university or future employers.



Kids Out: A Rotary day out for Special Needs children from across Aberdeenshire is always a great event. This year its being held at Bogenraith near Stonehaven. The children enjoy suitable activities geared to their needs, the highlight for many being the pony rides. We usually have someone there from Portlethen Rotary, but sadly due to lack of people available we are unable to help this year.

We continue to support other clubs with their events, all of us attended a celebration of St Nicholas Rotary club 50th year in the Beach Ballroom recently, which raised £1.500 for their charitable fund.

We have lost several members in the last year; some have passed away, some left for personal reasons, or moved elsewhere. You may not see us at the local fairs this year, but we hope to continue our work with local youth and around the community. Please have a look back though our Facebook page 'Portlethen and District Rotary' to see what we have been able to achieve in the past when we had more manpower available. Donations to the Larder and the Community Gardens, shoeboxes, crocus planting, duck races (we still have the ducks), hands-on Horse Races (we still have the horses), quiz nights, presence at the local fairs and of course the social side. We've been visiting other clubs, theatre, concerts, 10-pin bowling, etc. We meet twice a month for soup and a sandwich before our planning meeting, and on the 1st Saturday of the month in Sally's in Portlethen at 11am. We could contribute so much more with more bodies, so if you fancy making some new friends and making a difference, please message us via the Facebook page or drop an email to acm739@btinternet.com for more information.



Portlethen Bowling Club

info@portlethenbowlingclub.co.uk

The bowling season started on 11th April and was very well attended.

The first Jack was played by Margaret Sloan, wife of the President. This was followed by a Spider competition and a very successful Hat.

We are pleased to say that our overall numbers have increased. Sadly though, we have had to pull out of the Monday Seniors, as we have lost a few to illness and old age and are no longer able to play. The situation is improving however, since the addition of some younger members bodes well for the future.

We continue to host several social events each month. In April, for example, we had a full bus for the trip to Perth Races. Sadly, there were no big winners amongst us.

Our **Annual Summer Fayre** will be held on **Saturday 25th July**, between 12.00 and 4.00pm. Please contact the Club should you wish to hold a stall at this event.

We hope you all enjoy the summer and, if you are passing the Club and the gate is open, please pop in and say Hello.

Walter McMillan, Past President

John Duncan Joinery

UPVC WINDOWS & DOORS
GENERAL JOINERY

☎ 07843 095378

☎ 01224 784464



For all your Joinery Requirements

Email: johnduncanjoinery1964@gmail.com



Kincardine Coastal

Kincardine Coastal Church of Scotland



Portlethen



Newtonhill

Services

Kincardine Coastal Church looks forward to welcoming both old and new friends of all ages.

Sunday Morning Service in Newtonhill at 9:30 am with a later service in **Portlethen** beginning at 11:00 am.

If you need information on any event, please just speak to the Minister or any Elder.

Soupa Tuesday Lunches

These enjoyable events continue to be offered in Newtonhill Church on the first Tuesday of every month. Everyone is very welcome to join us in the church.

£6 for soup, sweet & coffee

Skateraw Fair

Saturday, 27th June. The theme this year is "Celebrating 50 Years" and the Church will again provide the teas, coffees and cakes upstairs in the hall.

Car Wash

This service is provided on the first Saturday of each month in the car park of Newtonhill Church car park between 10:00 am and Noon.

Bible Study

Every 2 weeks, on a Wednesday evening at 7:00 pm, our active Bible Study Group meets in The Manse at Portlethen. We also run a similar Wednesday morning group at 10:00 am in Newtonhill Church.

If you are interested in joining this group, please contact the Minister or any Elder.

The Girls Brigade

1st Newtonhill Girls' Brigade continues to meet every Monday evening in Newtonhill Church, beginning at 6.15 pm, with activities for girls from 5 years old and upwards.



They would be happy to welcome any girls from Portlethen too.

Support from the community is always welcome and, if you require further information or if you daughter is looking for something to do on a Monday evening, please contact girlsbrigade@newtonhillchurch.org.uk

The Guild



The Guild meets regularly in Newtonhill Church on a Wednesday afternoon..

New members are always welcome to join us to enjoy a very varied programme.

If you would like to get involved in any of the events or organisations listed above, please speak to anyone at the church or through our website:

www.kincardine-coastal-church.org.uk

Church Office, Portlethen, Tel: 01224 782883

Tue: 2.15pm- 4.45pm; Wed: 2.15pm-4.45pm; Fri: 9.00am-1.00pm

E: administrator@kincardine-coastal-church.org.uk



We Clean Ovens

...so you don't have to!

Call us today to have your cooking appliances sparkling, using our own eco friendly products.

Our oven cleaning experts will leave you free to enjoy your valuable leisure time.

- Range & Aga Specialists
- Ovens & Hobs
- Extractor Hoods
- Microwave Ovens
- Traditional Stoves



oven valeting service

Local | National | Affordable



For LOCAL Service call: **01569 552344** ovenustonehaven.co.uk



✦ Ready to Try Something New? ✦

What if your child could build confidence, make lifelong friendships and be part of something exciting, all while having fun every single week? At **LA Dance & Cheer**, that's exactly what being part of a competitive team is all about.

♥ Discover the Joy and Unravel the Misconceptions

There's often a misconception that "competitive" means overwhelming time and cost — **but** that's not the reality here. Teams train just once a week and athletes attend only 3 to 4 competitions between March and June, making it a manageable and rewarding commitment for busy families. Costs are also supported through optional fundraising opportunities throughout the season, helping to make competitive cheer and dance more accessible than many people expect.

★ More Than Just a Team

Being part of a competitive team offers so much more than performance. It's about:

- The moment they step onto the floor feeling proud
- The friendships that quickly feel like family
- Learning commitment, resilience and teamwork
- Growing in confidence week by week
- The excitement, memories and experiences they'll never forget

♥ Something for Everyone

With a wide range of teams across **Cheerleading, Tumbling, Pom Dance, Hip Hop, Jazz and Lyrical**, from ages 5yrs+ there truly is something for everyone, no matter their age or experience.

♥ The Perfect Age to Start

This season, there is a particular focus on welcoming brand-new athletes aged **5 to 6 years** into the youngest **Tiny Team**. This is the perfect age to begin, with a strong emphasis on fun, while building the foundations of technique, confidence and teamwork from the very beginning.

📅 Join Us in June

Evaluations will take place at the end of June, giving athletes & families the chance to meet the coaching team, explore the facilities at Studio 6 and find the team that's right for them. All that's asked is simple — a commitment to attend weekly training and give their best effort as part of the team.

👉 Not Quite Ready for Competitions? Start Here!

Alongside the competitive programme, enrolment for Allstar Cheer Dance & Gymnastics **recreational classes** will open in July for new members, with classes starting after the summer holidays. From Preschool Classes, as well as Primary and Secondary ages too, there is something for everyone without competitions.



☀️ Summertime Fun

For anyone keen to get started sooner or try something new before deciding to join **Summer Holiday Sessions** will run throughout the school break. These sessions are open to everyone, with no experience needed and can be booked online at <https://bookwhen.com/ladcacdg>

👉 A Place to Belong

Whether your child is ready to perform, compete or simply try something new, there's a place waiting for them. Sometimes all it takes is that first step onto the performance floor... and everything else follows ♥

Recreational enquiries: allstarcdg@outlook.com

Competitive enquiries: ladanceandcheer@outlook.com

Studio hire: studio6rental@outlook.com



REC & PRESCHOOL
 Ages 3yrs+
 Just for fun
 Boys & Girls
 No Experience Req

Cheer, Dance & Gymnastics

View our timetable, prices & book online:
www.allstarcdg3.wixsite.com/allstarcdg




COMPETITION TEAMS
CHEER, POM, HIP HOP, JAZZ, LYRICAL & TUMBLING

Please visit for more information
www.ladanceandcheer.wixsite.com/ladc




NEW OPEN PLAN FACILITY WITHIN PORTLETHEN
NOW AVAILABLE TO HIRE
 SPRUNG, MATTED FLOOR & MIRRORS
 IDEAL FOR DANCE / FITNESS CLASSES,
 PRESCHOOL & COMMUNITY GROUPS



STUDIO 6 PLEASE GET IN TOUCH FOR MORE INFO
STUDIO6RENTAL@OUTLOOK.COM



1st Portlethen Scout Group: Busy Weeks, Big Adventures, and a Call for Help

If it feels like you blink and suddenly Scouts have been camping, hiking, painting with light, and giving back to the community... that's because they have. It's been a busy few months for the 1st Portlethen Scout Group, with Beavers, Cubs and Scouts all squeezing a surprising amount of activity into what is, in reality, just an hour or two a week.

Getting Outdoors and Giving Back

Back in Spring, our Scouts headed off to Templars' Park Scout Campsite for a work weekend, joining Explorers, Network members and leaders in clearing fallen trees and branches across the site. It was a brilliant example of teamwork – and a chance to give something back to a place our troop uses regularly. The reward? A sunny finish to the day and a first look at the new campfire circle, which we're very much looking forward to using later this year.



Bourtree Cubs have also been making the most of the outdoors, including a creative light painting session at Tollohill Woods. Armed with torches, glow sticks and plenty of imagination, they produced some fantastic results – and had a great time doing it.

Camps, Hikes and Everyday Adventures

March saw multiple Scout camps/sleepovers take place (yes, really – even if some of us blinked and missed them!), along with a well-earned hike out to Duthie Park. These activities are what Scouting is all about: building confidence, learning new skills and spending time outdoors with friends.



Behind the scenes, leaders are already thinking ahead to future camps – from making sure waterproofs still fit and boots still fasten, to planning menus, packing lists and activities.

More Than Badges

Parents often ask what Scouts actually do at weekly meetings. The answer is: a bit of everything. From earning badges and working towards top awards, to learning practical skills, teamwork, and independence – plus plenty of fun (and the occasional muddy jumper).

Scouting also helps young people understand community responsibility. Recently, our Bourtree Beavers collected donations for The Larder, delivering them after their meeting, and using the opportunity to talk about healthy eating and helping others.



Want to Join Us... or Help Out?

Unsurprisingly, we do have a waiting list for young people keen to join – use the link on our Facebook page to join it. We do our best to accommodate as many children as possible. What really makes the difference, though, is volunteers.

Like many Scout groups, we're always on the lookout for extra adult help – particularly on Wednesdays. You don't need prior scouting experience; just a willingness to get involved and support the leaders who already give their time week in, week out.

Finally...

Writing an article sometimes feels harder than organising a camp – mostly because all of this activity happens in between work, school runs and everyday life. But we hope this gives a flavour of what the 1st Portlethen Scout Group has been up to recently... and why it's worth being part of.

If you'd like to know more about joining, volunteering or supporting the group, please get in touch or visit our Facebook page for the latest updates. It's easy to find: <https://www.facebook.com/1stportlethen/>

**This space could be
working for you!!**



Portlethen and District
Voluntary Community
Ambulance Association
Scottish Charity Number: SCO 31829

MEET THE TEAM ROY ASPDEN - DEPUTY MAINTENANCE COORDINATOR

I've been driving the Portlethen Community Ambulance for almost 2 years. We are a charity that operates a 14-seater minibus with wheelchair lift, providing patient transport to and from the Portlethen Medical and Dental centres as well as supporting a number of local social groups and outings.

What attracted you to volunteer?

I was keen to give something back to the community after retiring in 2023 from a career in oil and gas where I had the good fortune to work in many countries and latterly managed the decommissioning of large North Sea offshore platforms. It was working in Japan where I met my wife with whom we have three grown up daughters and two delightful grandchildren.

Some say it's all downhill after retirement. We recently had a ski holiday with all three generations, and I certainly enjoyed that downhill experience! In summary, I find driving the ambulance energising and purposeful. It's uplifting when we receive positive feedback from our appreciative passengers. I am also the deputy maintenance coordinator, helping to make sure the ambulance stays in tip-top condition.

Do you stay in Portlethen?

Actually, I live in Stonehaven but it's only a 10-minute drive up the coast road.

What do you enjoy most?

There are around 10 rota drivers, and we mainly do one half day per week, with some relief drivers giving us a break when needed. I enjoy the community of like-minded volunteers supporting each other, sharing knowledge and organising ourselves to provide relief cover for holidays etc. I also enjoy the chat with our passengers - some people don't get out much and they welcome a natter and gentle banter. Our charity won the Queen's Award for Charitable Services. This summer I'll be attending the Royal Garden Party in Holyrood as a guest representing the charity.

What is the biggest challenge?

Some of the rural addresses can be difficult to find. We might get an address like Mrs Bear, Goldilocks Cottage, Banchory Devenick within a large postcode area! Google Maps can be helpful but actually it's no match for our WhatsApp drivers' group when it comes to accumulated local knowledge. I also enjoy the challenge of managing the timings on my shift. We receive an

appointments timetable from the Medical Centre, but even so sometimes things don't always go exactly to plan. So, during the course of a half-day shift, the timings can become quite dynamic to try to pick up and drop off everybody on time.

Is any special training required?

All drivers need a D1 rated driver's licence for the size of our minibus. We also undergo MiDAS training - MiDAS is the Minibus Driver Awareness Scheme, organised by the Community Transport Association U.K. (CTA) which promotes a nationally recognised standard for the assessment and training of minibus drivers. It's so that we can provide a safe and comfortable journey for our passengers.

How are we funded?

We rely on donations from kind benefactors and users of the service as well as a Scottish government fuel subsidy. All our drivers and support staff work on a purely voluntary basis.

How can you get involved?

We're always looking for volunteers to strengthen our pool of drivers. If you would like to find out more, our website is:

<https://portlethen-ambulance.co.uk/> or contact:

**Lee Drain (Rota Coordinator) on 07876 301062 (ldrain@aol.com) or
Bill Fraser (Chairperson) on 07974 971055 (billfraseramb@yahoo.com)**

Need to speak to your local MP/MSP?

Andrew Bowie MP

House of Commons
London, SW1A 0AA
Tel. 01224 766959
or e-mail andrew.bowie.mp@parliament.uk

Stephen Flynn MSP

Suite L1
Woodburn House
4/5 Golden Square
Aberdeen, AB10 1RD
Tel 01224 213114
Email Stephen.flynn.msp@parliament.scot
X (Twitter) @StephenFlynnSNP

865 (Portlethen) Squadron:



The start of 2026 has been incredibly busy for 865 (Portlethen) Squadron, and we've hit the ground running.

At the beginning of the year, three members of our staff team attended a week-long Combined Initial Course at RAF Cranwell. This course serves as an induction for newly uniformed staff and provided a strong foundation for their roles within the Squadron.



In February, we marked an important change in leadership. Ftl Lt Sarah McLennan stepped down as Officer Commanding after an outstanding 13 years in the role. She has now taken up the position of Sector Commander and will continue to support the

Squadron in this new capacity. We thank her for her years of dedication and wish her every success moving forward. Command has now been handed over to Fg Off Callum Davie.

Training has been a major focus so far this year. Our cadets have taken part in Bronze Wings courses and a road marching weekend, building both skills and resilience. We also hosted a Sector Training Weekend, giving cadets the opportunity to work alongside others from across the area on courses including Method of Instruction, Leadership, and First Aid.



In addition, one of our cadets attended a Regional Activity Camp at Garelochhead Training Camp on the west coast of Scotland. This included a wide range of activities such as L98A2 live firing, first-aid training, leadership exercises, cyber training, and arms drill.

Last month, we held our annual Presentation and Awards Evening to celebrate the achievements of our cadets over the past year. Cadets delivered presentations to their parents, showcasing the activities they had taken part in throughout 2025. Following this, awards, badges, and promotions were presented in recognition of their hard work and commitment. The evening concluded with refreshments and, of course, plenty of tea, coffee, and cake.



As we continue through 2026, the Squadron remains focused on delivering high-quality training in line with our syllabus, while also seeking out new and varied opportunities to further develop our cadets' skills, confidence, and experience.





YOU ARE WELCOME!

We are a church in the heart of
Portlethen.

We meet every Sunday at the Jubilee
Hall, at 10:30am, with folks of all ages
and stages in our church family.

Whether you are a Christian and live
locally or want a welcoming space to
explore faith, we'd love to have you!



Tuesdays at 10am
Jubilee Hall, Portlethen

A group for parents, carers and toddlers to come and sing, play and snack together.

Please get in touch with Jennie (07725989147) to find out more

Craft Group

Thursdays at 7pm
Porty Cabin, Portlethen

Come to a relaxed evening. We make crafts, learn new skills, have a blether and connect with others each week.

First Sunday Each Month
10:30am at Jubilee Hall
We eat brunch together and explore the stories fo Jesus



If you want to find out any more
email zak@portlethencf.com or
check out our website

portlethencf.com



News from Cllr Mel Sullivan

This is usually a hopeful time of year for me. The council's new financial year began in April, and the dream that the budget would stretch to do all the potholes and repair work was alive for at least three weeks. I'm currently attempting to get the Berrymuir Road potholes seen to before the estimated repair date of April 2027.

The chart shows how the £859 million revenue budget is planned to be spent this year. Education is the biggest sector, costing around £407 million, with adult social care second at a spend of around £179 million.

There is a new website that has been developed to help people understand child protection, find guidance, and take action if they are concerned about a child's wellbeing. <https://aberdeenshirechildprotection.org/>

The reuse containers at Portlethen and Stonehaven household recycling centres now only accept donations of **electricals, furniture, and bikes**.

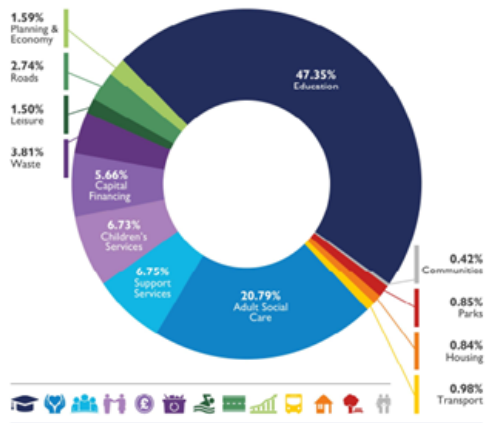
The reuse containers no longer accept sports equipment, bric-a-brac and general household items, footwear, and toys, as the onward market for these items do not meet the costs for the charities involved. Please note: all electrical items must have a CE or UK safety label or stamp and be in good working condition; all upholstered items must be in good condition and have a fire safety label attached.

As always, you can find me on Facebook as 'Councillor Mel Sullivan, North Kincardine'. My webpage is <https://melsullivan.mycouncillor.org.uk>. You can sign up to receive my non-political news emails. These include the latest planning applications and other local items of interest.

My email address is cllr.m.sullivan@aberdeenshire.gov.uk.

If you'd like to find out more about the Scottish Liberal Democrats, my email is mel.sullivanNK@gmail.com

How our revenue budget will be allocated for 2026/2027



Contact your Local Councillor

David Aitchison - cllr.d.aitchison@aberdeenshire.gov.uk

Shirley Burnett - cllr.s.burnett@aberdeenshire.gov.uk

Mel Sullivan - cllr.m.sullivan@aberdeenshire.gov.uk

Catherine Victor - cllr.c.victor@aberdeenshire.gov.uk

SCO-DEC

PROFESSIONAL PAINTING DECORATING AND
PROPERTY CARE SERVICES

DAVID SCORGIE

TEL. 07710796514 Email: scodec51@gmail.com

SMART BLINDS

Aberdeen & Aberdeenshire's
Number 1 Family Blind Company

We are a local family business based in
Cove with 18 years
experience, measuring,
manufacturing and fitting high
quality blinds at competitive prices.
We promise to beat any like for like
quote.

Call **01224 891177**

smartblindsabdn@gmail.com

www.aberdeensmartblinds.co.uk

ELECTRO-TEK

ELECTRICAL CONTRACTOR

Domestic,
Commercial
& Industrial
Electricians



We offer first class electrical services across the North
East. Our fully qualified, professional electricians are
on hand to support you and are committed to providing
an outstanding customer service every time.

- All Aspects of Electrical Maintenance & Repairs
- Lighting Design & Installation
- Additional Sockets, TV & Phone Points
- EV Car Charging
- Installation of Smoke Detectors
- Inspection, Testing & Certification
- Landlord Services (EICRs, PAT Testing etc)
- Commercial Maintenance (Guaranteed Fast Response)

10%
LABOUR DISCOUNT
FOR NEW
CUSTOMERS

GET IN TOUCH FOR A FREE NO OBLIGATION QUOTE TODAY

www.electro-tek.co.uk
01224 791914 / info@electro-tek.co.uk





Abersheen Valeting
Mobile Valeting and Detailing



- Full Valets
- Interior Valets
- Exterior Valets
- Monthly Maintenance Cleans
- Machine Polishing
- Winter Protection
- Paint Enhancement
- Stain Removal
- Free Quotes

We treat your car as if it was our own and can take care of it from the comfort of your own home. Over 5 years experience and fully trained.



Contact: Craig Fyfe
 Phone: 07783191797
 Email: info@abersheenvaleting.co.uk

Portlethen based but cover Aberdeen and Shire

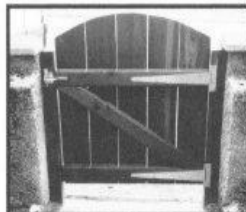
JM MAINTENANCE SERVICES

Call Jim Michie on 07766 946852

PRIVATE & COMMERCIAL
 Free Estimates
 SEPA Registered



- | | |
|--|--|
| <ul style="list-style-type: none"> ✓ Paving & Lock Block ✓ Decking ✓ Fencing inc Ranch and Upright ✓ Driveway Cleaning & Power Washing ✓ Shed & Greenhouse Erection | <ul style="list-style-type: none"> ✓ Grass Cutting ✓ Gardening & Landscaping ✓ Garden Tidy Up & Weeding ✓ Hedge Trimming ✓ General Home DIY & Maintenance |
|--|--|



Newtonhill & Portlethen 50+ Walking Group

The Newtonhill & Portlethen 50+ walking group was formed some 30 years ago and is part of the larger Grampian 50+ Walking Network. The Network held its annual Spring Fling in Portlethen this year, attracting over 200 people from groups throughout the region to participate in a variety of local walks and other activities with help from our and other nearby groups. It was much enjoyed by all

The group meets each Monday at 09:30, alternating between Portlethen and Newtonhill and we car share from there to our chosen destination. Our walks vary from around 6 to 8 miles and are generally on well defined tracks, though these can occasionally be muddy! Our destinations are quite varied and though we've definitely got our favourites that we do regularly, we're

always trying to slot somewhere new into our programme. The accompanying photos are from Lumphanan, Kinnaber and Tarland. It's always sunny on our walks!



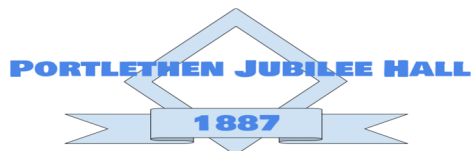
The group is very friendly and sociable, there's a steady stream of conversations on wide ranging topics going on as we walk and you find yourself chatting with different group members throughout the day. Generally there'll be around 10 -12 on a walk and it's quite a relaxed pace, we'll stop if there's something interesting to look at or a fine view to take in. There's always a stop for lunch around the half way point of our walks, with tea breaks as required and if we do happen to end up

close to a coffee shop at walks end we may stop there too.

We're always keen to see new faces so if you're interested in a bit of exercise, seeing some lovely parts of the surrounding countryside and making some new friends why not come along and give us a try?

You can find out where we're walking and any other information by contacting our membership secretary Christine Moig on 07762 746710





Email - Jubileehallportlethen@gmail.com
Facebook - Jubilee Hall Portlethen



News from your community hall.

Summer Update!

With the weather turning warmer and the longer nights, our thoughts turn to summer and the exciting times ahead, especially if you are a football fan!

The World Cup promises some late nights and chewed fingernails. The local Council have offered extended licenses for public halls should the local community want to gather to watch the Scotland matches. Should this appeal to you or your organisation, get in touch and we can arrange to host your event. Our website (jubileehallportlethen.com) will show how to make a booking.

Before that though, on 7th May, the hall will turn into a Polling Station for the day. This is an opportunity to exercise your democratic rights, but also to check out the hall if you have not visited before - we are sure you'll be impressed.

Our journey on the transition to an Integrated Organisation continues and we are working on a reorganisation which will allow ownership of the hall to go to the new group of Trustees. When complete we will be able to apply for the significant amount of funding we require to meet the goal of Net Zero by installing solar panels and battery storage, as well as build the extension we need to expand the space we can offer to community groups and individuals. The architect's drawings can be viewed in the hall. We are currently recruiting for an Invoice Clerk and Committee Secretary. If either of these appeal to you, then please get in touch.

Let me also share some other news. Over the last couple of months, we have updated our website, jubileehallportlethen.com, and the site now has information on the hall itself, how to book the space and general information on all of the events taking place week by week. This can be useful if you are looking to join any of the many activities taking place. Contact information for each of our regular events is there to allow you to get more information should you wish to join in.

Booking the hall* is now a simple process - check the hall diary and if the time you want is free, simply reserve the time you want, and our Booking Clerk will be in touch to confirm the booking. Invoicing has also been simplified with invoices issued at the end of the month to those individuals and organisations who had bookings during that calendar month. Check it out!

We look forward to seeing you soon!

Dave Johnstone, Chair

Jubileehallportlethen@gmail.com

BOOK THE HALL

*NEW SYSTEM: Booking the hall is easy. Go to our updated website

www.jubileehallportlethen.com

where you will find our diary and times available.

Reserve your space and our Booking Clerk
will be in touch to confirm the booking

The booking rates are as follows:

- Rental of hall: £20 per hour
- A projector, screen and high quality sound system are available for an extra £20 per booking.

A2D Garden Services

Professional, reliable and friendly service.

Grass cutting, hedge trimming, planting
and general garden maintenance.



Andrew Duncan, HND Horticulture
Based in Findon S.E.P.A. Registered

Contact for a free quote

Tel 07500 558158

E.mail a2dgardens@aiduncan.plus.com





The Lodge of Portlethen No. 1805

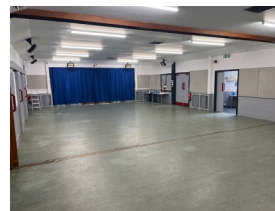
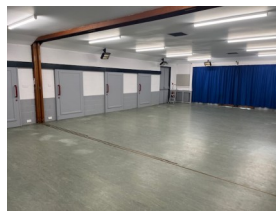
*On the roll of
The Grand Lodge of
Ancient Free and Accepted Masons of Scotland*

Allan Malcolm. Secretary

E.Mail:- 1805lop@gmail.com

Hi, to everyone, Well I would think the biggest majority of us will have recovered from Christmas and New Year, now most will be looking forward to a holiday later in the year. Unfortunately with the state of the world right now, we must plan them carefully.

The Lodge, apart from doing a few visitations, has not been up to much since the last edition, although we have had our Annual General Meeting and also the Installation of the Right Worshipful Master. The project to update the Bourtree Community Hall is finished, with just ongoing running repairs, They are getting quite a few enquires to hire the hall which is good to see.



Just a wee reminder:-

There is a DE-FIB outside the Bourtree Community Hall door, should you be required to use it. You need to call the emergency services, ask for the Ambulance Service, and give them the location and you will receive the code to open the box.

The Province of Kincardineshire has two well versed gentlemen, total volunteers, who are quite willing to spread information to any group at an agreed time about Prostrate Cancer, this also includes women's groups, as typical men seem to leave the symptoms for another day when the Lady of the house might be able to spot changes and get him to the Doctor for the test.

The Provincial Charity Ball will take place on the Friday 13th of November 2026 and has already been sold out with a reserve list started. It is normally a good night with quite a lot of money being raised for two local charities being presented with cheques by the new Right Worshipful Provincial Grand Master of Kincardineshire, who will be Installed in June 2026.

Freemasons are often asked :- What do you do? What is it all about? Where do you meet? There is an official explanation which is...

What is Freemasonry?

What are the Three Great Principals?

Brotherly Love – Every true Freemason will show tolerance and respect for the opinions of others and behave with kindness and understanding to his fellow creatures.

Relief – Freemasons are taught to practice charity and to care, not only for their own, but also for the community as a whole, both by charitable giving and by giving voluntary efforts and works as individuals.

Truth – Freemasons strive for truth, requiring high moral standards and aiming to achieve them in their own lives.

Freemasons believe that these principles represent a way of achieving higher standards in all walks of life.

That is a brief description of our aims. We promote friendship and hopefully help with projects in our local and national areas. We do not advertise our efforts or our contribution through advertisements although this may change in the future. The Grand Lodge of Scotland chooses a charitable organisation, the Grand Master choosing who to collect for: all the Lodges in Scotland will then do their best with sponsored walks, nights out and many other events, fund-raising for the chosen charity.

Now, just a little reminder, as there are many Freemasons within the Portlethen community, we would like to just stir up a little memory in the minds of those Masons who have fallen away from their Mother Lodge for whatever reason. Rather than just sitting twirling your thumbs or even just doing some gardening to pass the time, we would like to cordially invite you to visit our Lodge. We meet on the first Friday of each month. So if you are at a loose end, do come along. We would be happy to see you. It would get you out the house for a while and hopefully make new friends, enjoy a cup of tea /coffee and a sandwich/sausage roll, and a good blether with like-minded Brothers who you may already know. Don't be bashful, drop me a line and you will be met and introduced to all and hopefully enjoy a good evening with us.

YOU WILL BE MADE VERY WELCOME

As always, our invitation goes out to all Honourable men of like-minded thoughts to come and join us, just send me an email and I will arrange for you to meet some brothers who will answer as many of your questions as possible.

Until the next addition, we hope you all
Stay Safe and we wish you all good health and happiness for you and your families.

PRESENTING
PORTLETHEN
GALA 2026

SATURDAY
8TH AUGUST

BOURTREE PARK
& ACADEMY

12pm-5pm

STALL HOLDERS
WANTED!

STALL HOLDER
SPACES FROM £30



GALA
SPONSORS
NEEDED!

WE ARE LOOKING
FOR LOCAL
BUSINESSES TO
SPONSOR THIS
YEARS GALA FROM
£75



Email for more info
gala.portlethen@gmail.com



Welcome to the Bettridge Centre, your friendly local leisure centre in Newtonhill, here for you and all your family.

With regular pre-school, after school, sports and keep fit classes; dance, yoga and martial arts; singing and craft groups, lunch club and social occasions – we welcome everyone of all ages and all abilities.

And when you want to celebrate a special event, we can offer you the venue you need at a price you can afford. Our friendly, professional staff are here to help you make it a day to be remembered.

New Party Packages!

Our popular Saturday Coastal Play Parties have been relaunched and they're booking up fast – check out our website's Parties page to find out more. DIY parties are also available with a wide range of equipment to hire.



The centre is fully accessible and has disabled toilet and shower facilities. With easy transport links via the A92 and the bypass, plus free car parking - make life simple for your guests by holding your event here.

To find out more about us and what we have to offer, visit www.bettridgecentre.org.uk, follow our Facebook page or call **01569 731320** during office hours, we'd be delighted to hear from you!

THE LARDER (PORTLETHEN AND SURROUNDING AREAS)

#THELARDER #FORTHECOMMUNITYBYTHECOMMUNITY



The Larder at the Porty Cabin on Cookston Road (opposite Portlethen Primary School) is getting prepared for another busy period. Autumn and Winter 2026 are likely to be a struggle for many individuals, pensioners and families as the cost of living and energy prices increases yet again.

Date for your Diary – SCARF will visit the Porty Cabin on **3 July between 2.30pm-4.30pm**. Please come along for advice on energy savings and efficiency.

The Larder is also here to ease some of these financial difficulties as no one should have to choose between “Heat or Eat”. We offer fresh milk, bread, eggs, fruit and vegetables, freezer, fridge and cupboard items, toiletries, cleaning and baby items and pet food, all for a small donation, pay what you can. We are open **Monday 6pm-8pm, Friday 2.30pm-4.30pm and Saturday 10am-12pm**. Our volunteers are there to help anyone needing some extra support and you do not require a referral from another organisation.

If you do find yourself struggling with increased food and utility costs and could benefit from extra help, please scan the QR Code in our attached poster to place an order. You can also click the link on our Facebook page to prebook and choose the items you are short of via the Google form. Alternatively, pop in or contact us on c19portlethenhelp@gmail.com or 07376 133870.

There are still many people in our local community that do not realise that The Larder is available to **EVERYONE**, not only families that are struggling financially. Please come in and visit The Larder to see the organic vegetables donated from the farm at Bridge of Muchalls through the Oneseedforward organisation and the fruit and vegetables received weekly from FareShare via CFine. These items are for **EVERYONE** to benefit from, for a small donation, pay what you can. We also sell fresh farm eggs, soup packs and fruit packs at a fair price. The Fareshare items are excess stock items and are distributed to us to stop them from being sent to landfill and prevent food waste. Please see our weekly Facebook updates on the food items donated or pop in to see for yourself.

All monetary donations are then used to purchase fresh items weekly. This QR Code can be scanned if you would like to donate to The Larder Funds. The Larder also accepts donations of non-perishable food items, toiletries, cleaning and baby items and any type of pet food.



The Larder Team



FRESH FRUIT AND VEG

FREE SANITARY PRODUCTS

MEALS

Portlethen Larder

CUPBOARD ESSENTIALS

FRIDGE ITEMS

Donations always appreciated

Supporting the community who may be facing hardship in a dignified way.

MILK & BREAD

Stopping food waste in our community by offering surplus food.

FRESH FARM EGGS

No referral needed.

Open to all.



Scan the QR code or use the contact details to request a order.

Porty Cabin
Cookston Rd
07376133870
c19portlethenhelp@gmail.com

MON 6-8, FRI 2.30-4.30 AND SAT 10-12

@thelarderportlethen




ST TERNAN'S SCOTTISH EPISCOPAL CHURCH, MUCHALLS



Bishop of Brechin: The Right Revd Andrew Swift 01382 459569

www.stternans.co.uk

[Facebook "St Ternan's Episcopal Church"](#)

St Ternan's hopes that you all had a lovely time over the Easter period.

As a church community, we have a Eucharist Service on Sunday at 10.30am.

St Ternan's Church is a unique and very special place.

Our Community Room...



... is available for hire and this can be booked by just telephoning Sheila (01569 731608). Facilities are first rate, offering a well-equipped kitchen, and toilets (including disabled and baby-changing provision). Car parking is available, and there's provision for disabled drivers by way of a car park closer to the church.

Apart from the Community Room we also have space at the rear of the church (7 x 7.5 metres), which could be used for fitness classes such as yoga, children's nursery, public meetings, first aid groups, concerts, etc. There is also open space at the front of the church for musicians/choirs. There is a PA system where you can play your own music and an Epson projector and screen.

After a long winter, summer is approaching and no doubt many of you will be looking forward to a fun-filled holiday either abroad or locally. Whichever way you will be travelling to your holiday destination, please take care.



St Ternan's is open daily during daylight hours for those who prefer to spend some quiet time either in prayer or reflection. It is also a very good place to simply go and sit if you are in need of a bit of peace. All are welcome to do just that.





LOOKING FOR AN HONEST & RELIABLE LOCAL GARAGE?

We keep you safely on the road with expert servicing, repairs, and diagnostics you can trust.

Whether it's a quick fix or a full service, our friendly and experienced team delivers quality workmanship at fair prices.

Get in touch

01224 781158

service@lethenmotors.co.uk

- ✓ Servicing & MOT
(Class IV Vehicle up to 3000kg)
- ✓ Brakes
- ✓ Tyre Fitting & Balancing
- ✓ Diagnostics
- ✓ Exhausts
- ✓ Air Conditioning
- ✓ Clutches
- ✓ Batteries



Bridge End, Downies Road,
Portlethen, AB12 4QN

Portlethen A2B dial-a-bus

The service operates weekly with an Aberdeenshire Council wheelchair-accessible minibus



Wednesdays: 9.45 – 14.30 hrs

The A2B service is open to:-

- People who have difficulty walking
- People with other disabilities
- Residents who don't live near a bus stop or bus route.

If you think you need door-to-door transport you may qualify. We can take you anywhere within Portlethen e.g. shopping, medical centre, the library or to connect onto another bus service. You can ask for a trip at any time between 9.45 and 14.30 hrs, but you will need to fit in with other passengers. Phone us to find out more about the service.

All passengers have to be registered as an A2B member.

All trips must be pre-booked. Bookings can be made up to 7 days in advance, or up to 14 days for a medical appointment.

Call us on the A2B hotline number **01467 535 333**. Choose **option 1** for bookings, **option 2** for cancellations, **option 3** for general enquiries.



PORTLETHEN AND DISTRICT COMMUNITY COUNCIL (PDCC)

The Community Council is constituted to try to represent Portlethen and District community interests and to try to improve the area. Working with, and representing the views of this community to our local Aberdeenshire councilors .

The Community Council is contacted regarding the efforts of other Community Councils, and regularly made aware of planning and community engagement efforts. Your Community Councillors:

- Are unpaid volunteers trying to improve Portlethen and district.;
- Meet on the 4th Thursday every month, other than December, in the Larch room at Portlethen Academy;
- Are notified of all planning applications and are statutory Portlethen residents' representatives, working with Aberdeenshire Council and others;
- Can influence positively the direction of planned improvements to the area;
- Made representation to get some street lighting repaired – Bourtree.
- Helped the Men's Shed achieve Asset Transfer of out of use Aberdeenshire social work building;
- Have made clear concerns regarding health service provision, and difficulties with seeing health professionals;
- Have made clear Portlethen and district primary and secondary facilities are either full, or about to be.

We do not have enough people to help cover all of the opportunities open to our area. The Community Council, as with many voluntary organisations, **needs your help**. Come to meetings and put your concerns and your ideas for improving the community, to the Community Council. We are here to represent you.

**Meetings are held on the 4th Thursday of every month
(other than December), Larch room, Portlethen Academy, 7 pm.**

**PUBLIC HIRE TAXI SERVICE
based in Muchalls,
Aberdeenshire**



ARDEN CABS

LONG or SHORT DISTANCE including ALL SCOTTISH
AIRPORT TRANSFERS

- Estate Car with Large Boot
- Meter or Fixed prices
- Card or Cash Payment
- PVG Scheme Member
- Licensed in Aberdeenshire

**Arden Cabs picks up from all areas of South
Aberdeenshire**

Call, Text, WhatsApp or Email with pickup time and destination
details and we will respond to all requests

Telephone: Arnie Reid 07764 420839
Email: arden-cabs@yahoo.com

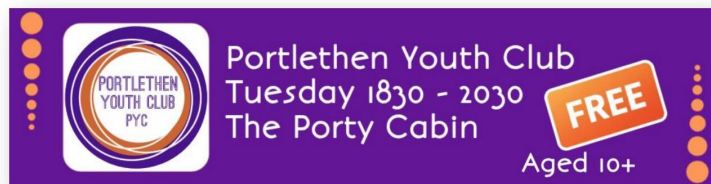
C.M Portlethen Handyman

- Grass Cutting
- Gardening & Landscaping
- Decking
- Fencing
- Sheds
- Fence, shed, decking, soffit
Painting
- Driveway Cleaning
- Plus much more
- **Free Estimates**



Craig Murdoch
Bramble Place
Portlethen
Aberdeenshire
AB12 4UG

Tel: (01224) 360005
Mobile: 07756 758921



Portlethen Youth club is proving to be a valuable space for young people in the community, offering a safe, welcoming environment where they can relax, socialise, and have fun.

Open to all and free of charge, the club provides a place for young people to spend time with friends, meet new people, and take a break from the pressures of everyday life. With a wide range of games and activities available, there is something for everyone to enjoy.

“Young people say it’s a fun place to be and you can make friends”

More than just a place to pass the time, the youth club plays an important role in supporting wellbeing. It creates a non-judgemental space where young people feel comfortable sharing their thoughts and being themselves.

For many who attend, the club it is a chance to switch off, feel included, and build friendships in a safe and supportive setting. As it continues to grow in popularity, it remains an important part of the community, helping young people feel connected and valued.



Find us @ The Party Cabin

SCAN HERE TO JOIN



Find us on FACEBOOK and request to join.
 Email us @
 Portlethenyouthclub@gmail.com

EIS WASTE SERVICES

Total Waste Management & Recycling



Recycling For Zero Waste

01224 784100

www.eiswaste.com

- **Competitive Skip Hire**
- **Skips & Containers from 4yd Mini Skips to 40cu.yd Ro/Ro**
- **Drop Door Skips for Wheelbarrow Loading**
- **Confidential Document Destruction**
- **Office Waste Recycling**
- **Same Day Delivery, Fast Friendly Service**

As a keen supporter of the local community we would like to offer you *10% discount on all Skip Hire and Confidential Waste Destruction as a reader of the

CLOCHANDIGHTER

To claim this exclusive offer for residents all you need to do is contact us for a quotation and quote **COVE10** to a member of our team and your discount will be applied

*this offer is available to customers with a home address in Porttletchen where the skip must be placed

EIS Waste Services Ltd, a Family owned Local company for the Local Community



EIS Waste Services is a trading name of EIS Waste Ltd Registered in Scotland SC254990.
Registered Office Gallowhill Recycling Centre, Checkbar Nigg, Aberdeen AB12 4LP



It is hard to believe we are already in Term 4 for this session. This year has certainly gone by in an absolute flash! As ever, we are so pleased to share with you some individual and group successes from our fantastic pupils and staff across Portlethen Academy. We hope you enjoy reading our updates. Thanks for your continued support.

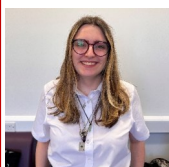
Mr Drennan, Head Teacher



Science Faculty – S1 STEM Club Success

After reaching the final in the Streets Ahead competition run by V&A Dundee the STEM team got to experience making a news report at the Sky Studios. They became news reporters, cameramen and editors! A fantastic experience and well done to everyone involved. Thanks to Miss Newman for supporting.

The group also undertook a competition recently with lots of action research and modelling to build a school that was sustainable and fit for the future. They did so well, received some outstanding feedback along with their very detailed report and presentation. True partnership working and pioneers of the future – well done to Juliette, Robyn, Chloe, Maia, Siana and Logan! Their hard work has earned them a Bronze Level Industrial Cadets award!



Foundation Apprenticeship

Beth Robertson S5 was nominated for the Aberdeenshire Foundation Apprentice of the Year Level 4/5 at the Aberdeenshire Council's Apprentice of the Year Awards Ceremony 2026. Unfortunately, Beth did not win her category but that does not take away from the fantastic achievement of being nominated – we are very proud! #ProudOfPorty

English Faculty - Reading Schools Update

The Reading Schools Team have been busy promoting reading across the school this term both to staff and our young people. Our junior classes visit the library once a week where we spend a portion of time enjoying reading our book before engaging with a range of library related activities arranged by our fantastic School Librarian - Mrs Mackintosh. Library Jenga remains a firm favourite. We have also started promoting new reads through the daily bulletin where new stock can be seen by scanning a QR code. In the library the pupil leaders are popping hand decorated bookmarks into Young Adult Fiction books to encourage our young people to choose something they may not usually read.



A particular highlight this term was World Book Day. Many staff posted pictures of themselves reading, which were displayed on the big screen in the social area all day. And in the afternoon, pupils were very surprised to see several staff transformed into book characters. Mischief Managed!

The next few weeks will be very busy for Reading Schools too as we are trying to gather our evidence for our Core Accreditation. We will send a Reading Attitudes Survey out to all young people and parents and carers in the next weeks, to gain a better understanding of our school community's reading preferences. A huge well done to everyone involved, and to Dr Millar-Weyland and Mrs Mackintosh for their power of work!

Extra-curricular

S2 Football - Scottish Shield Trip to Glasgow 🏴󠁧󠁢󠁥󠁮󠁧󠁿



On Friday 6th March, our S2 football team travelled to Glasgow for a Scottish Cup away fixture. The boys showed incredible determination and team spirit, battling hard throughout the match. Despite a brilliant effort, they were narrowly beaten 4-3 with a late goal deciding the game.

While the result didn't quite go our way, the experience of competing in a Scottish Cup match away from home is one the team will remember for a long time. The players represented the school fantastically and should be very proud of their performance.

A huge thank you must go to **Control Valve Solutions**, who kindly sponsored and paid for the team bus. Their support made this trip possible and helped our boys create special memories together.

Well done to everyone involved, and thanks to Mr McAdam and Mr Montgomery for their continued support! 🙌🏴󠁧󠁢󠁥󠁮󠁧󠁿

Girls' Netball Team Success

Our Girls' S4 Netball Team have just played their final match of the year (winning 12-11 against St Margarets) and having won 7/8 of their matches, have won the league!!!



Well done to everyone involved and a huge thanks to Rebecca Ripley, Active Schools Coordinator, for her support throughout the session.

Farewell to the Class of 2026!

As Study Leave has now begun, we wish a fond farewell to our S4/5 Leavers' and our S6 cohort. We had our usual celebrations to wish them well which included an S4/5 Leavers' event with their parents/carers and then our annual S6/Staff BBQ and S6 Celebration Day.



We will miss them greatly and wish everyone all the best for the future. #ProudOfParty!

Dear Clochandighter Readers,

Please enjoy reading some highlights from Hillside School.



Hillside Allotment

This term, Hillside School is delighted to launch our new allotment timetable, giving every class a dedicated slot to learn, explore and grow outdoors. Each year group is taking responsibility for a mini-project linked to planting, weeding and preparing the allotment, helping pupils understand sustainability in a hands-on, meaningful way.

We're incredibly grateful to Martin Dear for his guidance and support as we shape our plans. Our work at the allotment is closely linked to Curriculum for Excellence experiences and outcomes, and pupils are already sharing brilliant ideas about what they'd like to grow and how they want the space to develop. Our ambition is to create a thriving, inclusive outdoor learning environment where pupils can nurture plants, build confidence and take pride in contributing to something that grows across the whole school community.

We have an enthusiastic Eco Group who have been excellent site managers and are taking photographs of our progress to document our journey working towards achieving our next Eco Flag. Our allotment project plays a key role in this, giving pupils real opportunities to care for their environment, learn about biodiversity and take positive action. From planting and composting to creating habitats and reducing waste, our pupils are developing the knowledge and responsibility needed to help our school become even greener.

NHS Visitors

One of the actions from our school improvement plan this year has been to establish further links with businesses and the wider Community to support our pupils' learning and the development of Metaskills.

Last term, we were delighted to welcome NHS colleagues who delivered engaging, hands-on workshops for learners from Nursery to Primary 3, giving children a real-life insight into how meta-skills are used in healthcare roles. Through interactive activities, pupils explored teamwork, communication, problem-solving and caring for others, while learning how these skills are important in school and in supporting their communities.

Highlights included trying on NHS uniforms and exploring healthcare equipment, which sparked curiosity and thoughtful questions. These experiences helped children make meaningful links between classroom learning and the wider world, reinforcing how the skills they develop now will support their future learning, life and work. A big thank you to our NHS partners for providing such a valuable and memorable experience for our pupils!

If there are any local businesses or organisations out there who would like to work with us at Hillside School, then please reach out. We are really keen to make learning as relevant as possible for our pupils by giving them 'real life' experiences. We'd love to hear from you!

Community Café

Once again, we would like to extend a heartfelt invitation to everyone in our local community—parents, carers, neighbours, and friends. Please feel free to drop in for a tasty treat, a hot drink, and the chance to see our wonderful school in action.

Our next Community Café will take place on **Thursday 14th May 2026**, from 9.30am to 11.00am, and will be led by one of our P7 classes.

We hope to see you there!

JUBILEE HALL PORTLETHEN

MOVIE NIGHT

First Friday of the month
At 07:00pm

FREE ENTRY

CINEMA TICKET
ADULT ONE

pop corn

Featured Film: SEE HALL NOTICEBOARD

Donations welcome: snacks available to purchase

BINGO

Jubilee Hall
Cash Bingo

10 Games for £10

Tickets on sale on the door

LAST SUNDAY OF THE MONTH
CHECK JUBILEE HALL FOR LATEST GAME INFO
LOCATION: JUBILEE HALL, PORTLETHEN

CASH PRIZES!

Fundraising for the Jubilee Hall

£1 entrance + £10 for 10 games

18+

Portlethen Financial Services

Mortgage Brokers | Financial Advisers | Later Life Lending

Unit 14 The Green, Berrymuir Road, Portlethen, Aberdeen, AB12 4UN

Telephone: 01224 784030 | info@portfs.co.uk | www.portlethenfinancial.co.uk



- *Mortgage
- * Buy to Let
- * Additional Borrowing
- * Equity Release
- * Life Insurance
- * Income Protection
- * Remortgage
- * Self-Build Mortgage
- * First Time Buyer
- * Retirement Interest Only
- * Critical Illness Cover
- * Mortgage Protection

**To arrange a review of your mortgage needs and life insurance
get in touch: email info@portfs.co.uk or call 01224 784030**

Impartial & Unbiased advice for all your mortgage and insurance needs

Your property may be repossessed if you do not keep up repayments on your mortgage

Equity Release refers to home reversion plans and lifetime mortgages. To understand the features and risks, ask for a personalised illustration

For Equity release advice we will charge a fee of £495, and we will also receive commission from the

TREAT YOUR CARPETS AND SUITE
AND HAVE THEM

ALL KLEEN

CARPET & UPHOLSTERY CLEANING
INDEPENDENTLY OWNED
& OPERATED
DOMESTIC & COMMERCIAL
Est 1995

Always using premium products for the best possible results.

All carpets pre-sprayed, sanitised/deodorised and spot and stain removal applied where and when possible.

All carpets and rugs raked or brushed for aeration and presentation

Coasters are used where and when needed.

See reviews and pics:

Google, Yel.com, Facebook
Allkleenaberdeem.co.uk

Contact us:

Tel: 07836 248022

Email: allkleen@hotmail.co.uk

Fb Messenger, WhatsApp



BON ACCORD

Chiropody



SUSAN DUNCAN
MSSCh MBChA

20 North Silver Street
Aberdeen, AB10 1RL

Home Visits and Evening
Appointments Available

Telephone 07946 507623

Registered member of the British
Chiropody and Podiatry Association



Join our team and take the first
step to your amazing new career...

- ✓ No qualifications or experience required
- ✓ Fully funded training and SVQ qualifications
- ✓ Loads of career development opportunities
- ✓ Make a real difference, every day!
- ✓ Contribute to your local community
- ✓ Vacancies currently in South Aberdeen & Shire

Cornerstone is one of Scotland's
leading social care providers,
delivering vital care and support to
people with learning disabilities,
autism and complex care needs.

Scan below to
find out more:



or visit:

[jobtrain.co.uk/
cornerstone](http://jobtrain.co.uk/cornerstone)

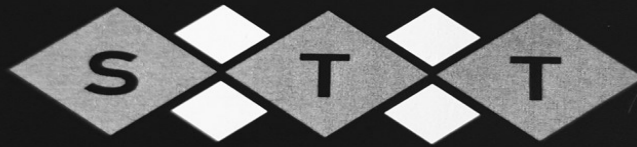


K6 KABS



**Wheelchair Access
General Taxi Runs
Contracts**

Tel 07747 200662



SCOTT TURNBULL TILING

07718 927758



Mearns and Coastal Healthy Living Network is a charity-run organisation which provides services and groups to those over the age of 50 living in Kincardine and Mearns. We have a transport, shopping and gardening service and provide a range of groups.

We can be contacted on 01561 378130 if you wish to find out more about these.

Current Groups, available to everyone over the age of 50, living in their own home:

Digital Support Sessions

Do you have your own digital device that you require support to use, bring it along to one of our sessions where we will have someone there to try and help you.

1st Thursday of the month

Portlethen Library

10.30am – 12pm

Portlethen Sunshine Club

An opportunity to try something new while meeting new people. We invite you to come along and try some crafting, playing games and to have a good blether and a cuppy. Everyone will be made to feel welcome.

Every 2 weeks – June dates are 8th and 22nd and July dates are 6th and 20th

Portlethen Community Campus – Larch Room

1.30pm – 3.00pm

Gardening Group

Do you know we are the volunteers who keep the train station in bloom?

Our group desperately needs some help to continue to do this. You don't need to be an experienced gardener. We end our sessions with a refreshment and a blether – in the winter months we still meet up either at Sally's or The Men's Shed for a cuppy.

The group meets on a Tuesday morning at 9.30am at the train station, Just bring your gardening gloves and a trowel along and help keep the station looking lovely. Get in touch if you wish to find out more. Everyone is welcome to come along.

Blue Badge parking at the Medical Centre



As many of you will have noticed, at the door to the Medical Centre are a few parking spaces dedicated to people with disabilities, specifically those in possession of the official Blue Badges.

It has come to the notice of the practice, and some patients, that some people are abusing this system by staying in the car, in some cases refusing to move despite there being an obvious need for another Blue Badge-holding patient to use the space. This is not only unacceptable, but it is against the law to use the blue badge and sit in a car to wait for another person. There are always plenty of other spaces in the car park.

The Blue Badge Scheme: Rights and Responsibilities leaflet (also available at mygov.scot) clearly states:

A Blue Badge is a card that lets you park closer to where you're going.

You can use a Blue Badge in a vehicle as:

- a driver
- a passenger
- an organisation transporting people who would qualify for a Blue Badge

Blue Badge holders are allowed to park in some places that other vehicles are not.

The driver must obey The Highway Code.

You must follow the rules when using a Blue Badge. If you do not follow the rules:

- you may get a fine
- your Blue Badge may be taken away

You must not:

- let other people use your Blue Badge if you're not with them - even if they're doing something for you like collecting shopping or medication
- **use your Blue Badge to sit in a parked vehicle and wait for another person**
- display a Blue Badge in a way that makes it unreadable from outside the vehicle
- use a Blue Badge that's expired
- use a Blue Badge if you're no longer eligible
- tamper with a Blue Badge
- make a copy of your Blue Badge

PLEASE BE RESPECTFUL OF ALL BLUE BADGE HOLDERS



Mearns FM: The Heartbeat of the Mearns is Turning Up the Volume!

Broadcasting from the heart of Portlethen, Mearns FM is more than just a radio station, it's the sound of our community in motion.

As we head into a vibrant Spring, Mearns FM is proving that local radio is alive, well, and louder than ever. We are a registered charity, a team of 20+ dedicated volunteers, and a vital lifeline for Aberdeenshire South and Aberdeen City. Whether you are tuning in on **105-107 FM**, catching us on **DAB+**, or asking **Alexa** to play Mearns FM while you have your morning coffee, we are right there with you.

New Sounds for a New Season

This May, we have been thrilled to launch two brand-new flagship programmes designed to give our listeners a voice:

- **Student Sounds Off:** Giving the next generation a platform to lead the conversation.
- **Community Showcase:** Shifting the spotlight onto the local groups and charities that make our region thrive.

From the roar of Hard Rock to the soul of Jazz, Blues, and Country, our specialist music programmes continue to offer a diverse alternative to mainstream radio.

We Need Your Feet! (The Kiltwalk 2026)

To keep the music playing and the studio lights on, we need your help. On **7th June 2026**, the Mearns FM team is taking to the Deeside Way for the **Aberdeen Kiltwalk**. As a 100% volunteer-run charity, this is our most critical fundraiser of the year.



- **Join us:** Walk with our team and represent your local station!
- **Support us:** Every penny donated via our Just Giving page goes directly toward sustaining your local radio station, keeping us on air!
<https://www.justgiving.com/charity/mearnsfm>

Your Voice, Your Station: Join the Team

Have you ever wondered what happens on the other side of the microphone? We are currently looking for fresh talent to join our broadcast family! We have prime opportunities for **Drive Time** presenters, as well as slots on **Saturday (1pm–3pm)** and **Weekday Afternoons (1pm–4pm)**.

Whether you're a seasoned DJ, a technical whiz, or just someone with a passion for the Mearns, we want to hear from you. We even host **Open Days** where you can step into the studio, meet the directors, and see the magic happen firsthand.

Support Local Business

Local businesses are the backbone of our economy, which is why our newly launched **Business Spotlight** programme is becoming so popular. For just £50, businesses can secure a one-hour dedicated showcase of their services, and if you are already an advertiser with us, this spotlight is absolutely free!

Mearns FM is your music, your station, and your community.

Tune in today, join our Kiltwalk team, or get in touch to become our next star presenter.

Contact us:

studio@mearnsfm.org.uk – new presenters, collaboration, general enquiries

events@mearnsfm.org.uk – indoor or outdoor events

sales@mearnsfm.org.uk – advertising or sponsorship

Visit: www.mearnsfm.org.uk

Maxine Smith, Secretary



mearns fm
BOOK MEARNS FM FOR YOUR EVENT!

INDOOR & OUTDOOR EVENTS COVERED WITH MUSIC, SOUND & LIVE PRESENTERS

- LIVE DJ & PRESENTERS
- PROFESSIONAL SOUND SYSTEM
- TAILORED MUSIC FOR YOUR AUDIENCE

From community events to corporate functions, we create the perfect atmosphere and keep your audience **BRINGING ENERGY TO YOUR COMMUNITY EVENTS**

BOOK YOUR DATE NOW!

events@mearnsfm.org.uk

www.mearnsfm.org.uk | 105-107FM | Stream via Radio Player app



mearns fm **BUSINESS SPOTLIGHT**

HAVE YOU BOOKED YOUR MEARNS FM *Business Spotlight* INTERVIEW YET?

- JUST **£50** will secure a 1 hour discussion about your business/services/products
- YOU GET TO **CHOOSE THE MUSIC** FOR THE SHOW!
- MAXINE SMITH WILL SHOWCASE YOUR BUSINESS TO THE MEARNS FM LISTENERS IN A WAY NO OTHER RADIO STATION CAN!

YOUR BUSINESS. OUR SPOTLIGHT.

BOOK YOUR SLOT TODAY!

EMAIL: studio@mearnsfm.org.uk CALL MAXINE: 07810 001238

P.S. IF YOU ALREADY ADVERTISE ON MEARNS FM, THE BUSINESS SPOTLIGHT IS FREE!

www.mearnsfm.org.uk | 105-107FM / DAB+ / STREAM FROM WEBSITE, ALEXA, OR RADIO GARDEN FREE APP

Emergency Phone Numbers

- Alcoholics Anonymous 0800 9177 650
- Families Anonymous: 0207 4984 680
(Offers help for those affected by
drugs abuse or related problems for
families and friends)
- Housing Helpline: 03456 081203
- Narcotics Anonymous: 07071 223 441
- NHS 24-hour medical help: 111
- Power Cut: 105
- Road Defects/Street lights not working:
03456 081205
- Samaritans: 116 123
- Social Work (Emergency): 03456 081206

LOCAL Addresses, Phone Numbers, Emails

Bourtree Hall

Bookings
E: thebourtreehall@gmail.com

Bourtree Pre-School Group

Bourtree Hall
Berrymuir Road
Tel: 01224 782472

Family Resource Centre

Portlethen Academy
Bruntland Road
Tel: 01467 537111

Fishermoss School

Berrymuir Road
Tel: 01224 472875

Franciscan Missionaries

16 Dunvegan Avenue

Hillside School

Newlands Drive
Tel: 01224 472850

Homestart

32 David Street
Stonehaven
Tel: 01569 767773

Jubilee Hall

Booking Secretary
E: Jubileehallportlethen@gmail.com

Kincardine Coastal Church of Scotland

Church Office, Portlethen
Tel: 01224 782883
E: administrator@kincardine-coastal-church.org.uk

Portlethen Academy

Bruntland Road
Tel: 01224 782174

Portlethen Christian Fellowship

Sundays 10.30am @ Jubilee Hall
E: info@portlethencf.com

Portlethen Library

Portlethen Academy
Bruntland Road
Tel: 01224 472870

Portlethen Medical Centre

Old Portlethen Road
Tel: 0345 0130720

Portlethen School

Cookston Road
Tel: 01224 472845

Post Office

Morrisons Daily
Unit 4-5
The Green
Berrymuir Road
Tel: 01224 783752

RCCG House of Salvation

Sundays 11am @ Portlethen Academy
Tel: 07877 103721, 01224 516003
E: info@houseofsalvation.org.uk

Social Work Department

Portlethen Academy
Adult Services - Tel: 01569 690532
Children's Services - Tel: 01467 537111

Swimming Pool and Academy Sports Facilities

Oak Drive
Tel: 01224 472873



Advertisers' Quick Reference



<u>ARCHITECTS</u>	Ewen Buchan	01224 969600
	Groundwater Architectural Design	01224 782035
<u>CAR VALETING SERVICE</u>		
	Abersheen Valeting	07783 191797
<u>ELECTRICIAN & ELECTRICAL CONTRACTOR</u>		
	SK Electrical	07843 236630
<u>ESTATE AGENT</u>	Balfour + Manson	01224 784855
<u>GARAGE SERVICES</u>		
	Badentoy Garage	01224 054994
	Coull Cars Ltd MOT	01224 781888
	Custom Tuning	01224 954061
	Lethen Motors Ltd MOT	01224 781158
<u>IT SPECIALIST</u>	HS IT and Networks	07847 469133
<u>LANDSCAPE GARDENER</u>		
	Bonnie Landscapes	07504 782322
<u>PAINTER & DECORATOR</u>		
	Michael Morton	07809 896151
<u>SLATER</u>	S Milne Slating Services	01224 950925
<u>SOLICITOR</u>	Balfour + Manson	01224 784855
<u>TAXIS</u>	A2B Taxis	Murray - 07525 471063
	Arden Cabs	Arnie - 07764 420839
	K6 KABS	Gordon - 07747 200662



ADVERTISING RATES

FULL PAGE (Colour)	£200.00
HALF PAGE (Colour)	£100.00
QUARTER PAGE (Colour)	£ 55.00
FULL PAGE (Black & White)	£ 90.00
HALF PAGE (Black & White)	£ 50.00
QUARTER PAGE (Black & White)	£ 25.00

ADVERTISERS' QUICK REFERENCE* £ 5.00
 *available only to those with full advertisements

Favourable comments received about work done by advertisers are
 acknowledged by a rosette in their advertisement

Note to readers:



Advertisers can only be awarded a ROSETTE if they
 are nominated by YOU.
 If you feel that they should have a Rosette, please
 email



clochandigher.editor@gmail.com

Articles

Do you have something the Community should know about?
 Do you have something of interest you would like to share?

Then what are you waiting for?

This is YOUR magazine, so just send it to:-

clochandigher.editor@gmail.com

**CLOSING DATE FOR
 THE AUTUMN EDITION IS
 1st AUGUST 2026**



Laws Tyres

www.laws-tyre.com

Tyres & Exhausts : Brakes

Alloy Repairs : TPMS Repairs

Suspension Replacement etc

MOT?

Clochandler Special*

Subject to availability at our MOT Station at Laws Tyres Altens

BOOK NOW on 01224 230750 QUOTE CLOCH24

£30

FREE

Drop off service

Loan Car Available

Tea and coffee

Wifi

CALL US NOW on

01224 230750

Altens Branch